

# CYSAR

## ANNUAL REPORT

# 2012



**The Centre for Youth  
Substance Abuse Research**

Finding Solutions, Improving Futures,  
Advocating For Young People

---

# ABOUT CYSAR

---

## *Finding Solutions, Improving Futures, Advocating for Young People*

The Centre for Youth Substance Abuse Research (CYSAR) was established in 2008 through the shared vision of the Graeme Wood Foundation and The University of Queensland's Faculty of Health Sciences. CYSAR seeks to promote the health and well-being of young people by increasing Australia's capacity to respond effectively to the harm associated with alcohol, tobacco, and other drug misuse. CYSAR aims to:

- Understand the pathways by which young people engage in substance misuse
- Be at the cutting edge of research into new and innovative ways of preventing and treating substance misuse among young people
- Make significant and tangible improvements to youth service provision
- Positively influence state and national approaches to youth substance misuse prevention and treatment through information dissemination, policy refinement and public advocacy, and
- Ensure youth have a voice and input into the research directions of the Centre.

CYSAR partnerships have made it possible to draw together the research and clinical expertise of internationally regarded Australian scholars in the field of substance use disorders. CYSAR's partner organisations are:

- Faculty of Health Sciences, The University of Queensland
- The Institute of Health and Biomedical Innovation, Queensland University of Technology
- Faculty of Social and Behavioural Sciences, The University of Queensland, and
- The Institute for Social Science Research, The University of Queensland.

*CYSAR is supported  
by a philanthropic  
contribution from  
the Graeme Wood  
Foundation*

### *the* **ENGAGEMENT**

of young people and youth health services ensures that CYSAR's research direction is responsive to the community needs.

### *Research at CYSAR focuses on generating* **KNOWLEDGE**

about the development of youth substance misuse through to the prevention and treatment of this important issue.

### **ADVOCATING**

for policy reforms to improve access to evidence-based treatment and prevention for young people.

### **DISSEMINATION**

of new findings to individuals, health services, government and the community ensures that CYSAR is making positive changes for young people and their community.

# TABLE OF CONTENTS

---

<b>Director's Report</b>	<b>4</b>
<b>Deputy Director's Report</b>	<b>5</b>
<b>CYSAR People</b>	<b>6</b>
Advisory Board	7
Staff Members	9
Staff Members' Professional Activities	11
Student Profiles	12
Honorary, Affiliate & Adjunct Staff	14
<b>Awards &amp; Honours</b>	<b>16</b>
<b>CYSAR Staff Out &amp; About</b>	<b>18</b>
<b>Advocacy &amp; Community Engagement</b>	<b>20</b>
<b>2012 Research Activities</b>	<b>21</b>
Individuals & Families	22
Schools & Communities	26
Policy & Population Research	30
<b>Publications &amp; Grants</b>	<b>34</b>



# Director's Report



## Jason Connor, UQ

CYSAR enters its fifth year of operation buoyed by strong performance in 2012. Our community-based youth treatment and prevention projects are a 'ground level' commitment to share the outcomes of our work with the community and to provide effective approaches to reduce youth substance misuse. We continue to develop improvements in information delivery and clinical interventions. Because of QUT and CYSAR's strength in health information technology, a number of youth-friendly, accessible smart phone and web-based applications are being trialled with promising results.

### Other highlights for 2012 included:

- Associate Professor Adrian Kelly was awarded an Australian Research Council (ARC) Discovery Grant to investigate how families and communities protect young children from early alcohol and tobacco use. Findings will have implications for prevention policy and program development (see p. 17).
- Dr Leanne Hides was awarded a targeted National Health and Medical Research Council (NHMRC) Mental Health Grant to examine the effectiveness of delivering brief phone interventions to 16-25 year olds who present to hospital emergency departments. This research has the potential to reduce the incidence of young Australians requiring emergency department assistance for alcohol-related injury. A second NHMRC grant led by Leanne will examine a telephone-delivered approach that provides socio-emotional skills to disengaged youth (see p. 22).
- Dr Lake-Hui Quek completed a program of research at the Mater Children's Hospital Adolescent Drug and Alcohol Withdrawal Service (ADAWS) to help clinical staff identify and address key risk factors associated with injecting drug use (see p. 28).
- Dr Angela White, assisted by our statisticians Dr Peter Baker and Dr Maria Plotnikova, undertook an independent evaluation of the Queensland State Government's 'Drink Safe Precincts' trial (see p. 33). Two technical reports examined the trial's impact over the first 14 and 18 months of implementation. Areas reviewed included police services attendances, emergency department admissions and ambulance call outs. The final report will be available in 2013.

Over half of CYSAR's academic staff now hold NHMRC or ARC Fellowships. Dr Matthew Gullo received a NHMRC Early Career Fellowship investigating the implications of impulsivity in adolescents.

CYSAR Deputy Director, Dr Leanne Hides, was awarded an ARC Future Fellowship to develop online mental health instruments for young people. A NHMRC Career Development Fellowship to investigate improvement in targeting treatment for alcohol dependence was awarded to the current CYSAR Director, and marks the conclusion of his tenure as inaugural Director.

It has been an honour to be involved in the establishment of a centre with such a talented group of individuals. CYSAR Honorary Professors Wayne Hall and John Saunders have provided invaluable guidance during this time. On behalf of CYSAR staff, I would also like to thank our Advisory Board, chaired by Professor Bruce Abernethy. The Board, with industry leaders in health, youth advocacy, government and company management, continues to provide strong and effective leadership to the Centre (see p. 7 for Board Member profiles). Professor Ross Young, Executive Director of Institute of Health and Biomedical Innovation at Queensland University of Technology, has been instrumental in guiding and developing the Centre. All have contributed to the cross-institutional success of CYSAR.

CYSAR was the vision of Graeme Wood (Graeme Wood Foundation) who generously provided core financial support to establish the Centre. He remains committed to making a difference to the lives of young people affected by substance abuse. Through The University of Queensland Endowment Fund, Graeme Wood this year has pledged a further five years of support to address this national health priority. This will occur with matching funding from The University of Queensland and Queensland University of Technology.

The Centre is well placed to make a significant and continued contribution to addiction science and the life of young Australians.



**Jason Connor**

Director, Centre for Youth Substance Abuse Research (CYSAR)  
Faculty of Health Sciences,  
The University of Queensland



# Deputy Director's Report

## *Leanne Hides, QUT*

The QUT arm of CYSAR had a successful year in 2012. Our researchers at QUT, in partnership with those at UQ, continue to build upon our key research strengths in injury surveillance, technology and the assessment and treatment of primary and comorbid substance use.

As noted in the Director's report, an Australian Research Council (ARC) Future Fellowship ensures that I can continue in my role as Deputy Director for the next 4 years. This program of research will develop and test a set of Etools aimed at enhancing the positive mental health and wellbeing of young Australians. This includes an iPhone app which targets alcohol misuse in young people, using an engaging animated character to help identify problematic alcohol use.

In 2013, QUT CYSAR will lead two National Health and Medical Research Council (NHMRC) 'Targeted Calls' for Mental Health Research grants. The project will feature a large-scale randomised controlled trial to compare the efficacy and cost-effectiveness of telephone-delivered brief interventions for reducing future alcohol use and related harm in young people (see p. 22). The project targets the 10,000 young people per month who present to emergency departments nationally, with alcohol related injuries and illnesses. This project is being conducted in partnership with the UQ arm of CYSAR. The research team includes Professors' David Kavanagh and Ross Young from QUT and Associate Professor Jason Connor and Dr Angela White from UQ. A QUT CYSAR Research Development Grant provided the pilot data for this grant.

The second NHMRC project targets young people who have disengaged or are at risk of disengaging from education, training and employment (see p. 22). Adolescence is a period of rapid physical, emotional and social growth and many young people lack the socio-emotional skills necessary to successfully negotiate through this transitional phase. This project aims to increase the social and emotional skills of disengaged youth to facilitate the resumption of education, training or employment. This will be the first clinical trial to investigate the efficacy of a telephone delivered intervention for improving the social engagement and emotional well-being of disengaged youth.

QUT CYSAR is committed to supporting high quality research. With the assistance of a QUT CYSAR Research Development Grant, Dr Kirsten McKenzie has continued to work with Dr Ruth Barker (Emergency Physician) from the Mater Hospital and Queensland Injury Surveillance Unit (QISU) to improve the quality of emergency department data on alcohol-related presentations. This project used the unique QISU database to identify and describe alcohol- and illicit drug-related injuries in young people over a 13 year period.

The second round of the IHBI CYSAR Research Development Grant Scheme resulted in the following three projects being awarded grants:

- Gamified motivation to reduce alcohol intake using an iPhone calorie counting app. Project Investigators: Neil King, Daniel Johnson, Frank Leowenich, Leanne Hides & David Kavanagh.
- Young adults' cannabis use and mental health: Identifying and quantifying gene-gene-environment risk and protective influences. Project Investigators: Melanie White & Joanne Voisey.
- Test of a new, technology assisted motivational intervention for substance misuse in first episode psychosis. Project Investigators: David Kavanagh, Jennifer Connolly, Leanne Hides, Lake-Hui Quek, Dian Tjondronegoro, Francis Dark, Angela White, Jackie Andrade and Jon May.

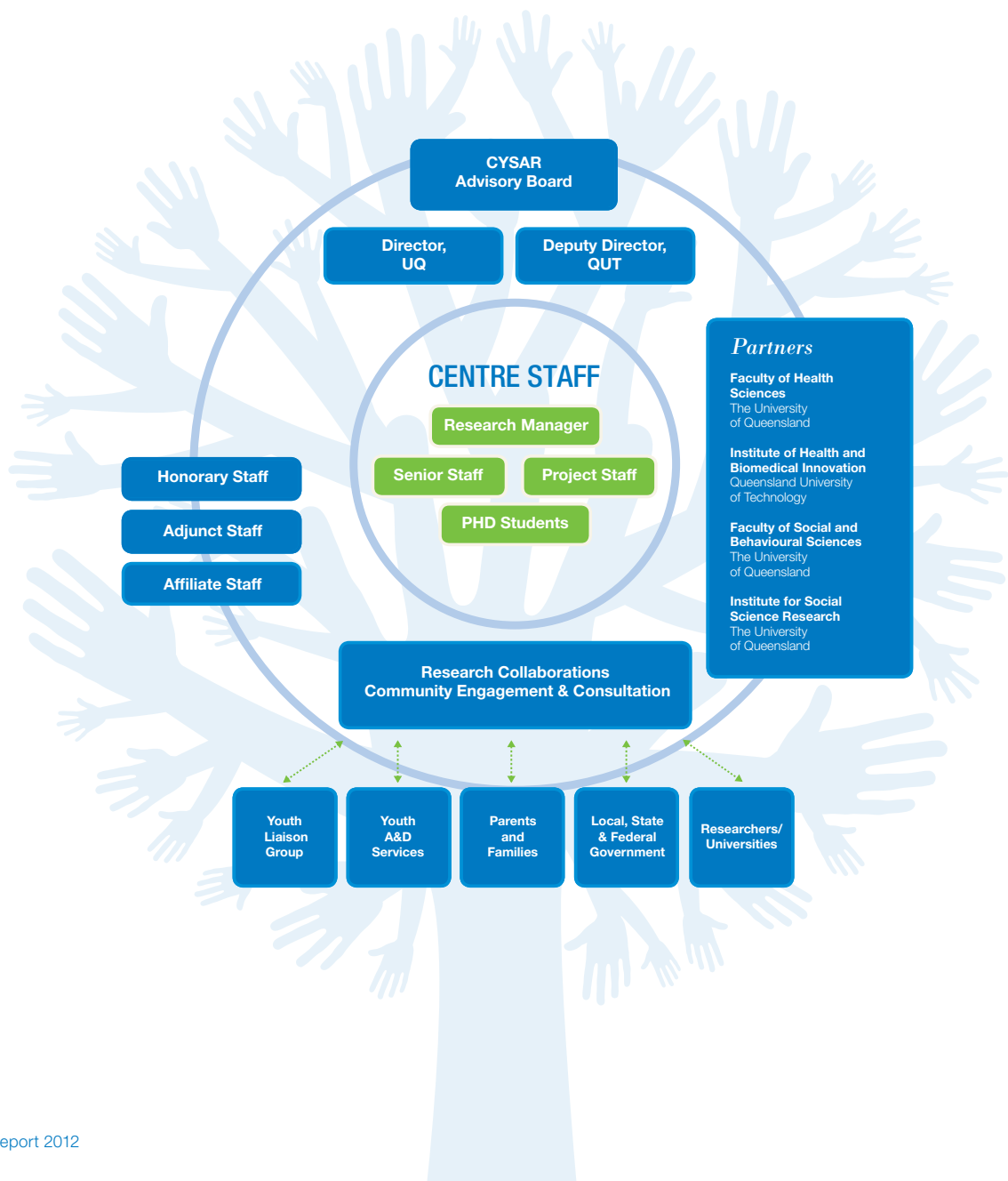
We look forward to supporting these exciting new projects in 2013!



**Leanne Hides**

Deputy Director, Centre for Youth  
Substance Abuse Research (CYSAR)  
Queensland University of Technology

# CYSAR People



## ADVISORY BOARD



### **Professor Bruce Abernethy (Chair)**

Deputy Executive Dean/Associate Dean (Research), Faculty of Health Sciences, The University of Queensland

Professor Abernethy serves dual roles as Deputy Executive Dean and as Associate Dean (Research) within the Faculty. In his roles, Professor Abernethy is responsible for strategic development and implementation of research and research higher degree initiatives and collaborations across the Faculty. He also deals with a range of issues within and beyond UQ that include capacity-building and collaborative networking, staffing appointments, resourcing and capital development.



### **Ms Carrie Fowlie**

Alcohol and Other Drug Sector Representative, Executive Officer, Alcohol Tobacco and Other Drug Association ACT (ATODA)

Ms Fowlie has held diverse roles in both the alcohol, tobacco and other drug and youth sectors in the areas of workforce development and social policy. She worked collaboratively to establish the new Australian Capital Territory (ACT) alcohol, tobacco and other drug sector peak body, for which she is now the Executive Officer. Among other appointments, she is a member of the Australian National Council on Drugs, Alcohol and other Drugs Council of Australia (ADCA) Board, and the chair of the Implementing Expanded Naloxone Availability in the ACT (I-ENAACT) Committee.



### **Associate Professor Jason Connor**

Director, CYSAR, The University of Queensland

Associate Professor Connor is Director of CYSAR and also holds appointments in the School of Medicine (UQ) and Queensland Health. Associate Professor Connor is a National Health and Medical Research Council of Australia (NHMRC) Career Development Fellow.



### **Dr Kevin Lambkin**

Director, Preventative Health, Queensland Health

Dr Lambkin has been a career Queensland public servant for 31 years. He served in both the parliamentary and executive arms of the service, including as research director of the inaugural Queensland parliamentary public accounts committee. Dr Lambkin made significant contributions to health policies and programs including the design and introduction of drug diversion and drug court programs, the expansion of the needle and syringe program, the modernisation of tobacco control legislation, and preventative health campaigns and programs. He retired from the public service in September 2012. Dr Lambkin is a founder, past president and current board member of the Caxton Legal Centre, Queensland's oldest community legal service.



### **Dr Leanne Hides\***

Deputy Director, CYSAR, Queensland University of Technology

As Deputy Director of CYSAR, Dr Hides leads the QUT arm of the Centre. She is an Australian Research Council (ARC) Future Fellowship holder and is currently leading two NHMRC projects.



### **Associate Professor Andrew Hindmoor\***

Faculty of Social and Behavioural Sciences, The University of Queensland

Associate Professor Hindmoor is the Associate Dean (Research) for the Faculty of Social and Behavioural Sciences (UQ). He teaches and researches in public policy, political economy, governance and rational choice theory.



### **Professor David Kavanagh\***

Institute of Health and Biomedical Innovation, Queensland University of Technology

Professor Kavanagh is currently a Research Capacity Building Professor and Director of Research for the School of Psychology and Counselling at QUT, and an Honorary Professor at UQ. He is a Fellow of the Australian Psychological Society and Convenor of the ePsychology Interest Group. Professor Kavanagh also sits on the editorial boards of a number of top tier journals, including *Addiction*.

# CYSAR People

## ADVISORY BOARD



### **Professor Doune Macdonald**

Head of School and Professor of Health & Physical Education, School of Human Movement Studies, The University of Queensland

Professor Macdonald's educational background is in Health and Physical Education. Her research interests and work have addressed the challenges of curriculum reform and its impact upon teachers and teaching. More recently her interests have moved outside the formal education sphere to broader questions of physical activity and young people. Professor Macdonald is a member of the Australian Council of Deans of Education, serves on the editorial boards of *Sport, Education and Society* and *Physical Education and Sport Pedagogy*, is a member of AIESEP (an International Association for Physical Education in Higher Education), and was Lead Writer for the Australian Curriculum: Health and Physical Education.



### **Professor Graham Martin**

Professor, Child and Adolescent Psychiatry, The University of Queensland, & Clinical Director, Royal Children's Hospital and Brisbane North Child and Youth Mental Health Service

Professor Martin OAM is Director of Child and Adolescent Psychiatry at UQ, and Clinical Director of the Royal Children's Hospital and Health Service District, Child and Youth Mental Health Service (CYMHS). Professor Martin has been dedicated to suicide prevention since 1987, a member of the International Association for Suicide Prevention since 1997, and a member by invitation of the International Association for Suicide Research. He has been a member of the Advisory Council Australian National Youth Suicide Prevention Strategy and Evaluation Working Group (1994-99), writing team for the Australian Suicide Prevention Strategy (2000 and 2007), National Advisory Council for Suicide Prevention (2003-8), and is a National Advisor on Suicide Prevention to the Australian Government (2009 to present).



### **Professor Lorraine Mazerolle\***

Program Director, Policing and Security, Institute for Social Science Research, The University of Queensland

Professor Mazerolle is a Research Professor in UQ's Institute for Social Science Research and an Australian Research Council Laureate Fellow. She is also the Foundation Director and a Chief Investigator in the ARC Centre of Excellence in Policing and Security (CEPS), a Chief Investigator in the Drug Policy Modeling Program, and the ISSR 'Policing and Security' Program Director. Professor Mazerolle is a Fellow of the Academy of Experimental Criminology, immediate past President of the Academy, and foundation Vice President of the American Society of Criminology Division of Experimental Criminology.



### **Associate Professor Brett McDermott**

Director, Mater Child and Youth Mental Health Service

Associate Professor McDermott is an Australian medical graduate and trained in Psychiatry and Child Psychiatry in the UK and Sydney. Current appointments include the Executive Director of the Mater Child and Youth Mental Health Service in Brisbane, Professorial Fellow at the Mater Medical Research Institute and Associate Professor at UQ. Professor McDermott is also a By-Fellow at Churchill College, Cambridge University; and a Director of the Australian national depression initiative, beyondblue.



### **Professor Ross Young\***

Executive Dean, Faculty of Health, Queensland University of Technology

Professor Young is the Executive Dean, Faculty of Health with a professional background in clinical psychology. He was Executive Director of the Institute of Health and Biomedical Innovation at QUT between 2006 and 2012. Professor Young has a visiting research appointment at the Alcohol Research Center at the University of California, Los Angeles and has maintained a part-time clinical practice at the Alcohol and Drug Unit and the Princess Alexandra Hospital. Professor Young sits on several health-related Boards, including Cancer Council Queensland and is Patron of Mental Health Carers Arafmi Queensland.

\* represents CYSAR partner organisations

## STAFF MEMBERS

---



### **Associate Professor Jason Connor, PhD, MAPS. CYSAR DIRECTOR**

Jason is a clinical and health psychologist with research interest in psychological and genetic factors contributing to addiction. He is also a National Health and Medical Research Council (NHMRC) Career Development Fellow. Recent research projects include youth substance abuse prevention and the efficacy of psychological and pharmacological treatments for alcohol dependence. His research is supported by current NHMRC and Australian Research Council (ARC) funding. Jason also holds appointments in the Schools of Medicine and Psychology (UQ) and Queensland Health.



### **Dr Leanne Hides, PhD (Clinical). CYSAR DEPUTY DIRECTOR, QUT**

Leanne is an ARC Future Fellowship holder and clinical psychologist with expertise in the assessment and treatment of primary and co-occurring substance use disorders in young people. Her main areas of research interest include the efficacy of early interventions for primary and comorbid substance misuse, including the development of web- and mobile phone-based interventions.



### **Dr Angela White, PhD, MAPS. MANAGER OF CYSAR RESEARCH**

Angela is a clinical psychologist with over 20 years of clinical experience in the area of adult and youth mental health. Angela has conducted research in a range of areas including depression, psychosis, substance use, mental illness, co-occurring mental health and substance use disorders, family/carer support, and the application of new media in substance use prevention and intervention.



### **Associate Professor Rosa Alati, PhD**

Rosa is a NHMRC Career Development Fellow with a background in Indigenous health research and the life course epidemiology of alcohol and mental health disorders. Rosa holds a concurrent appointment with the School of Population Health (UQ) and has received several fellowships to pursue her research. Rosa is a principal investigator of the Mater University Study of Pregnancy (MUSP) and other large national and international epidemiological studies. She has made significant contributions to the fields of maternal substance use and offspring outcomes and cognate aspects of developmental and life course epidemiology.



### **Dr Peter Baker, PhD**

Peter holds a joint position as Consultant Statistician for CYSAR and Senior Lecturer in Statistics at the School of Population Health (UQ). Peter is currently researching: graphical models for multivariate data in epidemiology; statistical methods for modelling trajectories of alcohol consumption in youths; analysis of longitudinal study data relating cardiovascular risks to behavioural and demographic traits; and investigating the appropriateness of statistical methods for assessing policy interventions in seasonal time series data including application to the Queensland Government Drink Safe Precincts study.



### **Mr Gary Chan, BSc(Statistics), BA(Psychology), MSc(Mathematics)**

Gary joined CYSAR in 2010 as a PhD student. Throughout 2012 he has been employed with the Centre providing statistical support across a range of projects including conducting trajectory and class analysis of large scale national datasets such as the Australian National Drug Strategy Household Survey. Gary is strongly committed to investigating the epidemiology of alcohol misuse among adolescents.



### **Dr Matthew Gullo, PhD (Clinical), MAPS**

Matthew is a NHMRC Early Career Fellow (Clinical) who conducts research on impulsivity and substance use. His research focuses on the cognitive and neuropsychological mechanisms that convey risk for substance abuse. Matthew also works clinically at the Alcohol and Drug Assessment Unit, Princess Alexandra Hospital.



### **Ms April Holman, BEd (Secondary), MHlthSc (Health Promotion)**

April is the Centre's Community Relations Officer. Her experience as a health and nutrition educator places her in a unique role to implement prevention programs for the Communities that Care (CtC) initiative. In 2012 April worked with CYSAR's Adrian Kelly and Jason Connor in collaboration with Professor John Toumbourou (Deakin University) to roll out components of CtC in Queensland.

# CYSAR People

## STAFF MEMBERS

---



### **Associate Professor Adrian Kelly, PhD, MAPS**

Adrian is a clinical psychologist with expertise in the development, prevention and treatment of youth substance abuse and related problems. His primary interest is in how family interactions and emotional climate contribute to and protect young people from alcohol and drug-related harm. Adrian is also examining how the characteristics of communities, schools and families interact to predict substance use experimentation.



### **Ms Kara Pasmore, BA (Hons)**

Kara is a Senior Research Technician for the Centre and has been assisting with the Communities that Care (CtC) initiative. Kara has an extensive background in research and has worked on projects in various areas including veteran health, blood donorship, cultural adaptation, and consumer psychology. She is currently pursuing a PhD in the area of social and developmental psychology, investigating identity development in children and adolescents.



### **Dr Maria Plotnikova, PhD**

Maria is a Consultant Statistician for CYSAR, and a Biostatistician for the School of Population Health. Her research at the Moscow State University of Economics, Statistics and Informatics (MESI) and the National Research Centre of Addiction (Russian Federation) has equipped her with extensive scientific statistical skills. Maria has published on topics addressing the societal and geographic spread and development of drug use, as well as the evaluation of its consequences for society. She is presently working on the Queensland Government Drink Safe Precincts study.



### **Dr Lake-Hui Quek, PhD (Clinical), MAPS**

Lake-Hui is a psychologist with a joint appointment at CYSAR and the Young and Well Collaborative Research Centre at QUT. Her areas of expertise are in mindfulness and the innovative use of technology to promote health and well-being in young people. Recent research projects include developing and delivering the MindFit Resilience Program to schools, investigating the role of alcohol in youth celebrations, developing mobile apps, and facilitating research within clinical services.



### **Ms Caroline Salom, BSc (Hons)**

Caroline joined the Centre having managed teams in the non-government drug and alcohol field after a long period in molecular medical research. Her expertise is in prevention, policy and program evaluation, particularly around alcohol and youth celebrations. She is keenly interested in linking research to practice improvement, working closely with communities, services and training providers. In 2012 she was the project manager of CtC for CYSAR. Caroline is also pursuing a PhD in Population Health, focusing on youth, alcohol and mental health.



### **Ms Dayna Smith, MCLinPsych, MAPS**

Dayna is a psychologist with extensive experience working with children, adolescents and families affected by trauma. In 2012 she worked on a range of projects for CYSAR focusing on the role of parents in prevention of adolescent alcohol-related harm, using mindfulness meditation to improve resilience in school-aged children and adolescents, and assisting with the CtC initiative. In addition, Dayna also coordinates the annual Higher Education Research Data Collection (HERDC) for CYSAR and maintains the website.



### **Ms Hannah Thomas, BA(Hons), BBusMan**

Hannah joined the CYSAR team in 2012, working on a number of publications with Adrian Kelly and assisting with CtC. Hannah has been involved in coordinating mentoring, leadership and personal development programs for young people, including the Young Achievers Program and Young Scholars Program at UQ, and has worked with youth from a variety of backgrounds. These experiences continue to drive Hannah's interest in mental health promotion for adolescents. In 2012, Hannah won the Dr Helen Row Zonta Memorial Prize for her research proposal on psychotic experiences and self-harm in adolescents. In 2013 Hannah will begin her PhD studies with The UQ Centre for Clinical Research (supervised by Dr James Scott and Associate Professor Jason Connor) and will continue her association with CYSAR.





## STAFF MEMBERS' PROFESSIONAL ACTIVITIES

---

### **Rosa Alati**

Member of ARIA (Association for Research between Italy and Australasia) - Queensland  
Member of Queensland Fetal Alcohol Syndrome Disorder (FASD) Scientific Research Network – The University of Queensland Centre for Clinical Research

### **Peter Baker**

International Biometric Society  
International Society for Bayesian Analysis  
Statistical Society of Australia Inc

### **Jason Connor**

Australian Psychological Society (APS)  
APS College of Clinical Psychologists  
APS College of Health Psychologists  
Australian Association for Cognitive and Behavioural Therapy  
American Association for Psychological Science  
Australian Health Practitioner Regulation Agency (APHRA) – registered psychologist and accredited supervisor  
Clinical Supervisor, Royal Australian College of Psychiatrists  
Clinical Supervisor, UQ Psychology Clinic, The University of Queensland  
Member, National Health and Medical Research Council (NHMRC) of Australia Research Translation Faculty

### **Matthew Gullo**

Australian Psychological Society (APS)  
APS College of Clinical Psychologists – Associate Member  
Australian Health Practitioner Regulation Agency (APHRA) – registered psychologist  
Australasian Professional Society on Alcohol and other Drugs (APSAD)  
Member, National Health and Medical Research Council (NHMRC) of Australia Research Translation Faculty

### **Leanne Hides**

Australian Association for Cognitive Behaviour Therapy (AACBT),  
Current National President  
Australian Health Practitioner Regulation Agency (APHRA) – registered clinical psychologist

### **Adrian Kelly**

Australian Psychological Society (APS)  
APS College of Clinical Psychologists  
Australian Health Practitioner Regulation Agency (APHRA) – registered psychologist

### **Lake-Hui Quek**

Australian Psychological Society (APS)  
Australian Health Practitioner Regulation Agency (APHRA) – registered psychologist  
APS Yoga Psychology Interest Group  
Positive Psychology Network Queensland

### **Caroline Salom**

Australian Professional Society for Alcohol and Other Drugs (APSAD)  
Alcohol and Drug Council of Australia (ADCA)  
Australian Society for Medical Research (ASMR)  
Vice-Chair, Australian Winter School Conference organising committee

### **Angela White**

Australian Psychological Society (APS)  
APS College of Clinical Psychologists  
Australian Health Practitioner Regulation Agency (APHRA) – registered psychologist  
Australian Association for Cognitive and Behavioural Therapy  
Charter Member, The International Society for Research on Internet Interventions  
Adjunct appointment, the Institute of Health and Biomedical Innovation (IHBI), Queensland University of Technology  
Clinical Supervisor, UQ Psychology Clinic, The University of Queensland

# CYSAR People

## STUDENT PROFILES

---

### **Mr Gary Chan, BSc (Statistics), BA(Psychology), MSc(Mathematics)**

Gary continues his PhD with CYSAR, working on applying modern statistical methods to understand the developmental trajectories of alcohol misuse from late childhood to late adolescence. Gary is supervised by Associate Professor Adrian Kelly (CYSAR), Associate Professor Michele Haynes (Institute for Social Sciences Research, UQ) and Professor Ross Young (Institute of Health and Biomedical Innovation, QUT).



---

### **Ms Nicole Fox, BehavSci (HonsPsych); B Bus**

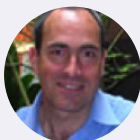
Nicole completed a placement at CYSAR as part of the Master of Applied Psychology (Health) program in 2012. She is interested in health promotion for alcohol, tobacco and other drug use in young people. Nicole interviewed young people attending Brisbane Youth Service to identify risk and protective factors associated with substance use amongst young people who are at risk of homelessness. For Nicole, the placement “was really valuable in combining research with practice. It was particularly useful to interview young people and gain practical insight into empirically established risk and protective factors”.



---

### **Ms Karen Li, BA (Hon), Associate MAPS**

Karen continues her clinical PhD with CYSAR and the School of Psychology, focusing on the dynamic relationship between parenting and adolescent alcohol use. She is supervised by Associate Professors Adrian Kelly and Jason Connor (CYSAR), Professor Kim Halford (School of Psychology, UQ) and Professor John Toumbourou (School of Psychology, Deakin University, Melbourne).



### **Introducing key research partner - John Toumbourou (Deakin University)**

CYSAR is committed to collaborating with a range of organisations involved in youth affairs, both in the community and with other universities. John Toumbourou from Deakin University heads the national Communities that Care (CtC) initiative. He collaborates with CYSAR on the Queensland arm of CtC, and also provides supervision to our PhD students, Gary and Karen- both of whom are analysing data from the Healthy Neighbourhoods dataset (the dataset that results from the CtC initiative).

Professor John Toumbourou, PhD, is the Associate Dean (Partnerships and Workplace), in the Faculty of Health and the Chair in Health Psychology within the School of Psychology at Deakin University. He is an Honorary Senior Research Fellow within the Murdoch Children's Research Institute at the Centre for Adolescent Health (Royal Children's Hospital Melbourne). He is nationally and internationally recognised for his research examining adolescent substance use and mental health. In 2010 he was appointed to the International Task Force for the Society for Prevention Research.



### Ms Therese Price

Therese completed a placement at CYSAR as part of the Summer Research Program. She is currently completing a Bachelor of Psychological Science at UQ. During her time at CYSAR, Therese has assisted Dr Matthew Gullo in data collection for his human laboratory model of adolescent impulsivity and alcohol use. She has also assisted Dr Angela White by analysing alcohol-related mobile phone apps, in order to gain an understanding of how modern technology can facilitate or intervene with alcohol use. In 2013, Therese will continue working as a research assistant for Dr Gullo and the experience she has had at CYSAR will aid her on the pathway to becoming a clinical psychologist.



### Ms Daga Rychter, BA(Hon)

Daga is a First Class Honours graduate in Psychology from Griffith University, who completed a placement at CYSAR as part of the Summer Research Program. During her placement, she created a database of CYSAR publications, and prepared literature reviews for Dr Matthew Gullo and Dr Lake-Hui Quek on the relationship between insecure attachment and youth substance abuse, and risk factors for developing polydrug use problems. She also worked with Dr Gullo preparing manuscripts for publication. Her research interests include how psychosocial variables, such as attachment style, moderate the relationship between biological risk factors and substance abuse in young people. Daga has been accepted to commence a PhD in 2013 at CYSAR under the supervision of Dr Gullo and Associate Professor Connor.



### Mr Nathan St John

Nathan completed a placement at CYSAR as part of the Summer Research Program. He is currently undertaking a Bachelor of Arts (Psychology)/ Bachelor of Social Science dual degree at UQ. Nathan has a growing interest in the role that social drinking during emerging adulthood may play in the development of later alcohol problems. In his time at CYSAR, Nathan assisted Dr Angela White and Dr Matthew Gullo on two projects: a meta-analysis of therapist-assisted online alcohol interventions and a literature review examining the mediating effect that impaired control over drinking may play between different personality types and alcohol dependence. For Nathan, "both projects have provided considerable practical research experience and skill development, which will be useful as I continue on my path to becoming a clinical and research psychologist".



CYSAR participated in UQ's Office of Undergraduate Education Summer Research Program in 2012/13, as part of our ongoing commitment to professional scholarship and undergraduate learning. The program awards students scholarships enabling them to gain research experience in their chosen discipline of study. It gives both domestic and international students the opportunity to learn and work with some of UQ's leading researchers and academics. As a result, the program has been shown to further develop students' critical thinking, analytical and research skills.

# CYSAR People

## HONORARY, AFFILIATE AND ADJUNCT STAFF

### Honorary Staff



#### **Professor Wayne Hall, PhD**

Wayne is a National Health and Medical Research Council of Australia Fellow. This fellowship is establishing a world-class research program that will focus on the ethical implications of new treatments for drug use and addiction that are emerging from cutting edge genetics and neuroscience. Wayne was formerly Director of the Office of Public Policy and Ethics at the Institute for Molecular Bioscience (UQ) and Director of the National Drug and Alcohol Research Centre at the University of New South Wales.



#### **Dr Genevieve Dingle, PhD, MAPS**

Genevieve is a Lecturer in clinical psychology in the School of Psychology (UQ) and has over a decade of experience as a clinical psychologist. Her research focus is on comorbid mental health and substance use disorders, and the psychological constructs that help explain the link between these problems (e.g. emotion dysregulation and anxiety sensitivity). Genevieve is currently developing a brief intervention targeting these underlying constructs to prevent substance use disorders in young people.



#### **Professor John B. Saunders, MD, FRACP, FAFPHM, FACHAM, FRCP**

John is a consultant physician in internal medicine and addiction medicine. He works with the World Health Organization (WHO), is the Founding and Emeritus Editor-in-Chief of the *Drug and Alcohol Review*, a Vice-President of the International Society of Addiction Medicine, a member of WHO's Expert Advisory Panel on Substance Abuse and was Co-Chair of the DSM V Substance Use Disorders Workgroup from 2003 to 2007.



#### **Dr Natalie Loxton, PhD**

Natalie is a registered psychologist and Lecturer in the School of Psychology (UQ). Her major research area is using biologically-based personality theories in examining the addiction processes involved in the progression from hazardous drinking to alcohol dependence. She is also investigating the use of targeted interventions for young people at risk of alcohol problems and for adults in treatment for alcohol dependence.



#### **Dr Louise McCuaig, PhD**

Louise currently convenes the internationally recognised Health, Sport and Physical Education Teacher Education program at the School of Human Movement Studies (UQ). The focus of her teaching and research work is the enhancement of young people's health and wellbeing through the provision of high quality health education in school settings. Louise's research addresses issues pertaining to classroom-based health education, health literacy, health education teacher education, and student transition.

### Affiliate Staff



#### **Associate Professor Annemaree Carroll, PhD**

Annemaree is based in the School of Education (UQ). Her major research interests include understanding the self-regulatory and goal setting behaviours of children and adolescents, social connectedness in children and adolescents, developmental trajectories of antisocial and aggressive behaviours, and intervention and prevention approaches for at-risk young people.

## Adjunct Staff



### **Associate Professor Gerald Feeney, FRACP, FACHAM**

Gerald is the Director of the Alcohol and Drug Assessment Unit at the Princess Alexandra Hospital, Brisbane and a Visiting Physician at the Queen Elizabeth II Hospital, Brisbane. His research work has a strong clinical focus and has influenced treatment practice in Australia and overseas, particularly in the area of medication use in alcohol dependence.



### **Ms Sophie Morson, MClInPsych**

Sophie is a Senior Psychologist with the Child and Youth Mental Health Service, Children's Health Services. Sophie builds local capacity in early intervention for mental health and co-existing substance use problems through coordinating the Minding Young Minds Early Intervention program. Sophie promotes CYSAR's work directly to local services, and informs the Centre of trends and needs of the wider community.



### **Mr John Kelly, MClInPsych**

John is a psychologist and the Team Manager of Hot House (Youth Community Team, Metro North Mental Health - Alcohol and Drug Service, Queensland Health) - a youth alcohol and drug counselling service. John is also a sessional academic with the School of Counselling and Psychology, QUT. John has over 10 years experience working in the youth alcohol and other drug sector, spanning clinical interventions, research, program development and education and training.



#### **Some of the CYSAR Team:**

Front row (L-R): David Kavanagh, Doune Macdonald, Leanne Hides, Ross Young, Jason Connor

Back row (L-R): Genevieve Dingle, Lake-Hui Quek, Maria Plotnikova, Matthew Gullo, Dayna Smith, Gary Chan, Angela White, Natalie Loxton, Adrian Kelly

# Awards & Honours

2012 proved to be a highly successful year for CYSAR, with the National Health and Medical Research Council of Australia (NHMRC) and the Australian Research Council (ARC) awarding People Support Fellowships to four staff. These prestigious fellowships enable CYSAR to continue to conduct high quality research.

## **Rosa Alati**

Rosa's new NHMRC Career Development Fellowship (Level 2) will build on a program of research focusing on the life course epidemiology of alcohol disorders, developed during her previous NHMRC Career Development Fellowship (Level 1). Rosa aims to expand her research program to investigate how genetic variations influence these alcohol use disorders over the life course of individuals, over and above biological and environmental effects. She will also explore causal factors leading to mental health risk and further the evidence base on the developmental origin of alcohol and mental health problems.

## **Jason Connor**

Jason was awarded a NHMRC Career Development Fellowship (Level 2, Clinical). His program of research is designed to improve treatment outcomes by more effectively targeting patient-specific needs. Jason has drawn together his research strengths in psychological-based treatments, addiction genetics, pharmacology and information technology to develop a cutting edge model for identifying patient characteristics that will respond more effectively to different treatment approaches. A randomised controlled trial based at the Alcohol and Drug Assessment Unit, Princess Alexandra Hospital will assess the effectiveness of this new approach. Research colleagues for this project include Associate Professor Gerald Feeney, Professor Ross Young and Dr Matthew Gullo.

## **Matthew Gullo**

Matthew was awarded a NHMRC Early Career Fellowship (TSP2, Clinical). During the tenure of the fellowship, Matthew will develop the first human laboratory model of adolescent impulsivity and alcohol use for translational research purposes. The model will allow for new psychosocial treatments to be tested in a cost-effective manner, whilst simultaneously elucidating their mechanism of action. Model development is now complete and the results of pilot testing are very encouraging.

## **Leanne Hides**

Leanne Hides was awarded a prestigious ARC Future Fellowship to promote the positive mental health and wellbeing of young Australians. Her project tests an innovative multidimensional model of positive mental health and mental illness in young Australians. It will also determine if the application of this model to the development of six positive mental health Etools (mobile apps, websites) improves the emotional, psychological and social wellbeing of young people. This Future Fellowship research program will be delivered as part of the Young and Well Cooperative Research Centre (Young and Well CRC), lead by Inspire Australia.



*CYSAR staff members have been on the winning team for two Australian Research Council (ARC) Discovery Projects Grants. The aim of the ARC grant scheme is to “support excellent basic and applied research by individuals and teams” (ARC).*

**What role can communities and families play in healthy developmental transitions for very young adolescents and prevention of adolescent alcohol use?**

Awarded in 2012, a project led by Adrian Kelly (other investigators Jason Connor, Ross Young and Peter Baker) will examine how families promote and impede alcohol and tobacco risks during puberty and transitions to high school, and examine how vulnerable communities and drinking cultures impact on parents' capacity to support their children through major developmental changes. In Australia, alcohol and tobacco use commonly start during very early adolescence, and entrenchment of alcohol and tobacco use at young ages leads to major injury and disease burdens for Australia. Australia is in need of prevention programs that move beyond generic school education to address broader social risks and developmental vulnerabilities. This project will yield a framework for this next generation of prevention science.

**Can mobile phone apps change young women's drinking behaviour?**

A project aimed at using mobile phone technology to influence young women's responsible drinking behaviour has resulted in collaboration between CYSAR staff (Angela White and Jason Connor) and researchers from UQ (Josephine Previte), QUT (Judy Drennan, David Kavanagh, Dian Tjondronegoro) and Griffith University (Marie-Louise Fry). The project introduces an innovative social marketing strategy supported by state-of-the-art mobile phone apps to provide evidence about the effectiveness of such apps in facilitating behaviour change. Project outcomes will extend our understanding of young women's alcohol drinking experiences and inform social marketing practice and public policy related to alcohol consumption. Critically, the intervention provides a means of reducing problem drinking behaviour.



Award winners: Angela White, Matthew Gullo, Ross Young, Jason Connor, Leanne Hides, David Kavanagh, and Adrian Kelly.  
Absent: Rosa Alati

## CYSAR STAFF OUT AND ABOUT

### Walk on the Wildside Symposium – May 2012, Brisbane

This one-day symposium examined substance use and society, featuring both researchers and health professionals working in the alcohol and other drug sector. Angela White and Lake-Hui Quek presented research findings about mobile apps (see p. 25) and the 'Choices' program (see p. 29).



### The Research Society on Alcoholism Conference – June 2012, San Francisco

This annual conference is regarded as the leading international meeting for scientists and health professionals to promote research that can make a difference in the prevention and treatment of alcoholism. Jason Connor discussed two research studies: the first focusing on the relationship between school connectedness and the development of alcohol use in early adolescence; and the second examining the cognitive and psychosocial impact of liver transplant on patients with alcoholic-liver disease.



### Australian Psychological Society ePsychology Conference – August 2012, Brisbane

This was the first workshop and conference for the Australian Psychological Society's ePsychology Interest Group (chaired by David Kavanagh, QUT). It brought together research on the application of a range of technological devices to psychological intervention. Angela White presented on the emerging field of mobile phone apps and whether they can be used to track and moderate alcohol use (see p. 25).



### Australasian Professional Society on Alcohol and other Drugs Scientific Conference – November 2012, Melbourne

APSAD's 2012 conference focused on new treatments, prevention and policy, with the theme of Culture of Change. Leanne Hides chaired a symposium on brief interventions for substance misuse, and Lake-Hui Quek and Gary Chan presented research findings in relation to polydrug use by young Australians (see p 32) and longitudinal research into the social influences that affect adolescent alcohol use (see p 30).



### The 4th International Conference on Life Skills Education – December 2012, Mumbai

Adrian Kelly presented his research and explored new collaborations with colleagues in Mumbai and Melbourne. The research will yield cross-cultural comparisons on the extent of substance use, and the sorts of issues that are related to adolescent problems across the two countries. The conference itself focused on strength-based approaches to health and well-being, including presentations from academics and government officials across India. Adrian presented his research as part of an invited symposium, involving colleagues from the International Youth Development Study and the Healthy Neighbourhoods Study.



### Visiting Professor, Institute of Advances Studies, Alma Mater Studiorum, University of Bologna – September 2012

Rosa Alati won a competitive professorial Fellowship at one of the oldest universities in the world - the University of Bologna, Italy (founded 1088). The main aim of the fellowship was to lead a team of Italian epidemiologists in the analysis of birth cohort data. As part of this fellowship Rosa was invited to present two lectures to report her findings on maternal substance use in pregnancy and adverse outcomes in offspring (expenses were covered by the Universities of Bologna and Turin respectively). The research behind these lectures comes from the longitudinal Mater University Study of Pregnancy (MUSP) project and the Avon Longitudinal Study of Parents And Children (ALSPAC), of which Rosa is a principal investigator.



### ResTeach, The University of Queensland

ResTeach, or Research Teaching, is a University of Queensland initiative that provides resources for researchers to engage with undergraduate and graduate students. It develops a strong connection with future health professionals and provides an avenue to instill the importance of integrating evidence-based research into practice. In 2012, CYSAR staff continued to support this program by developing and delivering student lectures and workshops on a range of topics including adolescent development; assessment, diagnosis and treatment of substance use disorders; and motivational interviewing to enhance positive health behaviours.



Karen with the research team at the Social Development Research Group, Seattle

## Jetting off to Washington for the Trans-Pacific Fellowship

CYSAR PhD student Karen Li was awarded a Trans-Pacific Fellowship which enabled her to spend three months in 2012 at the Social Developmental Research Group (SDRG), University of Washington (Seattle). This is one of the leading research centres in the world specialising in the wellbeing of young people with over 400 articles, books and monographs produced.

This opportunity enabled Karen to receive world class feedback for her PhD dissertation from esteemed academics including Professor Richard Catalano, Director of SDRG. Karen was able to finalise important results regarding the bidirectional influence of family factors and adolescent alcohol use. Further to this, Karen was able to gain experience in the Communities that Care (CtC) prevention model and other large longitudinal studies (including the Community Youth Development Study, Raising Healthy Children project, and Seattle Social Development Project).

# ADVOCACY AND COMMUNITY ENGAGEMENT

---

**CYSAR is active in a number of organisations that advocate for young people.**

## **Australian National Council on Drugs Reference Group**

Despite problematic alcohol and other drug use by young people being a significant concern to the community, young people's opinions and ideas have rarely shaped initiatives aimed at reducing the harms. The Australian National Council on Drugs (ANCD) has commissioned the Drug Policy Modelling Program (DPMP) to undertake research in this area. CYSAR is a member of the reference group providing advice on this project to DPMP.

The project utilises an online survey to collect data from young people. The questions refer to the likely consequences of alcohol and drug use, attitudes towards drug laws (legalisation/ decriminalisation), and a range of different interventions such as treatment and education. Respondents are also asked which sources of information about drugs they prefer, and what should be done about new and emerging substances. Throughout 2012, over 2,000 young people were surveyed. Data is currently being analysed, and the final report will be completed in 2013.

## **National Alliance to Reduce Harm from Alcohol**

CYSAR is a member of the National Alliance for Action on Alcohol (NAAA), with Professor Wayne Hall acting as our representative. This coalition of health and community organisations is committed to reducing alcohol-related harm in Australia. Currently comprising over 70 key health and research organisations with an interest in alcohol and public health, the formation of NAAA in 2009 represents the first time such a broad-based alliance has come together to pool their collective expertise around what needs to be done to address Australia's drinking problems.

NAAA aims to put forward evidence-based solutions with a strong emphasis on action. Recognising that there is no single solution, NAAA has focused on alcohol pricing and taxation, alcohol marketing and promotion, and alcohol availability as its three priority areas for action. As part of NAAA, member organisations have both lobbied for a comprehensive approach to alcohol and been active in pressing for a range of specific measures. NAAA works primarily in the policy arena as a network with an enabling and supporting role to address and bring about cultural change that will reduce alcohol harms and improve the health of Australians.

## **Resilience Partnership**

CYSAR continues its role in the Resilience Partnership, a collaborative project between Brisbane City Council, Queensland Health's Child and Youth Mental Health Service (CYMHS), and other youth service providers in Brisbane. The Resilience Partnership is committed to supporting youth-led and community-based initiatives that build resilience and connectedness for Brisbane's young people, with a focus on physical fitness, mental health, nutrition and emotional well-being. This is achieved through assisting CYMHS clients to more readily access youth programs and facilities, and training and supporting young people to implement peer-to-peer mental health promotion and illness prevention projects. In addition, the Resilience Partnership recognises that training front-line Council staff and youth workers in other government and community organisations in youth mental health first-aid, health promotion, illness prevention and referral pathways for early intervention is essential to ensure the ongoing health and resilience of Brisbane's young people.

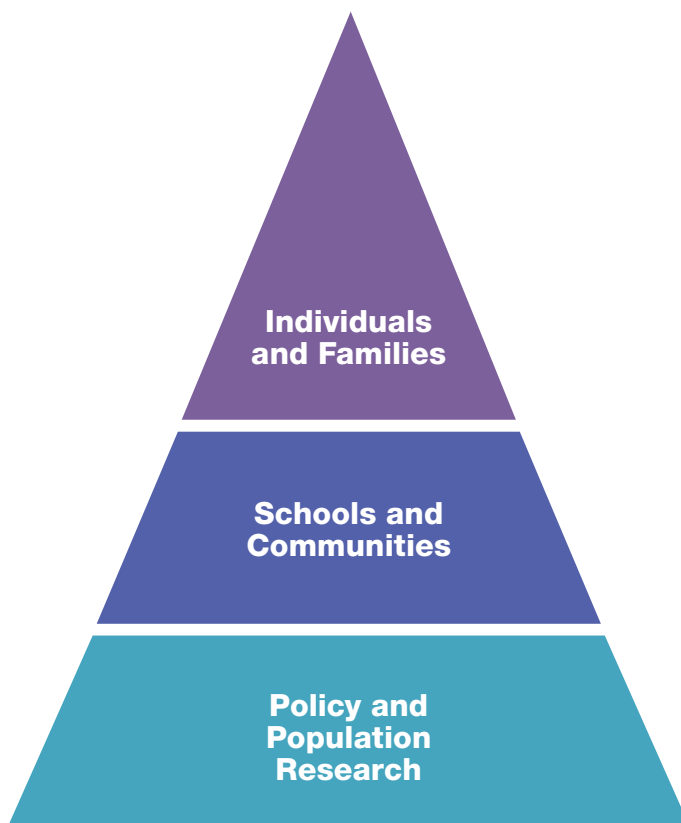
## **Youth Affairs Network Qld**

In 2012 CYSAR became a member of Youth Affairs Network QLD (YANQ) and was represented at meetings by Angela White. YANQ is the peak community youth affairs body for Queensland, representing individuals and organisations from the youth sector. It advocates on behalf of young people in Queensland, especially disadvantaged young people, to government and the community.

YANQ aims to connect people and organisations that have a focus on youth affairs, provide input into policy development, enhance the professional development of the youth sector, undertake campaigns and lobbying, and initiate research projects.



# CYSAR Asks Important Research Questions in 2012



CYSAR research projects are strategically targeted at different levels of interventions, from supporting individuals and families who are in need of help, working with schools and communities in a prevention framework, and to a broader level of policy and population research to enhance our current knowledge of youth substance use.

# Individuals & Families

CYSAR aims to improve the health and well-being of young people by answering a wide range of research questions. A key priority for CYSAR is making a difference for individuals and families by addressing risky drinking and the use of other substances.

## Can brief telephone intervention help reduce future alcohol-related harm in young people accessing hospital emergency departments?

Alcohol is a major preventable cause of injury, disability and death in young people and costs \$15 billion annually. Nationally, 10,000 young Australians present to emergency departments with alcohol-related injuries and illnesses each month. Much of this adversity could be prevented if more young people had access to effective brief interventions (BIs) for alcohol use. Telephone-delivered BIs provide an innovative, youth friendly and accessible way of delivering treatment to the 97% of young Australians with mobile phones.

For the past 24 months, Dr Leanne Hides has been working with the Drug and Alcohol Brief Intervention Team (DABIT) at the Royal Brisbane and Women's Hospital (RBWH) to improve access to BIs for reducing the risk of future alcohol misuse and related harm with the assistance of a small internal QUT grant (\$14k)

Based on this pilot data, CYSAR QUT was successful in obtaining funding from a NHMRC Targeted Call for Mental Health Research to conduct a large scale randomised controlled trial to compare the efficacy and cost-effectiveness of telephone-delivered BIs for reducing future alcohol use and related harm in young people. 390 young people presenting to the RBWH emergency department with alcohol related injuries and illnesses will be randomized to (i) 2 sessions of standard Motivational Interviewing; (ii) 2 sessions of a new Personality-targeted BI or (iii) a 1-session Assessment Feedback/Information only control. Participants are reassessed at 1, 3, 6 and 12 months to evaluate impacts on alcohol use and related problems. The randomised controlled trial will commence in April 2013.

Phase II of this project will ensure the sustainability of the project by developing clinical guidelines and a training/supervision package (based on the most effective BI), suitable for a broad range of health professionals to deliver the BI to emergency departments (EDs) nationally (e.g., through hospital alcohol and other drug [AOD] services, mental health/consultation liaison services or the development of partnerships with local youth AOD, mental health or primary care services). The impact of the implementation of the training and supervision program on ED workers skills and confidence will be determined.

**CYSAR Staff:** Leanne Hides, Jason Connor, Angela White  
**Collaborators:** David Kavanagh (QUT), Mark Daglish (UQ), Susan Cotton (University of Melbourne), Jan Barendregt (UQ), Ross Young (QUT)

## Telephone-delivered social wellbeing interventions: Can this approach assist rural, disengaged youth?

Adolescence is a period of rapid physical, emotional and social growth. Young people are faced with significant developmental challenges including the establishment of a stable identity, mastery of personal relationships and the achievement of major educational and vocational goals. Many young people lack the socio-emotional skills necessary to successfully negotiate the transition through adolescence, and are at increased risk of disengaging from education, family and community. Once disengaged, youth are at risk of a range of adverse outcomes such as substance abuse and reduced social and community participation in young adulthood and beyond. Much of this social disadvantage could be avoided if disengaged youth had access to effective prevention and early intervention programs.

Dr Leanne Hides has been working with Dr Helen Stain (Durham University) and Professor Amanda Baker (University of Newcastle) to address these issues with the assistance of funding from a Rotary Mental Health and NSW Health grants.

CYSAR QUT was successful in obtaining a NHMRC Targeted Call for Mental Health Research Grant to conduct the first clinical trial to investigate the efficacy of a telephone-delivered intervention for improving the social engagement and emotional well-being of disengaged rural and urban youth. 294 youth aged 12-25 years will be randomised to receive (i) 8 sessions of Social Well-being and Engaged Living intervention (SWEL), (ii) 8 sessions of Befriending, or (iii) Single Session Psycho-Education. The project will also engage with Aboriginal communities through consultation and collaboration; employment and training of Aboriginal youth liaison officers; and consultation, liaison and education with Aboriginal key workers in the community for referral of disengaged youth.

This project is being conducted in partnership with Youth Connections and Boystown/Kids Helpline. Targeting the social and emotional skills of adolescents will facilitate the resumption of education, training or employment and enhance the social inclusion of disengaged youth. This clinical trial will increase access to effective early intervention for disengaged urban and rural youth to improve the mental health and wellbeing of all young Australians.

**CYSAR Staff:** Leanne Hides  
**Collaborators:** Helen Stain (Durham University), Amanda Baker (University of Newcastle), Christopher Jackson (University of Birmingham), Rhoshel Lenroot (University of NSW), Georgie Paulik (WA Department of Health), Patrick McElduff (University of Newcastle), Luke Wolfenden (Hunter New England Local Health Network)



# Individuals & Families

## Does personality predict university college students' drinking?

CYSAR affiliate staff from the School of Psychology, Dr Natalie Loxton and Dr Genevieve Dingle, have been working with residential colleges located within The University of Queensland to monitor drinking patterns of students over the first semester of their university degrees. Personality traits that have historically been found to increase the risk of hazardous drinking in adolescence were also examined as predictors of hazardous levels of drinking. This study combined Dr Loxton's research on personality and addiction with Dr Dingle's research on avenues for intervention in early adulthood drinking.

Previous research in this area has typically focussed on predicting the onset of drinking in early adolescence. In this project, personality was investigated as predicting drinking frequency and quantity during a time period in which there are many demands and pressures that can affect young adults' drinking behaviour - their first six months of living away from home and starting university.

Like their non-college peers, the students drank at potentially hazardous levels during the first week of university entry (known as O Week) with a marked reduction in drinking during the semester. Despite a multitude of influences on drinking behaviour, having an impulsive personality remained a key unique predictor of those students who drank more before university admission as well as during the O week celebrations. Impulsive students also maintained a higher level of drinking and were less likely to moderate their drinking during the semester. These initial findings further reinforce earlier research findings in which personality traits, like impulsivity, greatly increase the risk of substance abuse. Knowing the characteristics of high risk students has important implications as it enables targeted early intervention and prevention programmes.

**CYSAR Affiliate Staff: Genevieve Dingle, Natalie Loxton**

## Can a brief parenting program help prevent adolescent alcohol-related harm?

Project SHIELD has been developed based on research findings showing that parents can play an important protective role with respect to teenage alcohol use. Funded by a grant from the National Health and Medical Research Council of Australia (NHMRC), Project SHIELD investigates the efficacy of a brief parenting program aimed at empowering parents to minimise adolescent alcohol-related harm. It focuses on practical strategies that parents can use to both delay the onset of teenage alcohol use, as well as reduce the risks associated with teenage drinking.

Project SHIELD continued to recruit parents in 2012, offering both telephone counselling and home visits with a registered psychologist. When recruitment closed in December 2012, over 200 parents had registered for the program.

The program attracted interest from families from a range of socioeconomic backgrounds, and parents with diverse levels of concern for their adolescents (those showing very early risks and those displaying clear indicators of future alcohol and other drug problems).

Parents are contacted for a period of 2 years after the initial intervention session. These follow-up telephone interviews assess whether the program has been useful in delaying the onset of alcohol use and reducing risks associated with drinking if the teenager starts drinking. Parents will continue to be contacted for follow-up in 2013.

**CYSAR Staff: Adrian Kelly, Dayna Smith, Lauren Rose (2009-2010).**

**Collaborators: Robert McMahon, Annemaree Carroll, and Michelle Haynes**





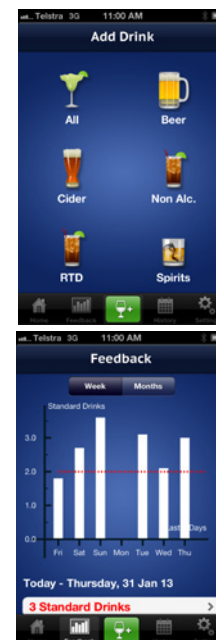
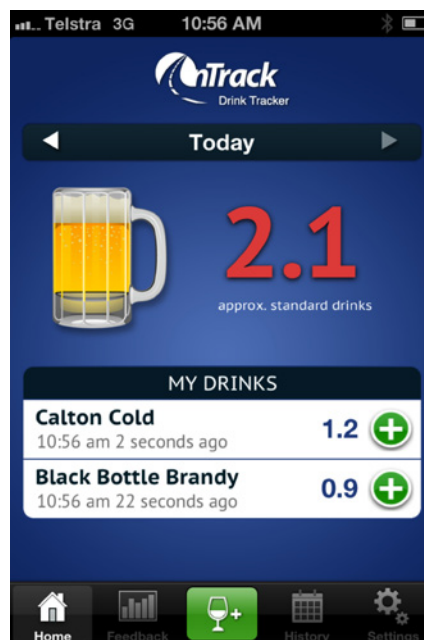
## What role can mobile phone apps play in helping young people control their drinking?

It is challenging to engage young risky drinkers via traditional intervention approaches. The emergence of smart phones offers an unprecedented portable connectivity that allows individuals to gain access to information, support and assistance.

CYSAR, in partnership with IHBI (QUT), have been developing a drink monitoring smart phone application (the OnTrack app). This approach harnesses emerging mobile and wireless technology to overcome time and geographic constraints, so that monitoring, information and advice are available directly to the young person as they are making decisions about drinking.

2012 has seen the continued refinement of the OnTrack app, following survey and focus group feedback, progressing to field and end user research trials. The OnTrack app will soon be available at no cost through iTunes.

**CYSAR Staff:** Angela White, Leanne Hides, Jason Connor.  
**Collaborators:** David Kavanagh, Dian Tjondronegoro, Desmond Koh, Steven Edge, Judy Drennan, Zachary Fitz-Walter, Daniel Johnson



# Schools & Communities

## Engaging Young People

A key aim of CYSAR is to ensure that young people can actively and meaningfully contribute to the research directions of the Centre. CYSAR continues to develop a program of community engagement with young people, schools, and the Queensland-based youth sector.

### Does mindfulness improve resilience in school students?

CYSAR is leading the development and evaluation of a mindfulness program for schools based on the current evidence-base and observation of mindfulness practices at Toogoolawa School. MindFit Resilience Program (MindFit), funded by John Fitzgerald from Toogoolawa School, is a mindfulness-based program aimed at improving students' learning experiences and promoting resilience. MindFit helps students to develop moment-by-moment awareness of their body sensations, breath, thoughts and feelings. Students are encouraged to attend to the present moment with an attitude of curiosity and openness, which can help to increase their ability to respond with thoughtful action rather than reacting to situations without thinking of the possible consequences.

The past decade has seen a significant increase in mindfulness integrated within clinical practices to enhance health and well-being (e.g. Mindfulness-Based Stress Reduction, Mindfulness-Based Cognitive Therapy, Dialectical Behaviour Therapy). Preliminary research provides support for the benefits and feasibility of mindfulness-based interventions for both adults and young people; however, the research about mindfulness-based approaches with children and adolescents is still in its infancy.

The primary aim of this pilot study is to examine the effectiveness of a school-based mindfulness program on improving students' mindfulness, learning experiences, resilience and mental health. These factors are important protective factors for adolescent substance use.

**CYSAR Staff:** Lake-Hui Quek, Dayna Smith, Jason Connor

**Collaborators:** Gerry Moloney, Sue Farmer, Dr Ron Farmer, John Fitzgerald (Toogoolawa School)



### Our research partners – Toogoolawa School

CYSAR has partnered with Toogoolawa School on the mindfulness project. Toogoolawa School is an independent school for boys aged 9-14 years who have dropped out of, or are no longer welcome in, mainstream schooling. Toogoolawa is unique in its daily practice of mindfulness with staff and students, as well as the Human Values Education model that is central to its ethos.

Observations and focus groups with Toogoolawa School staff were central in developing the MindFit Resilience Program and applying it to mainstream educational contexts.

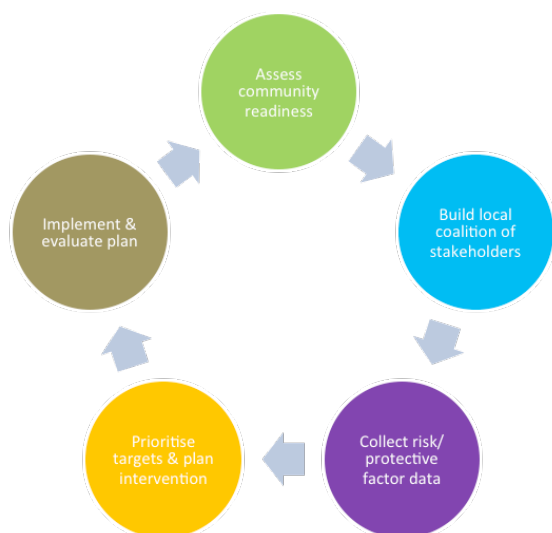
## Communities That Care (CtC) – Engaging communities, improving futures

During 2012, CYSAR expanded its collaboration with the Centre for Adolescent Health at the Murdoch Children's Research Institute (Royal Melbourne Hospital) and Deakin University. In particular, the collaboration focused on a national trial of the Communities that Care (CtC) program, targeting prevention of risk factors for youth substance use.

### What is Communities that Care?

Communities that Care (CtC) is a long-term community planning process aimed at preventing a range of health and social problems including alcohol and drug abuse, violence and crime, school failure and community disengagement. It is designed to build community capacity to plan and deliver effective child and adolescent health promotion and community prevention, through collaboration between researchers and community members.

### The Communities that Care Model

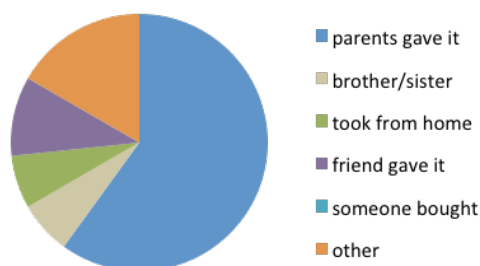


(adapted from Catalano's (2009) presentation Communities that Care: Using the Research Base for Prevention Science to Promote Community Well Being)

A Collaboration and Industry Engagement Fund (CIEF) grant from UQ in late 2011 enabled CYSAR to mobilise components of the CtC methodology in Queensland, and engage with Queensland communities involved in John Toumbourou's national ARC-funded project. In Redcliffe, Woodridge/Kingston and Gold Coast communities, we formed links with local interagency networks and engaged directly with local schools.

These community networks helped us to collect new data on risk and protective factors for young people at schools and to gather information on the activity and effectiveness of current prevention work from local stakeholders. As well as generating community specific data, we have been able to compare each location to Australian norms.

### An example of some of the community-level findings: How Year 8 students access alcohol



Twenty reports have been produced for individual schools and community stakeholders to ensure the data collected is 'put to work' back in the communities. At local CtC forums, hosted in conjunction with each location's major youth interagency networks, we then used this information to workshop starter projects to address some of the risk factors identified in each area and leverage local strengths. This has included a social marketing campaign to help parents understand their role in reducing the risks of alcohol for young adolescents, which will also involve schools and local support organisations. In conjunction with this, detailed research reports generated from the school-based data have been circulated through the local networks to support funding applications and to advocate via peak bodies for local service supports.

**CYSAR Staff:** Adrian Kelly, Caroline Salom, April Holman, Dayna Smith, Angela White, Jason Connor, Rosa Alati, Lake-Hui Quek, Kara Pasmore, Hannah Thomas.

**Collaborators:** John Toumbourou, Bosco Rowland (Deakin University), Peter Kremer (University of Melbourne), Joanne Williams, Rachel Smith, Rachel Leung, Amber Osborn (Murdoch Children's Research Institute), Eva Leslie (Flinders University), Sheryl Hemphill (Australian Catholic University)

# Schools & Communities

## Engaging Young People

### Health service utilisation: How can research help practice?

In 2012, CYSAR has continued to strengthen its partnerships with youth substance use service providers. One of our key collaborations was with the Mater Child and Youth Mental Health Service's Adolescent Drug and Alcohol Withdrawal Service (ADAWS). This Queensland-wide service provides a residential program for young people aged 13-18 who have a problem with substance use and wish to stop. The ADAWS team consists of a clinical nurse, youth workers and a visiting doctor who all provide support for the young person as they withdraw. A relapse prevention program is also provided to assist the young person to identify alternate choices to substance use.

CYSAR's collaboration with ADAWS focused on analysing existing data to provide service utilisation feedback to the service. Additionally, the partnership has resulted in research identifying the risk factors and service utilisation for young people who inject drugs. High rates of injecting drug use among treatment seeking adolescents present a significant issue to be addressed in the context of policy and service development. Early identification of those at risk of injecting drug use along with assertive outreach is critical to mediate the drug use trajectory and resultant harm.

**CYSAR Staff:** *Lake-Hui Quek, Angela White, Jason Connor.*

**Collaborators:** *Brett McDermott, William Bor, Erica Lee, Amanda Tilse, Ann Rushton, Grant Christie (Alcohol and Drug Withdrawal Service – Mater Children's Hospital).*

### Substance use profiles of Brisbane Youth Service clients: Who uses what?

Another collaboration CYSAR has with the youth sector is with Brisbane Youth Service (BYS). BYS is a community-based organisation that has been working with homeless or at-risk young people aged 12-25 years for 35 years. This service provides long-term assistance to help young people and offers a range of services from immediate basic needs to intensive personal support. The BYS team consists of volunteers, specialised youth workers, doctors, nurses and mental health workers. These staff "assist homeless and at-risk youth in any way, shape or form" (BYS).

Consistent with other research about homelessness, BYS identified that a significant problem for their at-risk clients was substance use. The aim of the BYS partnership with CYSAR was to gather more information about substance use to enable the service to better meet the needs of young people. Dr Lake-Hui Quek worked closely with BYS to refine its annual alcohol and other drug survey tool and developed a database to facilitate data collection. These data will assist the service in applying for funding to develop programs in the future. CYSAR Student Nicole Fox assisted with trialling the database, using it to interview teenagers accessing the service.

**CYSAR Staff:** *Lake-Hui Quek, Angela White*

**Collaborators:** *Laura Christie, Phil Smith (BYS)*





## Funding win for Schoolies prevention program

In 2012, CYSAR's evaluation of the North Queensland 'Choices' education program assisted the 'Choices' Committee to secure a new source of ongoing funding to continue to deliver the program. Without this new source of secure funding, 'Choices' would not have been able to continue.

CYSAR has been working with the North Queensland 'Choices' Committee since 2010 to evaluate the impact of their applied theatre prevention program in reducing the risk of drinking and other problem behaviours during Schoolies celebrations. Developed and performed by the Central Queensland Conservatorium of Music (CQCM), in partnership with government and non-government services (alcohol and drug, sexual health, police, ambulance, transport), 'Choices' delivers a series of safety messages embedded within an interactive and entertaining drama presentation. CYSAR's evaluation demonstrated the effectiveness of 'Choices' in reducing risky behaviour (Quek et al., 2012).

**CYSAR Staff:** Lake-Hui Quek, Angela White, Jason Connor

**Collaborators:** Christine Low (Alcohol, Tobacco, and Other Drugs Services, Mackay), Judith Brown (Central Queensland Conservatorium of Music), Sargent Nigel Dalton (Mackay Crime Prevention Unit), and Debbie Dow (Community Services, Sport and Recreation, Department of Communities, Mackay)



# Policy & Population Research

## The Bigger Picture

The Centre has a strong record of achievement in applying large-scale population datasets to examine major public health and policy issues relating to substance misuse. Collaborating with Australian and international researchers, CYSAR aims to increase the knowledge base on substance misuse and young people, including risk factors, trajectories, and impact on mental health. This body of research is used to evaluate and inform policy.

### What is the relationship between puberty, family relationships and adolescent alcohol use?

PhD Students Karen Li and Gary Chan have been working with Adrian Kelly to examine the question of whether stage of puberty and relative pubertal timing is associated with alcohol use in very young adolescents (aged 10-13 years), and whether this association is further affected by family relationship quality. This age is of particular interest because it is when alcohol use often begins and also when puberty typically starts.

The CYSAR trio have used data from the Australian Healthy Neighbourhoods dataset that includes over 7500 Australian youth. Previous research with older adolescents has suggested that the age at which adolescents enter puberty affects their likelihood of early alcohol initiation, with early maturing and late maturing teens being at greater risk. In addition, other studies have identified that family conflict plays a role in adolescent alcohol use, with girls being more greatly affected than boys. Family closeness has also previously been found to be a protective factor for alcohol use in the early stages of puberty.

The current research is unique in examining the interplay between puberty (stage and relative pubertal timing), family relationship quality (parent-adolescent emotional closeness and family conflict), and alcohol use in such a young adolescent sample.

Results indicate that pubertal stage, rather than timing, was a significant predictor of concurrent alcohol use, with adolescents in the advanced stage of pubertal development being more likely to be drinking alcohol. Family relationship quality did not moderate the relationship between pubertal stage and alcohol use. Family conflict alone was related to adolescent alcohol use and parent-adolescent emotional closeness did not play the expected protective role in this sample. There was also no indication that family conflict moderated the association between pubertal stage and alcohol use.

These findings contribute significantly to our understanding of the complex interplay of adolescent physical and emotional development, family and peer influences, and alcohol use.

**CYSAR Staff:** Karen Li (PhD Student), Adrian Kelly, Gary Chan  
**Collaborators:** John Toumbourou, George Patton, Joanne Williams (Deakin University)

### Steep trajectories of alcohol use in young adolescents: What social influences are significant at what time?

The majority of adolescents show steady growth in alcohol use over their teen years, but a substantial minority show rapid growth in alcohol use. PhD Student Gary Chan has been leading a research project investigating the timing and strength of different social influences on alcohol use and how these influences are related to rapid escalation.

This project reflects an important collaboration with our research partners at QUT, Deakin University (Melbourne), and the University of Washington (USA). Gary has analysed longitudinal data from the Australian arm of the International Youth Development Study, featuring 808 Australian adolescents who were surveyed annually from Grade 5-11 (except Grade 8).

Latent class growth analysis and logistic regression identified five drinking trajectories – the stable and moderate drinker (7.92% of the total sample), the early high drinker (2.84%), the slow increaser (67.3%), the late and rapid escalator (8.17%) and the non-drinker (13.7%). Relative to the non-drinkers, having drinking siblings, having drinking friends and low school connectedness in Grade 5 and 7 predicted late and rapid escalation in Grade 9. Low parental supervision at Grade 9 was also associated with such escalation.

This longitudinal research is important in that it allows us to better understand the social influences that cause rapid growth in alcohol use in adolescence. Targeting these factors through prevention programs is likely to assist parents and teenagers to reduce the risks associated with early onset alcohol use.

**CYSAR Staff:** Gary Chan, Adrian Kelly  
**Collaborators:** John Toumbourou (Deakin University), Ross Young (QUT), Michele Haynes (UQ), Sheryl Hemphill (Deakin University), Richard Catalano (University of Washington).





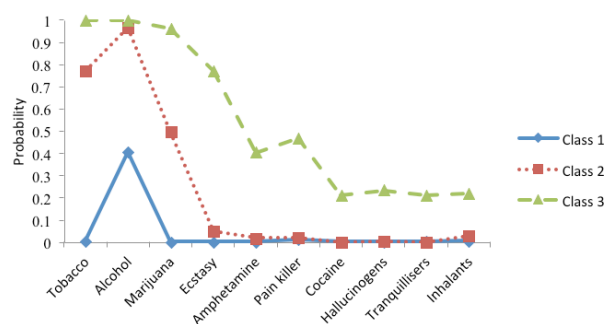
# Policy & Population Research

## The Bigger Picture

### Teenage drug use in Australia: Patterns of use

Despite knowing that underage drug use occurs in Australia, little is known about the patterns of use by Australian teenagers. The team from CYSAR extracted data on the 1400 adolescents aged 12-17 years in the Australian 2007 National Drug Strategy Household Survey. The focus was on lifetime use of the 10 most prevalent substances, as well as a number of variables that commonly predict substance use.

Latent Class Analysis was used to identify patterns of use and whether Australian teenagers use multiple substances. We found that the great majority of teenagers only used alcohol (Class 1; 79.6%); 18.3% limited their substance use to three drugs – alcohol, tobacco & marijuana (Class 2); and 2% used extensive substances (more than 3).



Perceived peer drug use and psychological distress predicted membership of the second and third classes of multiple drug use, with psychological distress more significantly predicting extensive substance use (more than 3 types of drugs).

These findings are significant in understanding teenage substance use and highlight the importance of focusing on alcohol use and the links between alcohol, tobacco and marijuana in prevention programs. In addition, psychological distress may be an important target for screening and early intervention for teenagers who use multiple drugs.

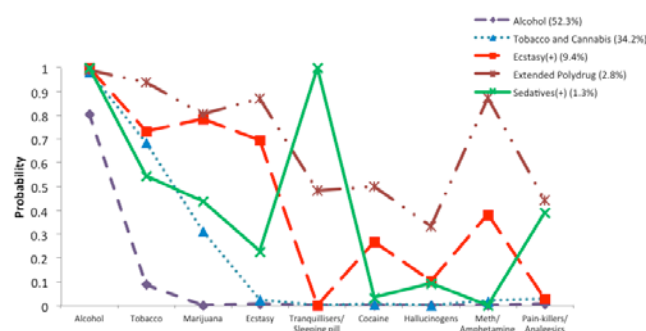
**CYSAR Staff: Angela White, Gary Chan, Lake-Hui Quek, Jason Connor, John Saunders, Peter Baker, Charlotte Brackenridge, Adrian Kelly**

### Multiple drug use in Australian young adults: Patterns and predictors

Alcohol and illicit drug use peak during young adulthood (18-29 years), but comparatively little is known about patterns of multiple drug use at this vulnerable age. Drawing on a nationally representative survey (2007 Australian National Drug Strategy Household Survey), the CYSAR team examined multiple drug use patterns and associated psychosocial risk factors among young adults (n = 3,333; age 18-29).

A broad range of licit and illicit drug use were examined, including alcohol, tobacco, cannabis, cocaine, hallucinogens, ecstasy, ketamine, gamma-Hydroxybutyric acid (GHB), inhalants, steroids, barbiturates, meth/amphetamines, heroin, methadone/buprenorphine, other opiates, painkillers and tranquilizers/sleeping pills. Latent class analysis was used to identify patterns of polydrug use.

A 5-class solution of polydrug use was found. The majority of young adults predominantly used alcohol only (Alcohol, 52.3%) or alcohol, tobacco and cannabis (Tobacco and Cannabis, 34.2%). Young adults also used ecstasy and a broad range of other drugs [Ecstasy(+), 9.44% and Extended Polydrug, 2.79%]. Sedatives(+) (1.31%) was characterised by universal use of alcohol and sedatives, and to a lesser extent other drugs (see figure below).



Risk factors for polydrug use included being male, older, single, not completing high school, high income, unemployment, peer substance use, suboptimal health and psychological distress. This research highlights the importance of post-high school screening for key risk factors and polydrug use profiles, and the delivery of early intervention strategies targeting illicit drugs.

**CYSAR Staff: Lake-Hui Quek, Gary Chan, Angela White, Jason Connor, Peter Baker, John Saunders, Adrian Kelly**

## Does increased infrastructure and supports make entertainment precincts safer?

Entertainment Precincts (EPs) with their high concentrations of pubs, bars and nightclubs are a major drawcard for young people wanting a fun night out. For many Australians alcohol has become a key ingredient in socialising and 'partying' within these locations (Criminal Justice Research, 2013). The large concentrations of young people in EPs, many of whom are intoxicated, often leads to significant alcohol-related injury, violence and disorder issues with obvious public health costs and social ramifications. Concern over high-risk drinking in these precincts has led to a range of policy and community interventions, yet rarely have they been assessed or tracked over time. Such policy evaluations have been limited by the lack of long term, systematic 'real world' measures of alcohol-related harm.



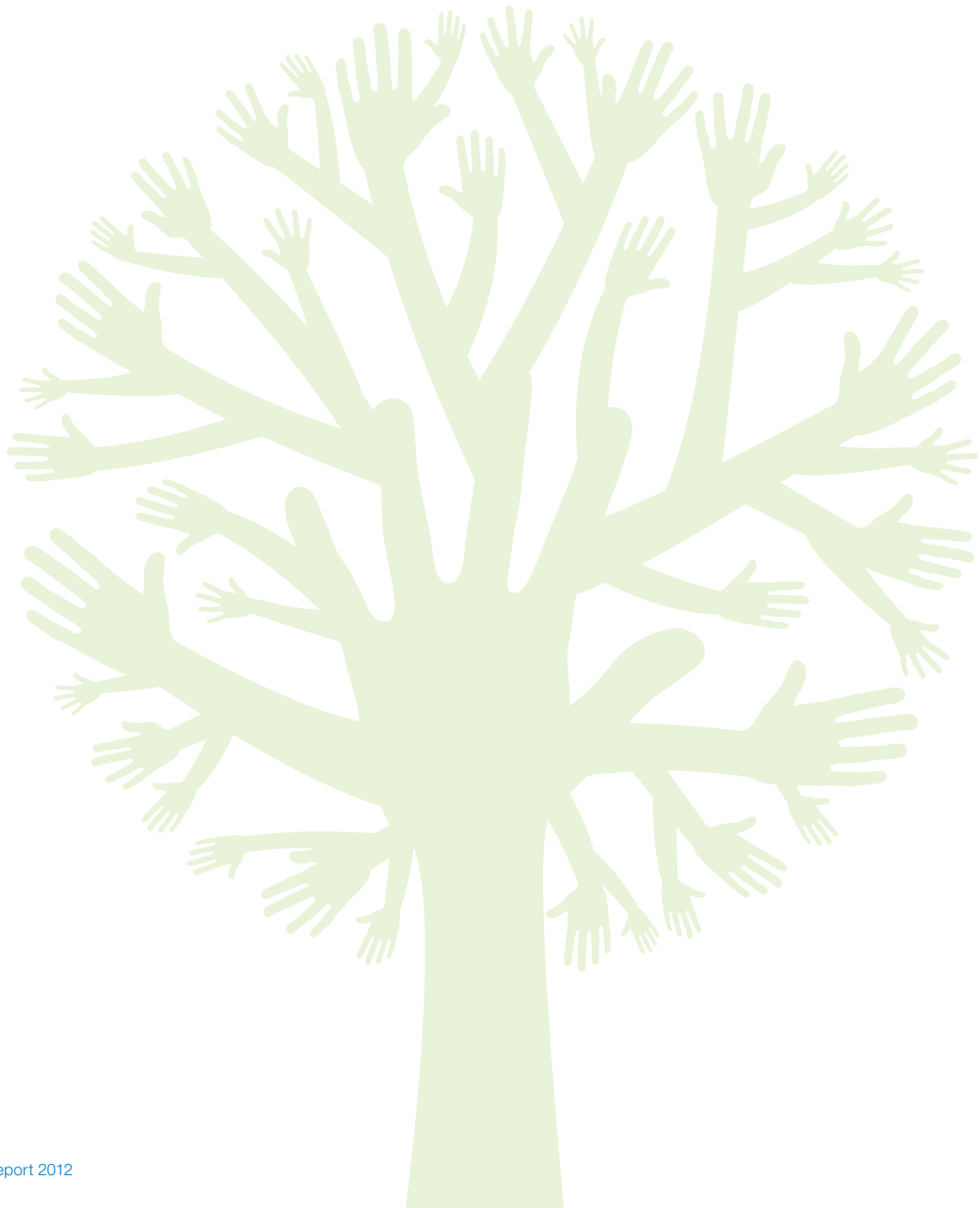
In response to growing community concern about alcohol-related violence, in 2010 the Queensland Government commenced a 2-year trial of Drink Safe Precincts (DSPs), which has recently been extended to September 2013. This policy initiative targeted alcohol-related injury and violence within high-risk EPs and involved a number of key measures - increased police presence/visibility and augmented police powers to remove/exclude troublemakers; improved coordination between venues, police, ambulance, community support services and transport providers; and enhanced security and support/recovery services to assist intoxicated young people. DSP sites were established in Fortitude Valley, Surfers Paradise and Townsville.

The Department of Premier and Cabinet engaged CYSAR to undertake a comprehensive, independent, technical evaluation of the Drink Safe Precincts trial. The evaluation utilised administrative activity data from a number of key agencies including Queensland Police Service (QPS); Queensland Ambulance Service (QAS); Queensland Health; and the Office of Liquor and Gaming Regulation (OLGR). To date CYSAR has produced two of three technical analysis reports. The preliminary findings from the 14 month analysis of the DSP trial have been incorporated into the Interim Evaluation Report published on the Queensland Government website: [http://www.olgr.qld.gov.au/resources/liquorDocs/DSP\\_InterimEvaluationReport2012.pdf](http://www.olgr.qld.gov.au/resources/liquorDocs/DSP_InterimEvaluationReport2012.pdf). The final evaluation report will be published in mid 2013 and will be critical in the ongoing development and implementation of entertainment precinct alcohol related policy initiatives.

**CYSAR staff:** Angela White, Peter Baker, Maria Plotnikova, Jason Connor.

**Collaborators:** Steve Kisely, Health LinQ.

# CYSAR Publications & Grants



## Peer Reviewed Publications by CYSAR Staff

- Baker, A. L., Hiles, S. A., Thornton, L. K., **Hides, L.**, & Lubman, D. I. (2012). A systematic review of psychological interventions for excessive alcohol consumption among people with psychotic disorders. *Acta Psychiatrica Scandinavica*, 126(4), 243-255.
- Baker, A. L., Thornton, L. K., **Hides, L.**, & Dunlop, A. (2012). Treatment of cannabis use among people with psychotic disorders: A critical review of randomised controlled trials. *Current Pharmaceutical Design*, 18(32), 4923-4937.
- Baker, A. L., Thornton, L. K., Hiles, S., **Hides, L.**, & Lubman, D. I. (2012). Psychological interventions for alcohol misuse among people with co-occurring depression or anxiety disorders: A systematic review. *Journal of Affective Disorders*, 139(3), 217-229.
- Baranoff, J., Hanrahan, S. J., Kapur, D., & **Connor, J. P.** (In Press). Acceptance as a process variable in relation to catastrophizing in multi-disciplinary pain treatment. *European Journal of Pain*.
- Baranoff, J., Hanrahan, S. J., Kapur, D., & **Connor, J. P.** (In Press). Validation of the Chronic Pain Acceptance Questionnaire-8 in an Australian pain clinic sample. *International Journal of Behavioral Medicine*.
- Barnett, A. G., **Baker, P.**, & Dobson, A. J. (2012). Analysing seasonal data. *The R Journal*, 4 (1), 5-10.
- Betts, K., Williams, G. M., Najman, J. M., & **Alati, R.** (In Press). The impact of physical and sexual assault on full and partial post-traumatic stress disorder in males and females. *Journal of Traumatic Stress*.
- Betts, K. S., Williams, G. M., Najman, J. M., Bor, W., & **Alati, R.** (2012). Pre-trauma verbal ability at five years of age and the risk of post-traumatic stress disorder in adult males and females. *Journal of Psychiatric Research*, 46(7), 933-939.
- Betts, K. S., Williams, G. M., Najman, J. M., Scott, J., & **Alati, R.** (In Press). The association between lower birth weight and comorbid generalised anxiety and major depressive disorder. *Journal of Affective Disorders*.
- Bruno, R., Matthews, A. J., Dunn, M., **Alati, R.**, McLlwraith, F., Hickey, S., Burns, L., & Sindich, N. (2012). Emerging psychoactive substance use among regular ecstasy users in Australia. *Drug and Alcohol Dependence*, 124(1-2), 19-25.
- Chan, G., Kelly, A.**, & Toumbourou, J. W. (In Press). Accounting for the association of family conflict and heavy alcohol use among adolescent girls: The role of depressed mood. *Journal of Studies on Alcohol and Drugs*.
- Connolly, J. M., Kavanagh, D. J., Baker, A. L., Kay-Lambkin, F. J., Lewin, T. J., Davis, P. J., & **Quek, L.-H.** (In Press). Craving as a predictor of treatment outcomes in heavy drinkers with comorbid depressed mood. *Addictive Behaviors*.
- Cotton, S., Lambert, M., Schimmelmman, B., Mackinnon, A., Gleeson, J., Berk, M., **Hides, L.**, Chanen, A., Scott, J., McGorry, P., & Conus, P. (2012). First episode schizophrenia and schizoaffective disorder: A psychiatric nosology. *Early Intervention in Psychiatry*, 6, 53-53.
- Cotton, S. M., Lambert, M., Schimmelmman, B. G., Mackinnon, A., Gleeson, J. F. M., Berk, M., **Hides, L.**, Chanen, A., Scott, J., McGorry, P., & Conus, P. (2012). Depressive symptoms in first episode schizophrenia spectrum disorder. *Schizophrenia Research*, 134(1), 20-26.
- Cotton, S. M., Lambert, M., Schimmelmman, B. G., Mackinnon, A., Gleeson, J. F. M., Berk, M., **Hides, L.**, Chanen, A.M., Scott, J., Schottle, D., McGorry, P.D., & Conus, P. (In Press). Differences between first episode schizophrenia and schizoaffective disorder. *Schizophrenia Research*.
- David, M., **Alati, R.**, Ware, R. S., & Kinner, S. A. (In Press). Contact intensity is positively associated with continued study participation in a hard-to-reach population. *Journal of Clinical Epidemiology*.
- David, M. C., Bensink, M., Higashi, H., Donald, M., **Alati, R.**, & Ware, R. S. (2012). Monte Carlo simulation of the cost-effectiveness of sample size maintenance programs revealed the need to consider substitution sampling. *Journal of Clinical Epidemiology*, 65(11), 1200-1211.
- Deane, F., Marshall, S., Crowe, T., **White, A.**, & Kavanagh, D. (In Press). Carers' hope, wellbeing and attitudes regarding recovery. *Community Mental Health Journal*.
- Elphinston, R. A., Feeney, J. A., Noller, P., **Connor, J. P.**, & Fitzgerald, J. (In Press). Romantic jealousy and relationship satisfaction: The costs of rumination. *Western Journal of Communication*.
- Fraser, S., **Hides, L.**, Philips, L., Proctor, D., & Lubman, D. I. (2012). Differentiating first episode substance induced and primary psychotic disorders with concurrent substance use in young people. *Schizophrenia Research*, 136(1-3), 110-115.
- Gullo, H. L., Fleming, J., Bennett, S., **Gullo, M. J.**, & Shum, D. (2012). Probing the complex interplay between executive dysfunction, depression and physical/cognitive fatigue in multiple sclerosis using structural equation modelling. *Multiple Sclerosis Journal*, 18, 693-693.
- Gullo, M. J.** (2012). Impulsivity and reversal learning. In N. M. Seel (Ed.), *Encyclopedia of the Sciences of Learning*. New York: Springer.

### Important link found between family conflict, depression and binge drinking

Gary Chan (CYSAR PhD Student), Adrian Kelly, and John Toumbourou (Deakin University) recently published a paper in the Journal of Studies on Alcohol and Drugs, which explored the links between family conflict, depression, and heavy alcohol use amongst very young Australians.

The key findings were that over the ages of 12-14, family conflict is linked to subsequent depression in both girls and boys, but this association is stronger for girls. Depressed mood predicts subsequent involvement in heavy alcohol use.

The findings have implications for broadening universal prevention approaches, which often start subsequent to these ages, to a focus on identifying vulnerable families and offering evidence-based early intervention. The findings are important because they capture an important developmental phase that is often missed in adolescent-focused research.

Chan, Gary., Kelly, Adrian., & Toumbourou, John W. (In Press) Accounting for the Association of Family Conflict and Heavy Alcohol Use Among Adolescent Girls: The Role of Depressed Mood. *Journal of Studies on Alcohol and Drugs*.

# Publications & Grants

- Gullo, M. J., & O'Gorman, J. G.** (2012). DSM-5 task force proposes controversial diagnosis for dishonest scientists. *Perspectives on Psychological Science*, 7(6), 689-689.
- Hall, W. D., & Alati, R.** (2012). Gateway patterns of drug use. In R. Levesque (Ed.), *Encyclopedia of adolescence* (pp. 1116-1122). New York: Springer.
- Hickey, S., McIlwraith, F., Bruno, R., Matthews, A., & **Alati, R.** (2012). Drug detection dogs in Australia: More bark than bite? *Drug and Alcohol Review*, 31(6), 778-783.
- Hides, L.** (2012). Delusional-like experiences are more common in those with cannabis dependence disorder, very early-onset alcohol use or dependence disorders, and daily smokers. *Evidence-based Mental Health*, 15(3), 67-67.
- Hides, L.,** Carroll, S., Scott, R., Baker, A., & Lubman, D. (In Press). The efficacy of a brief motivational interviewing intervention (Quik Fix) for young people with comorbid alcohol/cannabis use and psychological distress. *Psychotherapy and Psychosomatics*.
- Hoy, D., Brooks, P., Woolf, A., Blyth, F., March, L., Bain, C., **Baker, P.**, Smith, E., & Buchbinder, R. (2012). Assessing risk of bias in prevalence studies: Modification of an existing tool and evidence of interrater agreement. *Journal of Clinical Epidemiology*, 65(9), 934-939.
- Kargarfard, M., Etemadifar, M., **Baker, P.**, Mehrabi, M., & Hayatbakhsh, R. (2012). Effect of aquatic exercise training on fatigue and health-related quality of life in patients with multiple sclerosis. *Archives of Physical Medicine and Rehabilitation*, 93(10), 1701-1708.
- Kavanagh, D. J., & **Connor, J. P.** (In Press). Craving: A research update: Editorial to a Special Issue. *Addictive Behaviors*, 38.
- Kavanagh, D. J., Statham, D. J., **Feeney, G. F. X.**, Young, R. M., May, J., Andrade, J., & **Connor, J. P.** (In Press). Measurement of Alcohol Craving. *Addictive Behaviors*, 38, 1572-1584.
- Kelly, A., Chan, G. C. K., & O'Flaherty, M.** (2012). How important is the context of an adolescent's first alcoholic drink? Evidence that parental provision may reduce later heavy episodic drinking. *European Addiction Research*, 18(3), 140-148.
- Kelly, A. B.** (2012). Perceived father's care protects adolescents from transitions to tobacco use at a highly vulnerable age: A short-term longitudinal study. *Mental Health and Substance Use*, 5(2), 173-181.
- Kelly, A. B., Chan, G. C. K.,** Toumbourou, J. W., O'Flaherty, M., Homel, R., Patton, G. C., & Williams, J. (2012). Very young adolescents and alcohol: Evidence of a unique susceptibility to peer alcohol use. *Addictive Behaviors*, 37(4), 414-419.
- Kelly, A. B., & Connor, J. P.** (2012). Review: Some universal family-based prevention programmes provide small reductions in alcohol use in youths in the short and long term. *Evidence-based Mental Health*, 15(1), 16-16.
- Kelly, A. B., & Connor, J. P.** (2012). Substance use disorders in young people: Evidence-based prevention and treatment. In M. L. Caltabiano & L. A. Ricciardelli (Eds.), *Applied Topics in Health Psychology* (pp. 333-347). UK: Wiley-Blackwell.
- Kelly, A. B.,** O'Flaherty, M., Toumbourou, J. W., Homel, R., Patton, G. C., **White, A.**, & Williams, J. (2012). The influence of families on early adolescent school connectedness: Evidence that this association varies with adolescent involvement in peer drinking networks. *Journal of Abnormal Child Psychology*, 40(3), 437-447.
- Kinner, S. A., Dietze, P. M., Gouillou, M., & **Alati, R.** (2012). Prevalence and correlates of alcohol dependence in adult prisoners vary according to Indigenous status. *Australian and New Zealand Journal of Public Health*, 36(4), 329-334.
- Kisely, S., Asbridge, M., **Connor, J., White, A.,** Pais, J., & Lin, E. (2012). Using administrative health data for the surveillance of interventions for alcohol-related harm among young people. *Canadian Medical Association Journal*, 184(1), 49-53.
- Lawford, B. R., Barnes, M., **Connor, J. P.,** Burton, S. C., Voisey, J., Nyst, P., Noble, E.P., & Young, R. M. (In Press). DRD2/ANKK1 Taq1A genotypes are associated with susceptibility to atypical antipsychotic-induced akathisia. *Journal of Psychopharmacology*.
- Lawford, B. R., Barnes, M., **Connor, J. P.,** Heslop, K., Nyst, P., & Young, R. M. (2012). Alcohol Use Disorders Identification Test (AUDIT) scores are elevated in antipsychotic-induced hyperprolactinaemia. *Journal of Psychopharmacology*, 26(2), 324-329.
- Lewis, S. J., Zuccolo, L., Davey Smith, G., Macleod, J., Rodriguez, S., Draper, E. S., Barrow, M., **Alati, R.,** Sayal, K., Ring, S., Golding, J., Gray, R. Fetal Alcohol Exposure and IQ at Age 8: Evidence from a Population-Based Birth-Cohort Study. *PLoS ONE*. 2012;7(11):e49407.

## Alcohol use in pregnancy and adverse outcomes in childhood: Findings from the 'Children of the 90's' study

Rosa Alati and colleagues recently published a paper in PLoS One which explored the effects of maternal moderate alcohol use in pregnancy on a variety of neuro-developmental outcomes in offspring. This project, which is part of ongoing international collaborations with the Department of Social Medicine in Bristol and the National Perinatal Epidemiology Unit at the University of Oxford, was funded by a Wellcome Trust grant.

The study collected comprehensive data on over 14,000 mothers and their children from 1990 in the Avon area of England. A sophisticated method of statistical analysis, called Mendelian Randomisation, was used to assess associations between light alcohol use in pregnancy and IQ at age 8. The study is the first to suggest that any alcohol used in pregnancy can affect the child's intelligence, though effect sizes are small.

Lewis SJ, Zuccolo L, Davey Smith G, Macleod J, Rodriguez S, Draper ES, Barrow M, **Alati R**, Sayal K, Ring S, Golding J, Gray R. Fetal Alcohol Exposure and IQ at Age 8: Evidence from a Population-Based Birth-Cohort Study. *PLoS ONE*. 2012;7(11):e49407.



## Health Promotion for Children and Adolescents: Preventing Alcohol-related harm

Hannah Thomas, Adrian Kelly and John Toumbourou (Deakin University) co-authored a book chapter on how peers, families and the wider community have an impact on adolescent alcohol use. They review the effectiveness of current prevention programs to reduce adolescent alcohol use, and specifically how health professionals can help increase prevention through their work with young people in school, family and community settings. The chapter will soon be published in *Psychosocial Dimensions in Medicine*, edited by Jennifer Fitzgerald and Gerard Byrne (School of Medicine, The University of Queensland), and will be used as a text for medical students, as well as health and allied health professionals in training.

**Thomas, H., Kelly, A. B., & Toumbourou, J. W.** (In Press). Health promotion for children and adolescents: Alcohol, tobacco, and other drug problems. In J. Fitzgerald & G. Byrne (Eds.), *Psychological Dimensions in Medicine: IP Communications*.

IQ at age 8: Evidence from a population-based birth-cohort study. *Plos One*, 7(11), e49407-e49407.

**Li, H. K., & Dingle, G. A.** (2012). Using the Drinking Expectancy Questionnaire (revised scoring method) in clinical practice. *Addictive Behaviors*, 37(2), 198-204.

Li, S., Williams, G., Jalaludin, B., & **Baker, P.** (2012). Panel studies of air pollution on children's lung function and respiratory symptoms: A literature review. *Journal of Asthma*, 49(9), 895-910.

McIlwraith, F., **Alati, R.**, & Sindich, N. (2012). Do consumers of ecstasy-type pills take preventative measures to avoid bad effects of unknown content? *Drug and Alcohol Review*, 31, 66-66.

McKenzie, K., Lomborg, J., Barker, R., & **Hides, L.** (In Press). A comparison of methods to identify alcohol involvement in youth injury-related emergency department presentation data. *Drug & Alcohol Review*.

Mills, R., Scott, J., **Alati, R.**, O'Callaghan, M., Najman, J. M., & Strathearn, L. (In Press). Child maltreatment and adolescent mental health problems in a large birth cohort. *Child Abuse and Neglect*.

Pahl, K. M., Barrett, P. M., & **Gullo, M. J.** (2012). Examining potential risk factors for anxiety in early childhood. *Journal of Anxiety Disorders*, 26(2), 311-320.

**Quek, L. H.**, Sofronoff, K., Sheffield, J., **White, A.**, & **Kelly, A.** (2012). Co-occurring anger in young people with Asperger's Syndrome. *Journal of Clinical Psychology*, 68(10), 1142-1148.

**Quek, L. H., White, A.**, Low, C., Brown, J., Dalton, N., Dow, D., & **Connor, J. P.** (2012). Good choices, great future: An applied theatre prevention program to reduce alcohol-related risky behaviours during Schoolies. *Drug and Alcohol Review*, 31(7), 897-902.

Rebgetz, S., Conus, P., **Hides, L.**, Kavanagh, D., Cotton, S., Schimmelmann, B., McGorry, P.D., & Lambert, M. (In Press). Predictors of substance use reduction in an epidemiological first-episode psychosis cohort. *Early Intervention in Psychiatry*.

Rowland, B., Toumbourou, J. W., Osborn, A., Smith, R., Hall, J. K., Kremer, P., **Kelly, A. B.**, Williams, J., & Leslie, E. (In Press). A clustered randomised trial examining the effect of social marketing and community mobilisation on the age of uptake and levels of alcohol consumption by Australian adolescents: Study protocol. *British Medical Journal Open*.

**Salom, C. L., Holman, A., Connor, J. P.**, Toumbourou, J. W., & **Kelly, A. B.** (2012). Evidence that community-based prevention reduces adolescent alcohol use: A commentary on Gilligan et al. *Drug and Alcohol Review*, 31(7), 930-931.

Scott, L. A., Bruno, R., Burns, L., Van Buskirk, J., **Alati, R.**, & Matthews, A. (2012). The prevalence and correlates of neurological illness and traumatic brain injury (TBI) among Australian frequent drug users. *Drug and Alcohol Review*, 31, 50-50.

Scott, R. M., **Hides, L.**, Allen, J. S., & Lubman, D. I. (In Press). Subacute effects of ecstasy on mood: an exploration of associated risk factors. *Journal of Psychopharmacology*, 27(1), 53-61.

Stallman, H. M., Kavanagh, D., & **White, A.** (2012). Internet interventions for treatment of alcohol-related problems. *Cochrane Database of Systematic Reviews*, 11.

Swagell, C. D., Lawford, B. R., Hughes, I. P., Voisey, J., Feeney, G. F. X., van Daal, A., **Connor, J. P.**, Noble, E. P., Morris, C. P., & Young, R. M. (2012). DRD2 C957T and TaqIA genotyping reveals gender effects and unique low-risk and high-risk genotypes in alcohol dependence. *Alcohol and Alcoholism*, 47(4), 397-403.

**Thomas, H., Kelly, A. B.**, & Toumbourou, J. W. (In Press). Health promotion for children and adolescents: Alcohol, tobacco, and other drug problems. In J. Fitzgerald & G. Byrne (Eds.), *Psychological Dimensions in Medicine: IP Communications*.

Thorberg, F. A., Young, R. M., Sullivan, K. A., Lyvers, M., Hurst, C., Tyssen, R., **Connor, J. P.**, & Feeney, G. F. X. (In Press). Confirmatory factor analysis of the Observer Alexithymia Scale (OAS) in treatment seeking alcohol dependent patients. *Journal of Substance Use*.

**White, A.**, Chan, G. C. K., **Quek, L. H.**, **Connor, J. P.**, **Saunders, J.**, **Baker, P.**, **Brackenridge, C.**, & **Kelly, A.** (In Press). The topography of multiple drug use among adolescent Australia: Findings from the National Drug Strategy Household Survey. *Addictive Behaviors*.

Young, R. M., **Gullo, M. J.**, **Feeney, G. F. X.**, & **Connor, J. P.** (2012). Development and validation of the Cannabis Refusal Self-Efficacy Questionnaire (CRSEQ) in adult cannabis users in treatment. *Drug and Alcohol Dependence*, 125(3), 244-251.

# Publications & Grants

## Technical Reports, Resources and Other Staff Publications

- Gullo, M. J.** (2012). A dangerous method? In defence of Freud's psychoanalysis. *The Conversation*, March, from <http://the-conversation.edu.au/a-dangerous-method-in-defence-of-freuds-psychoanalysis-5989>
- Holman, A., Salom, C., Kelly, A., Williams, J., & Toumbourou, J. W.** (2012). *Queensland Healthy Neighbourhoods Survey of School Children in Redcliffe: 2006*. Published by Communities that Care and the Centre for Youth Substance Abuse Research.
- Holman, A., Salom, C., Kelly, A., Williams, J., & Toumbourou, J. W.** (2012). *Queensland Healthy Neighbourhoods Survey of School Children in Robina: 2006*. Published by Communities that Care and the Centre for Youth Substance Abuse Research.
- Holman, A., Salom, C., Kelly, A., Williams, J., & Toumbourou, J. W.** (2012). *Queensland Healthy Neighbourhoods Survey of School Children in Woodridge/Kingston: 2006*. Published by Communities that Care and the Centre for Youth Substance Abuse Research.
- Salom, C.** (2012). Communities that Care Queensland Community Activity Survey Report 2012 Redcliffe.
- Salom, C.** (2012). Communities that Care Queensland Community Activity Survey Report 2012 Robina.
- Salom, C.** (2012). Communities that Care Queensland Community Activity Survey Report 2012 Woodridge/Kingston.
- White, A., Baker, P., Plotnikova, M., Connor, J.P., & Kisely, S.** (2012). *The Queensland Drink Safe Precincts Initiative: Technical Analysis Report 1*. Brisbane, Australia: Centre for Youth Substance Abuse Research (CYSAR) and Health LinQ, The University of Queensland.
- White, A., Baker, P., Plotnikova, M., Connor, J.P., & Kisely, S.** (2012). *The Queensland Drink Safe Precincts Initiative: Technical Analysis Report 2*. Brisbane, Australia: Centre for Youth Substance Abuse Research (CYSAR) and Health LinQ, The University of Queensland.

## Conferences and Presentations

- Alati, R.** (2012). *Invited Paper - Lifestyle factors in pregnancy and their effects on cognition and mental health problems in the offspring*. Paper presented at the Institute of Advanced Studies, Alma Mater Studiorum, Bologna, Italy.
- Alati, R.** (2012). *Invited Paper - Does in-utero alcohol exposure impact on adverse outcomes in offspring?* Paper presented at the Unit of Cancer Epidemiology, University of Turin, Italy.
- Baranoff, J., Hanrahan, S. J., Kapur, D., & Connor, J. P.** (2012). *Factor structure of the Short Form of the Chronic Pain Acceptance Questionnaire*. Paper presented at the 10th World Conference of Association for Contextual Behavioural Science, Washington D.C., USA.
- Chan, G. C. K., Kelly, A., Toumbourou, J. W., Young, R., Haynes, M., Hemphill, S., & Catalano, R.** (2012). Predicting steep trajectories of alcohol use in young adolescents: Evidence of age-related variation in key risk factors. *Drug and Alcohol Review*, 31, 71-71. Paper presented at the Australasian

Professional Society on Alcohol and other Drugs (APSAD) Scientific Conference, Melbourne, Australia.

- Connolly, J., Kavanagh, D. J., Quek, L. H., Gibson, J., Edge, S., & Klein, B.** (2012). *Internet-based psychological interventions: Are indices of usage and engagement predictive of treatment response?* Paper presented at the APS ePsychology Workshop and Conference, Brisbane, Australia.
- Connor, J. P., George, S. M., & Young, R. M.** (2012). The relationship between school connectedness and alcohol use in young adolescents: A prospective study. *Alcoholism-Clinical and Experimental Research*, 36(Supplement 2), 129a-129a. Paper presented at the 35th Annual Scientific Meeting of the Research Society on Alcoholism (RSA), San Francisco, USA.
- Connor, J. P., Pegum, N., Feeney, G. F. X., & Young, R. M.** (2012). Psychological and psychosocial functioning in patients with alcohol-related liver disease pre- and post-liver transplantation. *Alcoholism-Clinical and Experimental Research*, 36(Supplement 2), 239a-239a. Paper presented at the 35th Annual Scientific Meeting of the Research Society on Alcoholism (RSA), San Francisco, USA.
- Field, M., Fernie, G., Gullo, M. J., Christiansen, P., Cole, J. C., & Sumnall, H. R.** (2012). The relationship between inhibitory control and developmental changes in adolescent alcohol use. *Alcoholism-Clinical and Experimental Research*, 36(Supplement 2), 30A-30A. Paper presented at the 16th World Congress of the International Society for Biomedical Research on Alcoholism (ISBRA), Sapporo, Japan.
- Field, M., Gullo, M., & Dickson, J.** (2012). Quantifying the push and pull of alcohol: Self-reported and automatic measures of alcohol ambivalence. *Alcoholism-Clinical and Experimental Research*, 36(Supplement 2), 103A-103A. Paper presented at the 16th World Congress of the International Society for Biomedical Research on Alcoholism (ISBRA), Sapporo, Japan.
- Gullo, M. J., Ward, E., Dawe, S., Powell, J., & Jackson, C. J.** (2012). Support for a two-factor model of impulsivity and hazardous substance use in British and Australian young adults. *Alcoholism-Clinical and Experimental Research*, 36(Supplement 2), 104A-104A. Paper presented at the 16th World Congress of the International Society for Biomedical Research on Alcoholism (ISBRA), Sapporo, Japan.
- Hides, L., Baker, A., Christie, G., & Kypri, K.** (2012). Symposium - How effective are brief motivational interviewing interventions: Are they necessary? Do they require enhancement? Can they be translated into routine clinical practice? *Drug and Alcohol Review*, 31(Supplement 1), 10-10. Symposium presented at the Australasian Professional Society on Alcohol and other Drugs (APSAD) Scientific Conference, Melbourne, Australia.
- Hides, L., Kavanagh, D., Daglish, M., & Proctor, D.** (2012). Telephone delivered brief interventions for reducing alcohol use and related problems and injuries in young people accessing emergency departments. *Drug and Alcohol Review*, 31(Supplement 1), 10-10. Paper presented at the Australasian Professional Society on Alcohol and other Drugs (APSAD) Scientific Conference, Melbourne, Australia.
- Kelly, A. B.** (2012). *Adolescent tobacco use: Implications for prevention*. Paper presented at the 4th Annual Conference on Life Skills Education, Mumbai, India.
- Kelly, A. B.** (2012). *Symposium for Adolescent Risk and Protective Factors: Gender-based variations in the association of family relationship quality and alcohol use among very young adolescents*. Paper presented at the Society for Prevention Research Annual Convention, Washington D.C., USA.

**Quek, L. H., Chan, G., White, A., Connor, J. P., Baker, P., Saunders, J., & Kelly, A. B.** (2012). Multiple drug use in adolescents and young adults. *Drug and Alcohol Review*, 31(Supplement 1), 58-58. Paper presented at the Australasian Professional Society on Alcohol and other Drugs (APSAD) Scientific Conference, Melbourne, Australia.

**Quek, L. H., White, A., Low, C., Brown, J., Dalton, N., Dow, D., & Connor, J. P.** (2012). *Good choices, great future: An applied theatre prevention program to reduce alcohol-related risky behaviours during Schoolies*. Paper presented at the Walk on the Wildside Alcohol and Drug Conference, Brisbane, Australia.

Thorberg, F. A., Young, R. M., Sullivan, K. A., Lyvers, M., **Connor, J. P.**, Landheim, A. S., Tyssen, R., & **Feeney, G. F. X.** (2012). Alexithymia in alcohol dependent patients: Gender differences, associations with craving and dependence severity. *International Journal of Psychology*, 47(Supplement 1), 94. Paper presented at the International Congress of Psychology, Cape Town, South Africa.

Thorberg, F. A., Young, R. M., Sullivan, K. A., Lyvers, M., **Connor, J. P.**, Landheim, A. S., Tyssen, R., & **Feeney, G. F. X.** (2012). *Alexithymia in alcoholics is mediated by alcohol expectancy, but only for males*. Paper presented at the 3rd Asian Conference on the Social Sciences, Osaka, Japan.

**White, A., Connor, J. P., Quek, L. H.,** Kavanagh, D. J., Tjondronegoro, D., Drennan, J., Johnson, D., & Fitz-Walter, Z. (2012). *'The App evolution' – Can smartphone applications help young people track and moderate alcohol use and potential harms?* Paper presented at the APS ePsychology Workshop and Conference, Brisbane, Australia.

**White, A., Fitz-Walter, Z., Hides, L.,** Kavanagh, D., Koh, D., Johnson, D., Tjondronegoro, D., & **Connor, J.** (2012). *'On Track': Could Smart phones help us track and moderate our alcohol use?* Paper presented at the Walk on the Wild Side Alcohol and Drug Conference, Brisbane, Australia.

## Peer Reviewed Publications by CYSAR Honorary, Affiliate and Adjunct Staff

Ambermoon, P., Carter, A., **Hall, W.**, Dissanayaka, N., & O'Sullivan, J. (2012). Compulsive use of dopamine replacement therapy: A model for stimulant drug addiction? *Addiction*, 107(2), 241-247.

Baker, F. A., **Dingle, G. A.,** & Gleadhill, L. M. (2012). "Must Be the Ganja": Using Rap Music in Music Therapy for Substance Use Disorders. In S. Hadley & G. Yancy (Eds.), *Therapeutic Uses of Rap and Hip-Hop* (pp. 321-336). London, UK: Taylor & Francis.

Bell, S., Lucke, J. C., & **Hall, W. D.** (2012). Lessons for enhancement from the history of cocaine and amphetamine use. *American Journal of Bioethics - Neuroscience*, 3(2), 24-29.

Bell, S., Partridge, B., Lucke, J., & **Hall, W.** (2012). Australian university students' attitudes towards the acceptability and regulation of pharmaceuticals to improve academic performance. *Neuroethics*, 1-9.

Boot, B. P., Partridge, B., & **Hall, W.** (2012). Letter to the Editor: Better evidence for safety and efficacy is needed before neurologists prescribe drugs for neuroenhancement to healthy people. *Neurocase*, 18(3), 181-184.

Bower, J. M., **Carroll, A.,** & Ashman, A. F. (2012). Adolescent perspectives on schooling experiences: The interplay of risk and protective factors within their lives. *International Journal of Educational Research*, 53(0), 9-21.

Burrows, L., Leahy, D., **McCuaig, L.,** & Wright, J. (In Press). *School Health Education in Changing Times: Policies, pedagogies and partnerships*. London: Routledge.

Calabria, B., Swift, W., Slade, T., **Hall, W.,** & Copeland, J. (2012). The perceived health risks of cannabis use in an Australian household survey. *Drug and Alcohol Review*, 31(6), 809-812.

Capps, B., **Hall, W. D.,** & Carter, A. (2012). Addiction. In R. Chadwick (Ed.), *Encyclopedia of applied ethics* (2nd ed., Vol. 1, pp. 22-30). San Diego: Academic Press.

**Carroll, A.,** Ashman, A., Bower, J., & Hemingway, F. (2012). Readiness for change: Case studies of young people with challenging and risky behaviours. *Australian Journal of Guidance and Counselling*.

**Carroll, A.,** Ashman, A., Hemingway, F., & Bower, J. (2012). A preliminary evaluation of Mindfields: A self-regulatory cognitive behavioural program for school-aged adolescent offenders. *The Australian Educational and Developmental Psychologist*, 29(2), 81-94.

**Carroll, A.,** Gordon, K., Haynes, M., & Houghton, S. (In Press). Goal setting and self-efficacy among delinquent, at-risk and not at-risk adolescents. *Journal of youth and adolescence*, 42(3), 431-443.

**Carroll, A.,** Hemingway, F., Ashman, A., & Bower, J. (2012). Establishing the psychometric properties of an interactive, self-regulation assessment battery for young offenders. *Australian Journal of Guidance and Counselling*, 22(1), 102-121.

**Carroll, A.,** & Houghton, S. (2012). Delinquency and learning disabilities. In N. M. Seel (Ed.), *Encyclopaedia of the Sciences of Learning* (Vol. 2, pp. 919-923). New York: Springer.

**Carroll, A.,** Houghton, S., Durkin, K., & Hattie, J. (2012). Reputations. In R. Levesque (Ed.), *Encyclopaedia of Adolescence* (Vol. 4, pp. 2356-2362). New York: Springer.

**Carroll, A.,** Houghton, S., Lynn, S., & Anderman, E. M. (2012). Friendship in school. In J. Hattie & E. M. Anderman (Eds.), *International Guide to Student Achievement*. New York, USA: Routledge.

Carter, A., Capps, B., & **Hall, W. D.** (2012). Emerging neurobiological treatments of addiction: Ethical and public policy considerations. In A. Carter, W. D. Hall & J. Illes (Eds.), *Addiction neuroethics: The ethics of addiction neuroscience research and treatment* (pp. 95-113). New York: Elsevier.

Carter, A., & **Hall, W.** (2012). Avoiding selective ethical objections to nudges. *American Journal of Bioethics*, 12(2), 12-14.

Carter, A., & **Hall, W.** (In Press). Ethical implications of research on craving. *Addictive Behaviors*, 38(2), 1593-1599.

Carter, A., & **Hall, W.** (In Press). Managing suicide risk in experimental trials of DBS in treatment resistant depression. *AJOB Neuroscience*.

Carter, A., **Hall, W.,** Ambermoon, P., Dissanayaka, N., & O'Sullivan, J. (2012). Stimulating debate in the field of addiction. *Addiction*, 107(2), 253-253.



# Publications & Grants

- Carter, A., & **Hall, W. D.** (2012). Addiction may not be a compulsive brain disease, but it is more than purposeful medication of untreated psychiatric disorders (Invited Commentary). *American Journal of Bioethics - Neuroscience*, 3(2), 54-55.
- Carter, A., & **Hall, W. D.** (2012). *Addiction neuroethics: The promises and perils of neuroscience research on addiction*. Cambridge: Cambridge University Press.
- Carter, A., & **Hall, W. D.** (2012). The rights of individuals treated for drug, alcohol, and tobacco addiction. In D. Dudley, D. Silove & F. Gale (Eds.), *Mental health and human rights: Vision, praxis and courage* (pp. 519-529). Oxford: Oxford University Press.
- Carter, A., **Hall, W. D.**, & Illes, J. (Eds.). (2012). *Addiction neuroethics: The ethics of addiction neuroscience research and treatment*. Amsterdam: Elsevier.
- Carter, A., **Hall, W. D.**, & Illes, J. (2012). Introduction: What is addiction neuroethics and why does it matter? In A. Carter, W. D. Hall & J. Illes (Eds.), *Addiction neuroethics: The ethics of addiction neuroscience research and treatment* (pp. xvii-xxv). Amsterdam: Elsevier.
- Carter, A., Miller, P., & **Hall, W. D.** (2012). The ethics of harm reduction. In R. Pates & D. Riley (Eds.), *Harm reduction in substance use and high-risk behaviour: International policy and practice* (pp. 111-123). Chichester: Wiley-Blackwell.
- Chapman, S., Haynes, A., Derrick, G., Sturk, H., & **Hall, W.** (In Press). "An audience that you would never dream of speaking to": Influential public health researchers' views on the role of news media in influencing policy. *Journal of Health Communication*.
- Clark, D. M. T., & **Loxton, N. J.** (2012). Fear, psychological acceptance, job demands and employee work engagement: An integrative moderated mediation model. *Personality and Individual Differences*, 52(8), 893-897.
- Cuskelly, M., Gilmore, L., & **Carroll, A.** (2012). Self-regulation and mastery motivation in individuals with developmental disabilities: Barriers, supports and strategies. In K. C. Barrett, N. A. Fox, G. A. Morgan, D. J. Fidler & L. A. Daunhauer (Eds.), *Handbook of Self-Regulatory Processes in Development: New Directions and International Perspectives* (pp. 381-404). New York, USA: Psychology Press.
- Davis, C., & **Kelly, J.** (2012). Risk-taking, harm and help-seeking: reported by young people in treatment at a youth alcohol and drug counselling service. *Youth Studies Australia*, 31(4), 35-45.
- Davis, C., & **Loxton, N. J.** (In Press). Addictive behaviours and addiction-prone personality traits: Associations with a dopamine multilocus genetic profile. *Addictive Behaviors*.
- Dawe, S., **Dingle, G. A.**, & **Loxton, N. J.** (In Press). Screening and assessment of comorbidity. *Encyclopedia of Addictive Behaviours*: Academic Press.
- Degenhardt, L., Coffey, C., Romaniuk, H., Swift, W., Carlin, J. B., **Hall, W. D.**, & Patton, G. C. (In Press). The persistence of the association between adolescent cannabis use and common mental disorders into young adulthood. *Addiction*.
- Degenhardt, L., & **Hall, W.** (2012). Extent of illicit drug use and dependence, and their contribution to the global burden of disease. *Lancet*, 379(9810), 55-70.
- Degenhardt, L., **Hall, W.**, & Bucello, C. (In Press). Illicit drug use: Prevalence of use, dependence and contribution to burden of disease. In K. J. Sher (Ed.), *Oxford Handbook of Substance Abuse*. Oxford: Oxford University Press.
- Degenhardt, L., & **Hall, W. D.** (2012). What are the policy implications of the evidence on cannabis and psychosis? In D. Castle, R. Murray & D. D'Souza (Eds.), *Marijuana and Madness* (2nd ed., pp. 55-65). New York: Cambridge University Press.
- Degenhardt, L., **Hall, W. D.**, Lynskey, M., Coffey, C., & Patton, G. (2012). The association between cannabis use and depression: A review of the evidence. In D. Castle, R. Murray & D. D'Souza (Eds.), *Marijuana and madness* (2nd ed., pp. 114-128). New York: Cambridge University Press.
- Degenhardt, L. D., Coffey, C., Romaniuk, H., Swift, W., Carlin, J., **Hall, W.**, & Patton, G. (In Press). Early onset cannabis use and common mental disorders: Does the association persist into adulthood? *Addiction*.
- Dingle, G. A.**, Brander, C., Ballantyne, J., & Baker, F. (In Press). "To Be Heard": The social and mental health benefits of choir singing for disadvantaged adults. *Psychology of Music*.
- Dissabandara, L. O., **Loxton, N. J.**, Dias, S. R., Daglish, M., & Stadlin, A. (2012). Testing the fear and anxiety distinction in the BIS/BAS scales in community and heroin-dependent samples. *Personality and Individual Differences*, 52(8), 888-892.
- Douglas, H., Hammil, J., Russell, A., & **Hall, W.** (2012). The importance of foetal alcohol spectrum disorder for criminal law practice: Views of Queensland criminal lawyers. *Queensland Lawyer*, 32, 153-164.
- Douglas, H., Hammill, J., Russell, E., & **Hall, W. D.** (2012). Judicial views of foetal alcohol spectrum disorder in Queensland's criminal justice system. *Journal of Judicial Administration*, 21(3), 178-188.
- Effene, G., **Carroll, A.**, & Bahr, N. (In Press). Self-regulated learning and executive function: Exploring the relationships in a sample of adolescent males. *Educational Psychology: An international journal of experimental educational psychology*.
- Farrell, M., & **Hall, W. D.** (2012). Griffith Edwards: Key contributor to the science and study of addiction: Obituary. *British Medical Journal*, 345, 10.1136/bmj.e7234.
- Forlini, C., **Hall, W.**, Maxwell, B., Outram, S. M., Reiner, P. B., Repantis, D., Schermer, M., & Racine, E. (In Press). Navigating the enhancement landscape. Ethical issues in research on cognitive enhancers for healthy individuals. *EMBO Reports*.
- Gartner, C., Scollo, M., Marquart, L., Mathews, R., & **Hall, W.** (2012). Analysis of national data shows mixed evidence of hardening among Australian smokers. *Australian and New Zealand Journal of Public Health*, 36(5), 408-414.
- Gartner, C. E., Barendregt, J. J., Wallace, A., & **Hall, W. D.** (2012). Would vaccination against nicotine be a cost-effective way to prevent smoking uptake in adolescents? *Addiction*, 107(4), 801-809.
- Gartner, C. E., & **Hall, W. D.** (2012). Is the socioeconomic gap in childhood exposure to secondhand smoke widening or narrowing? *Tobacco Control*, 10.1136/tobaccocontrol-2011-050297, March 30.
- Gartner, C. E., **Hall, W. D.**, & Borland, R. (2012). How should we regulate smokeless tobacco products and e-cigarettes? *Medical Journal of Australia*, 197(11-12), 611-612.

- Hall, W.** (2012). Driving while under the influence of cannabis. *British Medical Journal*, 344.
- Hall, W.** (2012). What place, if any, does information on putative cardioprotective effects of moderate alcohol use have in safer drinking guidelines? *Drug and Alcohol Review*, 31(2), 194-197.
- Hall, W.**, Babor, T., Edwards, G., Laranjeira, R., Marsden, J., Miller, P., Obot, I., Petry, N., Thamarangsi, T., & West, R. (2012). Compulsory detention, forced detoxification and enforced labour are not ethically acceptable or effective ways to treat addiction. *Addiction*, 107(11), 1891-1893.
- Hall, W.**, & Carter, A. (2012). Is deep brain stimulation for addiction an acceptable crime control measure? *Addiction*, 107(7), 1361-1360.
- Hall, W.**, & Carter, A. (In Press). Advocates for compulsory addiction treatment bear the burden of demonstrating its effectiveness, safety and ethical acceptability. *Bulletin of the World Health Organization*.
- Hall, W.**, & Carter, A. (In Press). The history of drug use. In M. Hamilton, A. Ritter & T. King (Eds.), *Drug Use in Society*. Oxford: Oxford University Press.
- Hall, W.**, & Carter, A. (In Press). How may addiction neuroscience affect the way in which the criminal law deals with addicted offenders? In N. Vincent (Ed.), *Legal Responsibility and Neuroscience*. Oxford: Oxford University Press.
- Hall, W.**, & Lucke, J. (In Press). Decriminalisation and legalisation *Encyclopedia of Addictive Behaviours*: Elsevier.
- Hall, W.**, Prichard, J., Kirkbride, P., Bruno, R., Thai, P. K., Gartner, C., Lai, F.Y., Ort, C., & Mueller, J. F. (2012). An analysis of ethical issues in using wastewater analysis to monitor illicit drug use. *Addiction*, 107(10), 1767-1773.
- Hall, W. D.**, Gartner, C., & Mathews, R. (2012). Technical, ethical and social issues in using genetic information to predict addiction liability and treatment response. In A. Carter, W. D. Hall & J. Illes (Eds.), *Addiction neuroethics: The ethics of addiction neuroscience research and treatment* (pp. 115-135). Amsterdam: Elsevier.
- Harnett, P. H., **Loxton, N. J.**, & Jackson, C. J. (In Press). Revised Reinforcement Sensitivity Theory: Implications for psychopathology and psychological health. *Personality and Individual Differences*.
- Hay, P., & **McCuaig, L.** (In Press). Principled positions in Health and Physical Education Contexts. *Physical Education and Sport Pedagogy*.
- Haynes, A. S., Derrick, G. E., Redman, S., **Hall, W. D.**, Gillespie, J. A., Chapman, S., & Sturk, H. (2012). Identifying trustworthy experts: how do policymakers find and assess public health researchers worth consulting or collaborating with? *Plos One*, 7(3), e32665-e32665.
- Hickman, M., Degenhardt, L., Farrell, M., & **Hall, W. D.** (2012). Is the comparison of mortality between patients prescribed implanted or oral naltrexone an unbiased and unconfounded comparison? (Commentary on 'Examination of mortality rates in a retrospective cohort of patients treated with oral or implant naltrexone for problematic opiate use'). *Addiction*, 107(10), 1825-1826.
- Hollingworth, S. A., Symons, M., Khatun, M., Loveday, W., Ballantyne, S., **Hall, W.**, & Najman, J. (In Press). Prescribing databases can be used to monitor trends in opioid analgesic prescribing in Australia *Australian and New Zealand Journal of Public Health*.
- Houghton, S., **Carroll, A.**, Tan, C. L., & Nathan, E. (In Press). Why do bullies bully: Reputations as a predictor of bullying. *School bullying: Predictive factors, coping strategies and effects on mental health*. New York: Nova Science Publishers Inc.
- Houghton, S., Hunter, S. C., Trewin, T., Glasgow, K., & **Carroll, A.** (In Press). The Multidimensional Anxiety Scale for Children: A further validation with Australian adolescents with and without ADHD. *Journal of Attention Disorders*.
- Houghton, S., Tan, C., Khan, U., & **Carroll, A.** (In Press). Rates of self-reported delinquency among Western Australian male and female high school students: The male-female gender gap. *International Journal of Disability, Development and Education*.
- Hunter, E. M., Gynther, B. D., Anderson, C. J., Onnis, L. A., Nelson, J. R., **Hall, W.**, Baune, B.T., & Groves, A. R. (2012). Psychosis in Indigenous populations of Cape York and the Torres Strait. *Medical Journal of Australia*, 196, 133-135.
- Kelly, P. J., Kay-Lambkin, F. J., Baker, A. L., Deane, F. P., Brooks, A. C., Mitchell, A., Marshall, S., Whittington, M., & **Dingle, G. A.** (2012). Study protocol: a randomized controlled trial of a computer-based depression and substance abuse intervention for people attending residential substance abuse treatment. *BMC Public Health*, 12.
- Kypri, K., McCambridge, J., Vater, T., Bowe, S. J., **Saunders, J. B.**, Cunningham, J. A., & Horton, N. J. (In Press). Web-based alcohol intervention for Maori university students: Double-blind, multi-site randomized controlled trial. *Addiction*.
- Lai, Y. P., Bruno, R., **Hall, W.**, Gartner, C., Ort, C., Kirkbride, P., Prichard, J., Thai, P., Carter, S., & Mueller, J. (In Press). Profiles of illicit drug use during annual key holiday and control periods: Wastewater analysis in an urban, a semi-rural and a vacation area. *Addiction*.
- Law, P., Cuskelly, M., & **Carroll, A.** (In Press). Young people's perceptions of family, peer, and school connectedness and their impact on adjustment. *Australian Journal of Guidance and Counselling*.
- Leahy, D., & **McCuaig, L.** (In Press). Disrupting the field: Health education in teacher education. In K. Fitzpatrick & R. Tinning (Eds.), *Health Education: Healthism and neoliberal bodies*. London: Routledge.
- Lee, N. M., Carter, A., Owen, N., & **Hall, W. D.** (2012). The neurobiology of overeating. *Embo Reports*, 13(9), 785-790.
- Leow, A., Macdonald, D., **McCuaig, L.**, & Hay, P. (In Press). Health-education policy interface: The implementation of Eat Well Be Active Policies in schools. *Sport, Education and Society*.
- Leung, J., Gartner, C., **Hall, W.**, Lucke, J., & Dobson, A. (2012). A longitudinal study of the bi-directional relationship between tobacco smoking and psychological distress in a community sample of young Australian women. *Psychological Medicine*, 42(6), 1273-1282.
- Leung, J., Gartner, C., **Hall, W.**, Lucke, J., & Dobson, A. (In Press). Smoking and mental health in young women - challenges in interpretation: A reply. *Psychological Medicine*, 43(2), 445-447.



# Publications & Grants

- Lim, S. S., Vos, T., Flaxman, A. D., Danaei, G., Shibuya, K., Adair-Rohani, H., . . . **Hall, W.**, . . . Ezzati, M. (2012). A comparative risk assessment of burden of disease and injury attributable to 67 risk factors and risk factor clusters in 21 regions, 1990-2010: A systematic analysis for the Global Burden of Disease Study 2010. *Lancet*, 380(9859), 2224-2260.
- Lucke, J., Partridge, B., & **Hall, W.** (In Press). Dealing with ennui: To what extent is cognitive enhancement a form of self-medication for symptoms of depression? *AJOB Neuroscience*.
- Lucke, J. C., & **Hall, W. D.** (2012). Exploring conditions under which it may be ethical to offer incentives to encourage drug-using women to use long-acting forms of contraception. *Addiction*, 107(6), 1049-1050.
- Lucke, J. C., & **Hall, W. D.** (2012). Is the non-medical use of prescription stimulants a problem in Australia? *Medical Journal of Australia*, 197(3), 145-145.
- Lucke, J. C., & **Hall, W. D.** (2012). Under what conditions is it ethical to offer incentives to encourage drug-using women to use long-acting forms of contraception? *Addiction*, 107(6), 1036-1041.
- Lynn, S., **Carroll, A.**, Cobham, V., & Houghton, S. (In Press). Peer relations and emotion regulation of children with emotional and behavioural difficulties with and without a developmental disorder. *Emotional and Behavioural Difficulties*.
- Macdonald, D., & **McCuaig, L.** (2012). Research principles and practices: Paving the research journey. In K. Armour & D. Macdonald (Eds.), *Research methods in physical education and youth sport* (pp. 16-28). London, UK: Routledge.
- Macdonald, D., & **McCuaig, L.** (In Press). Does my research look good in that? Problem, politics and processes when choosing social theory in research in physical activity. In L. Hunter, W. Smith & E. Emerald (Eds.), *Fields of Physical Culture: Encounters with and beyond Pierre Bourdieu*.
- Mathews, R., Carter, A., & **Hall, W.** (2012). Response to commentaries: Slowing down the rush to translation in personal genomics. *Addiction*, 107(12), 2081-2081.
- Mathews, R., Carter, A., & **Hall, W. D.** (2012). The implications of genetic research on alcohol dependence for dependence and treatment. In A. Chapman (Ed.), *Genetic research on addiction: Ethics, the law, and public health* (pp. 16-30). London: Cambridge University Press.
- Mathews, R., **Hall, W.**, & Carter, A. (2012). Direct-to-consumer genetic testing for addiction susceptibility: a premature commercialisation of doubtful validity and value. *Addiction*, 107(12), 2069-2074.
- Mathews, R., **Hall, W. D.**, & Carter, A. (2012). Public health implications of genetic research on addiction. In A. Chapman (Ed.), *Genetic research on addiction: Ethics, the law, and public health* (pp. 155-173). London: Cambridge University Press.
- McCuaig, L.** (2012). Salutogenesis and health literacy: Exploring the possibilities for a futures-driven home economics. *Journal of the HEIA*, 19 (2), 22-31.
- McCuaig, L.**, Coore, S., & Hay, P. (2012). Reducing dissonance along health-education fault-lines. *Asia-Pacific Journal of Health, Sport and Physical Education* 3(1), 3-15.
- McCuaig, L. A.** (2012). Dangerous Carers: Pastoral power and the caring teacher of contemporary Australian schooling. *Educational Philosophy and Theory*, 44(8), 862-877.
- Murray, C. J. L., Vos, T., Lozano, R., Naghavi, M., Flaxman, A. D., Michaud, C., . . . **Hall, W.**, . . . Lopez, A. D. (2012). Disability-adjusted life years (DALYs) for 291 diseases and injuries in 21 regions, 1990-2010: A systematic analysis for the Global Burden of Disease Study 2010. *Lancet*, 380(9859), 2197-2223.
- Olive, R., **McCuaig, L.**, & Phillips, M. (In Press). Women's Recreational Surfing: A patronising experience. *Sport, Education & Society*.
- Partridge, B., Bell, S., Lucke, J., Carter, A., & **Hall, W.** (In Press). Community beliefs among Australians about the acceptability of using medications to enhance cognitive and sporting performance. *American Journal of Bioethics: Neuroethics*.
- Partridge, B., Bell, S., Lucke, J., & **Hall, W.** (2012). Australian university students' attitudes towards the use of prescription stimulants as cognitive enhancers: Perceived patterns of use, efficacy and safety. *Drug and Alcohol Review*, 1-9.
- Partridge, B., Bell, S., Lucke, J., & **Hall, W.** (In Press). Getting ahead, keeping up and having a good time: Australian university students' attitudes towards the use of prescription stimulants as cognitive enhancers. *Drug and Alcohol Review*.
- Partridge, B., Lucke, J., & **Hall, W.** (2012). A comparison of attitudes toward cognitive enhancement and legalized doping in sport in a community sample of Australian adults. *American Journal of Bioethics - Primary Research*, 3(4), 81-86.
- Partridge, B., Lucke, J., & **Hall, W.** (2012). Public attitudes towards the acceptability of using drugs to treat depression and ADHD. *Australian and New Zealand Journal of Psychiatry*, 46(10), 958-965.
- Pham, B. N., Hill, P. S., **Hall, W.**, & Rao, C. (In Press). The evolution of population policy and implications for programming in Viet Nam. *Asian Population Studies*.
- Prichard, J., Lai, F. Y., Kirkbride, P., Bruno, R., Ort, C., Carter, S., **Hall, W. D.**, Gartner, C., Thai, P., & Mueller, J. (2012). Measuring drug use patterns in Queensland through wastewater analysis. *Trends & Issues in Crime and Criminal Justice*, 442, 8p.
- Room, R., & **Hall, W.** (In Press). Frameworks for understanding drug use and societal responses. In M. Hamilton, A. Ritter & T. King (Eds.), *Drug Use in Society*. Oxford: Oxford University Press.
- Room, R., & **Hall, W. D.** (2012). Population approaches to alcohol, tobacco and drugs: Effectiveness, ethics and interplay with addiction neuroscience. In A. Carter, W. D. Hall & J. Illes (Eds.), *Addiction neuroethics: The ethics of addiction neuroscience research and treatment* (pp. 247-260). Amsterdam: Elsevier.
- Ryan, M., Rossi, A., Hunter, L., Macdonald, D., & **McCuaig, L.** (2012). Theorising a framework for contemporary health literacies in schools. *Curriculum Perspectives*, 32(3).
- Sakellariou, T., **Carroll, A.**, & Houghton, S. (2012). Rates of cyber victimization and bullying among male Australian primary and high school students. *School Psychology International*, 33(5), 533-549.
- Sara, G., Burgess, P., Harris, M., Malhi, G. S., Whiteford, H., & **Hall, W.** (2012). Stimulant use disorders: Characteristics and comorbidity in an Australian population sample. *Australian and*

*New Zealand Journal of Psychiatry*, 46(12), 1173-1181.

**Saunders, J. B., & Room, R.** (2012). Enhancing the ICD system in recording alcohol's involvement in disease and injury. *Alcohol and Alcoholism*, 47(3), 216-218.

Shand, F. L., Campbell, G., **Hall, W.**, Lintzeris, N., Cohen, M., & Degenhardt, L. (In Press). Real-time monitoring of Schedule 8 medicines in Australia: Evaluation is essential. *The Medical Journal of Australia*.

Stapleton, J., West, R., Marsden, J., & **Hall, W.** (2012). Research methods and statistical techniques in addiction. *Addiction*, 107(10), 1724-1725.

Summerscales, J., Virk, A., & **Hall, W.** (In Press). A review of bast fibres and their composites: Part 3-Modelling. *Composites Part A-Applied Science and Manufacturing*, 44, 132-139.

Teesson, M., Farrugia, P., Mills, K., **Hall, W.**, & Baillie, A. (2012). Alcohol, tobacco, and prescription drugs: The relationship with illicit drugs in the treatment of substance users. *Substance Use & Misuse*, 47(8-9), 963-971.

Teesson, M., **Hall, W. D.**, Proudfoot, H., & Degenhardt, L. (2012). *Addictions* (2nd ed.). Hove: Psychology Press.

Teesson, M., Slade, T., Swift, W., Mills, K., Memedovic, S., Mewton, L., Grove, R., Newton, N., & **Hall, W.** (2012). Prevalence, correlates and comorbidity of DSM-IV Cannabis Use and Cannabis Use Disorders in Australia. *Australian and New Zealand Journal of Psychiatry*, 46(12), 1182-1192.

Vos, T., Flaxman, A. D., Naghavi, M., Lozano, R., Michaud, C., Ezzati, M., . . . **Hall, W.**, . . . Murray, C. J. L. (2012). Years lived with disability (YLDs) for 1160 sequelae of 289 diseases and injuries 1990-2010: A systematic analysis for the Global Burden of Disease Study 2010. *Lancet*, 380(9859), 2163-2196.

## Technical Reports, Resources and Other Staff Publications

**McCuaig, L.**, Carroll, K., Coore, S., Rossi, T., Macdonald, D., Bush, R., Ostini, R., & Hay, P. (2012). Developing health literacy through school based health education: Can reality match rhetoric? Phase I Report. Brisbane, Australia, The University of Queensland.

**McCuaig, L.**, & Nelson, A. (2012). Strategies and practices employed in education and health to engage Indigenous consumers. Australian Institute of Health and Welfare, Closing the Gap Clearinghouse Resource paper.

## Conferences and Presentations

Bower, J., & **Carroll, A.** (2012). *The Mindfields program: Barriers to effective implementation with at-risk youth*. Paper presented at the 1st Biennial Australian Implementation Conference, Melbourne, Australia.

Buckley, J., & **Kelly, J.** (2012). *Engaging Young People: What Works*. Paper presented at the 2012 Australian Winter School Conference, Australian Drug Foundation, Gold Coast, Australia.

**Carroll, A.**, & Bower, J. (2012). *Getting hooked on sports or the arts: Examining the connectedness of youth who participate in sport and creative arts activities*. Paper presented at the 1st

International Conference on Behavioral and Social Science Research (ICBSSR), Perak, Malaysia.

**Carroll, A.**, & Bower, J. (2012). *Invited Keynote Presentation - Changing directions, improving outcomes: The CAT-RPM and Mindfields as tools for positive youth development*. Paper presented at the International Graffiti Prevention Conference - the Writing's on the Wall, Brisbane, Australia.

Carter, A., Bell, S., Mathews, R., Lucke, J., & **Hall, W.** (2012). Neuroscientist and clinician perspectives on the use of neuroscience research on addiction. *Drug and Alcohol Review*, 31(Supplement 1), 32-32. Paper presented at the Australasian Professional Society on Alcohol and other Drugs (APSAD) Scientific Conference, Melbourne, Australia.

**Dingle, G.**, & Perryman, C. (2012). Social identification and support within the therapeutic community. *Drug and Alcohol Review*, 31(Supplement 1), 36-36. Paper presented at the Australasian Professional Society on Alcohol and other Drugs (APSAD) Scientific Conference, Melbourne, Australia.

**Hall, W.** (2012). *Addiction Neuroethics at UQCCR: Some current research*. Paper presented at the The University of Queensland Centre for Clinical Research Seminar, Brisbane, Australia.

**Hall, W.** (2012). *Anticipating possible adverse policy impacts of addiction neuroscience research*. Paper presented at the International Society for the Study of Drug Policy Conference, Canterbury, UK.

**Hall, W.** (2012). *Bradford Hill Seminar: Possible futures for tobacco control: high tech, low tech and no tech approaches*. Paper presented at the Institute of Public Health, Cambridge University, UK.

**Hall, W.** (2012). *Invited paper - Assessing social impacts of the claim that addiction is a brain disease*. Paper presented at the London School of Hygiene and Tropical Medicine, London.

**Hall, W.** (2012) *Invited paper - Bursting the neuroenhancement bubble*. Paper presented at the Centre for Biomedical Ethics, National University of Singapore, Singapore.

**Hall, W.** (2012). *Invited paper - Should we consider a trial of Deep Brain Stimulation as a treatment for addictive disorders?* Paper presented at the Brain Matters Conference, Singapore.

**Hall, W.** (2012). *Invited paper - Should we trial Deep Brain Stimulation as a treatment for addictive disorders?* Paper presented at the Centre for Medical Ethics and Department of Neuroscience, University of Bristol, UK.

**Hall, W.** (2012). *Invited paper - Waste water analyses of illicit drug use in the population: Technical and ethical issues*. Paper presented at the National Addiction Centre, Kings College London.

**Hall, W.** (2012). *NDARC at 25: Highlights from the first quarter century of research*. Paper presented at the 25th Anniversary Annual Symposium of National Drug and Alcohol Research Centre, University of New South Wales, Australia.

**Hall, W.** (2012). *Neuropsychiatry Case Conference - Drug-induced compulsive behaviour in Parkinson's patients treated with dopamine replacement therapy: Evidence and implications*. Paper presented at the Institute of Psychiatry, London.

**Hall, W.** (2012). *Symposium on Carter and Hall's Addiction Neuroethics*. Paper presented at the Centre for Values and Ethics,

# Publications & Grants

School of Philosophy, Macquarie University, NSW, Australia.

- Hall, W.** (2012). *Wellcome Lecture in Neuroethics - The brain disease model of addiction: Assessing its validity, utility and implications for public policy towards the treatment and prevention of addiction*. Paper presented at the Oxford Centre for Neuroethics, University of Oxford, UK.
- Hall, W.** (2012). *What does addiction neuroscience tell us about the responsibility of addicted persons for their drug use and crimes committed to fund their drug use?* Paper presented at The Mutual Challenges of the Neurosciences and Public Health, European Neuroscience and Society Network Conference, London.
- Lai, F. Y., Bruno, R., **Hall, W.**, Gartner, C., Ort, C., Kirkbride, P., Prichard, J., Thai, P.K., Carter, S., & Mueller, J. F. (2012). Illicit drug use between an annual key holiday and a control period: Wastewater analysis in a semi-rural, an urban and a vacation area. *Drug and Alcohol Review*, 31(Supplement 1), 20-20. Paper presented at the Australasian Professional Society on Alcohol and other Drugs (APSAD) Scientific Conference, Melbourne, Australia.
- McCuaig, L.** (2012). *Bridging the Health-Education Divide: Theory, Research, Practice*. Paper presented at the Tsukuba Summer Research Institute, Japan.
- McCuaig, L.** (2012). *Invited Keynote - Strengths-based approaches to HPE: Exploring the importance of curriculum, pedagogy and assessment*. Paper presented at the 2012 Taiwan Sport Teaching Symposium, Taiwan.
- McCuaig, L.** (2012). *Invited Presentation: The Strong are Lonely: A reflection on the mission of the critical HPETE pedagogue*. Paper presented at the Criticality in Health and Physical Education, Faculty of Education, The University of Auckland, Auckland, New Zealand.
- McCuaig, L.** (2012). *Symposium - St- Healthy pedagogies: The elephant in the national HPE curriculum*. Paper presented at the AARE-APERA Conference, Sydney, Australia.
- McCuaig, L., & Monsen, S.** (2012). *Symposium - Mentoring and socio-cultural factors*. Paper presented at the AARE-APERA Conference, Sydney, Australia.
- Perryman, C., & **Dingle, G.** (2012). Does interpersonal trauma influence clients' social connections and retention in residential treatment? *Drug and Alcohol Review*, 31, 56-56. Paper presented at the Australasian Professional Society on Alcohol and other Drugs (APSAD) Scientific Conference, Melbourne, Australia.
- Saunders, J., & Kypri, K.** (2012). Effectiveness of brief alcohol interventions: Evidence from studies of academic attainment, social problems and morbidity and mortality. *Alcoholism-Clinical and Experimental Research*, 36 (Supplement 2), 24A-24A. Paper presented at the 16th World Congress for the International Society for Biomedical Research on Alcoholism (ISBRA), Sapporo, Japan.
- Saunders, J. B.** (2012). Development of substance-related and addiction diagnoses for ICD11. *Alcoholism-Clinical and Experimental Research*, 36(Supplement 2), 19A-19A. Paper presented at the 16th World Congress for the International Society for Biomedical Research on Alcoholism (ISBRA), Sapporo, Japan.
- Saunders, J. B.** (2012). *The Essence of Addiction*. Paper presented at the Australian Doctors in Recovery Annual Conference, Manly, Australia.
- Saunders, J. B.** (2012). *Lecture and Case Presentation - Managing Patients with Substance Disorders: What is best practice in 2012?* Paper presented at the Royal Darwin Hospital, Darwin, Australia.
- Saunders, J. B.** (2012). *Practical Management of Alcohol and Drug Disorders: 2012 update*. Paper presented at the General Practice Continuing Education Program, Sydney, Australia.
- Saunders, J. B.** (2012). *Practical Management of Alcohol and Drug Disorders: 2012 update*. Paper presented at the Symposium on Substance Use Disorders (supported by AstraZeneca), Darwin, Australia.
- Saunders, J. B.** (2012). *An Update on Dual Diagnosis*. Paper presented at the AstraZeneca Symposium for Psychiatrists, Sydney, Australia.
- Saunders, J. B.** (2012). *An Update on Substance Abuse Management*. Paper presented at the Sydney Clinic Lecture Series, Sydney, Australia.



Projects	Funding Sources	Total Award	Investigators
<b>CYSAR Lead Projects</b>			
Gift from The University of Queensland Endowment Fund to the Centre for Youth Substance Abuse Research (from Graeme Wood and Andrew Brice)	The University of Queensland Endowment Fund	\$2,000,000, 5 years, (2013-2017)	<b>Connor</b> (on behalf of CYSAR)
Brief telephone interventions for reducing future alcohol use and related harm in young people accessing emergency departments	NHMRC Targeted Call for Mental Health Research Grant	\$702,461 4 years (2013-2016) Awarded 2012	<b>Hides</b> , Kavanagh, <b>Connor</b> , Daglish, Cotton, Barendregt, Witkiewitz, Young, <b>White</b>
Very young adolescents and substance use: Community and family vulnerabilities and healthy developmental transitions	ARC Discovery Project Grant	\$203,380 3 years (2013-2015) Awarded 2012	<b>Kelly</b> , Young, <b>Connor</b> , Williams, Baker, Bush
Revolutionising alcohol dependence treatment: Targeting individual genetic and psychological risk through Clinical Decision Support Systems	NHMRC Career Development Fellowship (Level 2, Clinical)	\$432,568 4 years (2012-2015)	<b>Connor</b>
From the laboratory to the classroom: Validation of an innovative laboratory model of adolescent impulsivity and alcohol use using a school-based randomised controlled trial	NHMRC Early Career Fellowship (TSP2, Clinical)	\$320,709 4 years (2012-2015)	<b>Gullo</b>
Genetics of impulsive alcohol use in young adults	UQ New Staff Start-Up Fund	\$12,000 2 years (2012-2013)	<b>Gullo</b>
Genes, biology and environment in the development of substance use and mental health disorders	NHMRC Career Development Fellowship (Level 2, Public Health)	\$424,920 4 years (2011-2014)	<b>Alati</b>
The aetiology of alcohol use disorders in adulthood: A generational perspective	NHMRC Project Grant	\$610,520 3 years (2011 – 2013)	<b>Alati</b> , Williams, Lind, Wray, Bor, Whitfield, Najman, Mamun, Clavarino, McIntyre
Evaluation of the Drink Safe Precinct Trial in Queensland	Queensland Government	\$96,600 1.5 years (2011-2012)	<b>Connor</b> , <b>White</b> , Kisely
Mindfulness in Education Research Collaboration: Shaping the Future of Education- Pilot Study	Philanthropic funding from John Fitzgerald (\$120,000), and the Graeme Wood Foundation (\$20,000), with support from The University of Queensland Faculty of Health Sciences (\$20,000)	\$160,000 2 years (2011- 2012)	<b>Connor</b>

# Publications & Grants

Projects	Funding Sources	Total Award	Investigators
Building a data collection tool assessing alcohol and other drugs for young people at-risk accessing services at Brisbane Youth Services	Brisbane Youth Service	\$5,900 2 years (2011- 2012)	<b>Quek, White, Connor</b>
Dynamic social systems and adolescent alcohol/tobacco use: A new cusp catastrophe model	ARC Discovery Project Grant	\$150,000 3 years (2010-2012)	<b>Kelly</b> , Haynes, Young
Illicit Drug Reporting System (IDRS)	Commonwealth Department of Health and Ageing	\$60,000/year	<b>Alati</b> (Queensland Principal Investigator)
Ecstasy and related Drugs Reporting System (EDRS)	Commonwealth Department of Health and Ageing	\$60,000/year Ongoing	<b>Alati</b> (Queensland Principal Investigator)
Preparing Queensland for the next generation of prevention science research: A community-based process for reducing delinquency and alcohol/other drug use	The University of Queensland Collaboration and Industry Engagement Fund	\$69,452 1 year (2010-2011) Extended to 2012	<b>Kelly, Connor, Alati, White, Quek, Carroll</b> , Queensland Department of Premier & Cabinet, Communities that Care Australia
Project SHIELD: A new approach to curbing risky trajectories of adolescent alcohol/tobacco use: A new tailored brief program for parents	NHMRC Project Grant	\$307,000 3 years (2009 – 2011) Extended to 2012	<b>Kelly</b> , McMahon, <b>Carroll</b> , Haynes, <b>Smith</b>
Alcohol-related emergency department admissions pre and post 'Alcopops' legislation	Internal Funds	n/a	<b>White, Connor, Quek</b> , Kisely, Hall, Toumbourou
Evaluation of 'Choices' in North Queensland	Internal Funds	n/a	<b>White, Quek</b> , Low, Brown, Dow, <b>Connor</b>
Risk factors for substance misuse amongst young people in Australia	Internal Funds – public access dataset	n/a	<b>Kelly, Connor, White, Alati, O'Flaherty, Chan</b>
Queensland Schoolies Project	Internal Funds	n/a	<b>Quek, White, Kelly, Connor</b>
Youth alcohol and drug service utilisation data	Internal Funds	n/a	<b>Quek, White, Connor</b>
Polydrug use: National Drug Strategy Household Survey 2007	Internal Funds	n/a	<b>Quek, White, Chan, Kelly, Baker, Connor</b>
Development of the Iphone drink monitoring application	Internal Funds	n/a	<b>White, Connor, Hides</b> , Fitz-Walter, Tjondronegoro, Kavanagh
Communities that Care: A community-based process for reducing delinquency and alcohol/other drug use	Internal Funds	n/a	<b>Kelly, Connor</b> , Toumbourou, Williams, Smith, <b>Salom, Alati, White, Quek, Baker, Carroll</b>





Projects	Funding Sources	Total Award	Investigators
<b>CYSAR Collaborative Projects (Funds not held by CYSAR)</b>			
The outcomes of adolescents and young adults who experience hallucinations: A birth cohort study	NHMRC Project Grant	\$536, 597 3 years (2013-2015) Awarded 2012	Scott, McGrath, Najman, <b>Alati</b> , Mamun, Clavarino
Randomised controlled trial of a telephone delivered social well-being and engaged living (SWEL) intervention for disengaged youth at risk of mental health and other adverse outcomes in urban and rural Australia	NHMRC Targeted Call for Mental Health Research Grant	\$1,305,235 6 years (2013-2018) Awarded 2012	<b>Hides</b> , Stain, Baker, Jackson, Lenroot, Paulik, McElduff, Wolfenden
Rates, patterns and predictors of long-term outcome in a treated first-episode psychosis cohort	NHMRC Project Grant	\$1, 344, 905 6 years (2013 – 2018) Awarded 2012	Cotton, McGorry, Mackinnon, Herrman, Gleeson, <b>Hides</b> , Foley
The development of automated advanced data analysis techniques for the detection of aberrant patterns of prescribing controlled drugs	ARC Grant Matched funding from Queensland Health	\$150, 000 (+\$150, 000) 4 years (2012-2015)	Gallagher, Wiles, <b>Connor</b> , Love-day, Ballantyne
Promoting perinatal mental health and wellbeing: Development and evaluation of screening and intervention programs for both parents, using the Internet and text messages (SMSs)	<i>beyondblue</i>	\$399, 836 4 years (2012-2015)	Kavanagh, Hamilton, Marshall, Milgrom, Rowe, Fisher, Witt-kowski, Scuffman, Davis, Walsh, Chang, White, <b>Hides</b> , Daniels
Social Wellbeing and Engaged Living (SWEL) of rural Australian youth	NSW Health	\$77,317 1 year (2012)	Stain, <b>Hides</b> , Jackson, Lenroot, Paulik-White, Baker, McElduff
Understanding alcohol and drug-related injury among young people in Queensland	IHBI CYSAR Internal Grant	\$15, 000 1 year (2012)	McKenzie, <b>Hides</b> , Limborg & Barker
Leveraging mobile phone technology to influence responsible drinking behaviour	ARC Discovery Project Grant	\$140,000 3 years (2011-2013)	Drennan, <b>Connor</b> , Kavanagh, Tjondronegoro, Previte, Fry, <b>White</b>
Healthy body, healthy mind: An exercise intervention for the treatment of youth depression	<i>beyondblue</i> Ad Hoc Strategic Research Funding	\$94, 547 3 years (2011-2013)	Callister, Kelly, <b>Hides</b> , Baker, Yong
Preventative online programs/tools for problematic alcohol and other drug use in young people	Young and Well Collaborative Research Centre	\$178,544 3 years (2011-2013)	<b>Hides</b> , Kavanagh, Tjondronegoro, Johnson

# Publications & Grants

Projects	Funding Sources	Total Award	Investigators
Test of a new, technologically-assisted motivational intervention for substance misuse in first episode psychosis	IHBI CYSAR Research Development Grant Scheme 2012	\$14,998 1 year 2013	Kavanagh, Connolly, <b>Hides</b> , <b>Quek</b> , Tjondronegoro, Dark, <b>White</b> , Andrade, May
Improving social engagement of rural 'at risk' youth: A randomised effectiveness trial of a telephone delivered Cognitive and Dialectical Behaviour Therapy Intervention	Australian Rotary Health Mental Health Grant	\$70, 162 3 years (2010-2012)	Stain, <b>Hides</b> , Jackson, Lenroot, Paulik, Baker, McElduff
Development and evaluation of a binge-drinking internet program for young people	Victorian Department of Health	\$510,000 3 years (2010-2012)	Kavanagh, Young, Shochet, Drennan, Stallman, Buckley, <b>White</b> , Proctor, <b>Quek</b>
Etools for Well-being, Young and Well-Cooperative Research Centre (YAW-CRC) Program	Inspire Foundation + partner contributions	\$27m (Inspire Foundation) \$87m (partner contributions) 5 years (2011-2016)	<b>Hides</b> , Kavanagh, Young, Shochet, Tjondronegoro, Johnson, Drennan
Brief interventions to reduce alcohol use and related problems and injuries in young people accessing emergency departments	IHBI Human Health and Wellbeing Grant	\$30,000 2 years (2011-2012)	<b>Hides</b> , Kavanagh, Daglish, <b>Connor &amp; White</b>
Pubertal transitions in mental health and behaviour: The PHASE-A study of social role and lifestyle transitions	NHMRC Project Grant	\$1,572,018 5 years (2011-2015)	Patton, Allen, Sawyer, Olds, Degenhardt, Viner, Williams, Bayer, Olsson, <b>Alati</b>
Genetic and environmental contributions to the life course of the common mental disorders	NHMRC Project Grant	\$1,474,526 4 years (2011-2014)	Najman, Williams, Wray, Breen, Venter, Clavarino Mamun, <b>Alati</b> , O'Callaghan, Bor
Early origins, progression and aetiology of obesity, metabolic syndrome and diabetes: A 30 years follow-up study	NHMRC Project Grant	\$1,151,675 4 years (2010-2013)	Mamun, O'Callaghan, Najman, <b>Alati</b> , Williams, Clavarino, McIntyre
Early origins, progression and aetiology of obesity, metabolic syndrome and diabetes	NHMRC Project Grant	\$173,547 4 years (2010-2013)	Mamun, O'Callaghan, Williams, Najman, <b>Alati</b> , Clavarino, McIntyre
The efficacy and cost effectiveness of a BMI compared to a BMI + Contingency Management in young cannabis users	Vice Chancellor's Senior Research Fellowship Grant, QUT	\$20, 000 4 years (2010-2013)	<b>Hides</b>



Projects	Funding Sources	Total Award	Investigators
Vice Chancellor's Senior Research Fellowship	Queensland University of Technology	\$300, 000 3 years (2010-2012)	<b>Hides</b>
Understanding patient flow bottlenecks and patterns from hospital information systems data	UQ Collaboration and Industry Engagement Fund	\$75,000 2 year (2010-2012)	Gallagher, Wiles, <b>Connor</b> and Queensland Health
The Ecstasy Check-up: A multi-site trial of a brief intervention for ecstasy use among regular ecstasy users	NHMRC Project Grant	\$443, 126 3 years (2010-2012)	Copeland, Norberg, <b>Hides</b> , McKetin
Evaluation of internet-based treatments for co-morbidity of alcohol disorders and depressive mood	NHMRC Project Grant	\$684,000 3 years (2009-2011) Extended to 2013	Kavanagh, Klein, Austin, Proudfoot, Lambkin, <b>Connor</b> , Young, <b>White</b>
Beyond motherhood - the menopausal transition: A 27 year follow up of the mental health of mothers as they enter middle age	NHMRC Project Grant	\$1,675,988 4 years (2008-2012)	Clavarino, Williams, <b>Alati</b> , Maman, Najman, Bor

Projects	Funding Sources	Total Award	Investigators
<b>CYSAR Honorary, Affiliate and Adjunct Staff Projects</b>			
Educating for healthy citizens: The health work of teachers in Australian schools	ARC Discovery Project	\$295,709 3 years (2013 – 2015) Awarded 2012	MacDonald, Tinning, Rossi, Mangan, <b>McCuaig</b>
Comfortably numb: Understanding and addressing difficulties in emotion regulation in adults with substance use disorders	UQ Early Career Researcher Grant	\$20 000 1 year (2013) Awarded 2012	<b>Dingle</b>
Randomised controlled trial of a financial counselling intervention and smoking cessation assistance to reduce smoking in socioeconomically disadvantaged groups	NHMRC Project Grant	\$1,951,193 3 years (2012-2014)	Mattick, Martire, Bonevski, Borland, Doran, <b>Hall</b> , Farrell
Pharmaceutical opioid prescription for chronic pain in Australia: Trajectories of prescribing, risk of adverse events, and predictors of harm	NHMRC Project Grant	\$1,041,601 3 years (2012-2014)	Degenhardt, <b>Hall</b> , Cohen, Lintzeris, Nielsen, Bruno
Addiction as a brain disease: Impact on smokers' beliefs about cessation	ARC Discovery Project	\$143,624 3 years (2012-2014)	<b>Hall</b> , Gartner, Partridge, Carter, Lucke
Electronic intervention for hazardous alcohol consumption among hospital out-patients	NHMRC Project Grant	\$353,035 3 years (2012- 2014)	Kypri, Johnson, <b>Saunders</b> , Saitz, Attia

# Publications & Grants

Projects	Funding Sources	Total Award	Investigators
Investing in our Disadvantaged Youth: New School-wide Approaches to Understanding and Improving School Engagement and Social Connectedness	ARC Linkage and Industry Partners	\$388,843; \$307,843 (ARC); \$81,000 (Industry Partners) 3 years (2012-2014)	<b>Carroll</b> , Gillies, van Kraayenoord, Bower
The Logan House Project: Monitoring the process of psychosocial change in residential treatment for substance use disorders	Lives Lived Well Funding Renewal	\$27 577 2 years (2012-2013)	<b>Dingle</b>
Family Planning Queensland Workforce Development Evaluation Project	Family Planning Queensland	\$20 000.00 2 years (2012 – 2013)	Leahy, <b>McCuaig</b>
The relationship between alcohol use and mental disorders from adolescence to young adulthood: Longitudinal analyses from a large Australian cohort study	Australian Rotary Health Grant	\$38,456 1 year (2012)	Degenhardt, Patton, <b>Hall</b> , Swift and O'Loughlin
Mental disorders and the social transitions of adulthood: A 20-year follow-up of the Victorian Adolescent Health Cohort Study	NHMRC Project Grant	\$426,879	Patton, Degenhardt, Ollson, Carlin, <b>Hall</b>
Structural Relations of Loners, Loneliness, and Antisocial Behaviour in Children and Adolescents: Building a Conceptual Model for effective Interventions	ARC Discovery	\$212,399 3 years (2011-2013)	Houghton, <b>Carroll</b> , Hattie, Ang, Tan
Loneliness in Children: Building a Model for Mental Health Promotion Healthway	Western Australian Health Promotion Foundation	\$275,000 3 years (2011-2013)	Houghton, Wood, <b>Carroll</b> , Hattie
Setting the Standard: Evidence for Curriculum Renewal in Health Education Teacher Education	University of Southern Cross Teaching and Learning Small Grant Scheme	\$10,000 1 year (2011-2012)	Leahy, <b>McCuaig</b> , Mayer
Ipswich Centre for Healthy Communities: Health Literacies in Schools Pilot	UQ Pick Your Partners Internal Funding	\$25, 000 2 years (2011-2012)	<b>McCuaig</b> , Rossi, Macdonald, Bush, Ostini, Hay, Carroll
Ultra-high-performance liquid chromatography ion trap mass spectrometer to develop new capabilities in environmental and human toxicology	ARC Linkage Infrastructure, Equipment and Facilities Grant	\$240,000 2 years (2011-2012)	Mueller, Gaus, <b>Hall</b> , Sly, Keller, Ayoko, Ristovski, Harden, Smith, Brodie, Lewis, Hawker, Kookana, Roach, Robillot, Mortimer, Golding, Bartkow
Developing the Mindfields Program for High School Students	Pathfinder Proof of Concept Grant, Uniquist (UQ)	\$45,000 2 years (2010-2011) Extended	<b>Carroll</b>
Addiction neuroethics: The ethical and public policy implications of genetic and neuroscience research on addiction	NHMRC Australian Fellowship	\$4, 000, 000 5 years (2009-2013)	<b>Hall</b>



Angela White, Lake-Hui Quek, Hannah Thomas, Kara Pasmore and Maria Plotnikova at a CYSAR Research Meeting.



Angela White, Lake-Hui Quek and Genevieve Dingle (via Skype) having fun at a CYSAR Research Meeting.



Therese Price, Nathan St John and Matthew Gullo at 'journal club' – one of the professional development activities for the Summer Research Program students.



A research meeting between Angela White, Maria Plotnikova and Peter Baker.



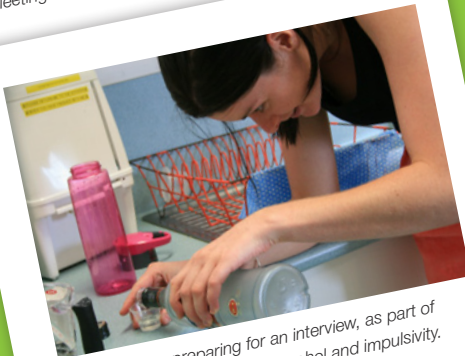
Maria Plotnikova and Angela White working hard on the Drink Safe Precinct Trial Evaluation.



Lake-Hui Quek presenting at the Walk on the Wildside Conference.



Gary Chan, Dayna Smith, Jason Connor, Therese Price, Nathan St John and Angela White at a CYSAR Research Meeting



Therese Price preparing for an interview, as part of Matthew Gullo's lab trial on alcohol and impulsivity.



Matthew Gullo enjoying a laugh and a piece of cake at Therese' farewell party.



# CYSAR

## ANNUAL REPORT

# 2012

CYSAR would like to thank the many individuals and organisations who contributed to our Centre throughout 2012. If you would like to find out more about CYSAR, including any of the research listed here, please contact us at:

### CONTACT DETAILS

---

#### **CYSAR**

K Floor

Mental Health Centre

Royal Brisbane and Women's Hospital

HERSTON QLD 4029

---

Telephone: (07) 3346 4834

Facsimile: (07) 33655488

---

