



CYSAR

Centre for Youth  
Substance Abuse Research

# 2016

ANNUAL REPORT

03 Director's Report  
Professor Wayne Hall, UQ

05 Deputy Director's Report  
Professor Leanne Hides, QUT

06 Strategic overview

08 Key achievements

09 Centre highlights

13 Features

18 Community engagement

19 Staff profiles

24 Student profiles

28 Advisory board

29 Major partners  
and collaborations

31 Appendices

# Director's report

During 2016 CYSAR continued to benchmark its performance against recommendations from its 2014 external five-year review, a strategic planning exercise held in 2015, and the expectations of the major donor, Graeme Wood. These were to focus on internal collaborations within the Centre, enhance unity of purpose across the UQ and QUT nodes, identify priorities for funding and strengthen our relationships with organisations in service delivery, advocacy, and policy.

Specific targets set by CYSAR for 2016 were to refresh its Scientific Advisory Board membership, heighten the public impact of our research, increase our research student numbers, increase our engagement with the addictions field and NGOs, and raise the public profile of the Centre in evidence based advocacy for youth.

The new Board members appointed in 2016 included the CEO of the Queensland Network of Alcohol and other Drug Agencies (QNADA), the peak organisation representing the non-government alcohol and drug sector, the Director of Dovetail, an initiative of Queensland Health supporting the youth alcohol and other drug sector, and the Queensland Editor of The Conversation, an independent media outlet that publishes commentary and analysis by Australian researchers.

In 2016 the Centre attracted five new PhD students. It now has eleven research higher degree students, the majority of whom hold competitive scholarships. In 2016 CYSAR further attracted two new postdoctoral fellows to the Centre. At year's end Senior Research Assistant Megan Weier was awarded her doctoral degree in the School of Psychology at UQ. This achievement topped an outstanding year's performance at CYSAR by Dr Weier in research and publication, establishing and leading the CYSAR higher degree student club, and active engagement with local youth service and advocacy groups. She left CYSAR at the end of 2016 to take up a postdoctoral fellowship at the prestigious National Drug and Alcohol Research Centre at UNSW.

## INTERNAL COLLABORATIONS



*enhance unity*



PURPOSE

ACROSS UQ & QUT



IDENTIFY

PRIORITIES

FOR FUNDING



STRENGTHEN

RELATIONSHIPS



Lives Lived Well is the auspicing body for the non-government drug and alcohol treatment sector in Queensland. In 2016 Lives Lived Well agreed to provide funding for a five year professorship at UQ (with matching funding from UQ) to undertake research on the treatment of comorbidity between addictive and other mental disorders. The Centre's Deputy Director was the successful candidate after a competitive process for this appointment-see the Deputy Director's report for details. CYSAR's success contributed to making UQ an attractive environment for industry funding in the addictions area.

CYSAR researchers continued to publish in leading international peer reviewed journals and its academic and media profile increased during 2016. In February, a series of three papers was published in The Lancet Psychiatry on adolescent drug use; CYSAR authors included Dr Weier and myself. These summarised the global evidence on the epidemiology of adolescent drug and alcohol use and related harm, described effective approaches to treating adolescent substance use and outlined the most effective ways to prevent adolescent drug use and reduce drug-related harm. In April WHO published a commissioned review on the adverse health effects of cannabis that I led. It was published in time for the United Nations General Assembly Special Session on the World Drug Problem in April.

During this period of heightening attention on liberalisation of cannabis laws in the US and the potential impact on young people, I visited major US research institutes in California and Washington State to find out more about the early effects of legalisation. I was welcomed as an internationally influential policy expert and invited to give talks on the topic. In November I gave the annual lecture of the Society or the Study of Addiction (one of the world's oldest societies on addiction) in York in the UK on the future of the international drug treaties. In Australia I was invited to join state government and expert external panels on medical cannabis. I also advocated for evidence based policies on alcohol and tobacco harm reduction in invited commentaries in leading journals and in invited expert evidence to Federal and state government parliamentary inquiries.

In 2016 CYSAR researchers led by UQ Research Fellow Dr Gary Chan used cutting edge statistical analysis and methods in demonstrating the public policy value of government investment in drug and alcohol surveys and monitoring of trends in illicit drug use through wastewater analysis. CYSAR collaborated across UQ and QUT and with researchers at leading national institutes in publishing scientific papers that attracted national media attention.

Dr Chan and Associate Professor Adrian Kelly were lead authors on papers that demonstrated the positive impact of reduced parental alcohol supply on underage drinking. Dr Matthew Gullo, whose promotion to Senior Research Fellow took effect in 2016, advanced his research program to target impulsivity in alcohol dependence, leading a team that now includes 6 PhD students, putting in a strong showing at the 8th World Congress of Behavioural and Cognitive Therapies in Melbourne.

CYSAR's NHMRC research fellows and their students conducted translational harm reduction research in publically funded alcohol and drug treatment services and prevention programs in schools, as well as family and community based strategies to prevent substance use uptake in adolescents in disadvantaged communities. CYSAR students were lead authors on several scientific papers, highlighting the Centre's attractive and beneficial research environment for young researchers in an increasingly competitive field. Jason Connor, promoted to Professor in 2016, was the lead author on a Lancet seminar on Alcohol Use Disorders, our most common mental health problem. He continued to foster strong interdisciplinary collaborations that included PhD students and postdoctoral fellows in clinical psychology, genetics, epidemiology, information technology and medicine.

After eight years at CYSAR, Professor Rosa Alati took up a UQ Development Fellowship at the UQ Institute for Social Science Research. In this position Rosa will continue her highly regarded work in addiction and life course epidemiology.

At the end of 2016 after three years as Professor and Director of CYSAR, I returned the Directorship to Jason Connor, CYSAR's Inaugural Director. I felt that I had fulfilled the objectives of my Directorship in developing the established research capacity of the centre staff by helping them to successfully publish in high impact journals, to obtain competitive research funding, to attract more PhD students to the Centre, and to encourage the highest standards of evidence based advocacy, achievement, and service. In 2017 I will take up a 0.4 fractional appointment with the Centre that will allow me to continue to mentor Centre staff, students, and to collaborate with colleagues at UQ and in other leading research institutes in Australia and the United Kingdom.



**Professor Wayne Hall**  
**University of Queensland**

# Deputy Director's report

For the second year running, Professor David Kavanagh received a prestigious scientific award for his work, becoming one of only seven scientists in Queensland to be installed into the Australian Academy of Social Sciences. Professor Kavanagh and I both received QUT Vice Chancellor's Performance Awards. Our eTools for Wellbeing project, funded by the Young and Well Cooperative Research Centre, was honoured by The Mental Health Services Conference Inc. of Australia and New Zealand in the category Mental Health Promotion or Mental Illness Prevention. This award enabled Dr Catherine Quinn to attend the TheMHS annual conference in Auckland, New Zealand. In 2016, Dr Quinn also received her first Early Career Researcher grant to evaluate the Red Frogs Schoolies seminar program, which is delivered to over 30,000 Year 12 students nationally (see page 8 for more details).

QUT also welcomed Dr Dominique de Andrade to the team as a new post-doctoral research fellow in 2016. Dr de Andrade has a strong background in criminology and a PhD on alcohol-related violence. Over the next 2 years, Dominique will be working with the CYSAR team to determine how to reduce alcohol-related violence in Drink Safe Precincts as well as recidivism among juvenile offenders with substance use issues.

The QUT team took on a number of new advocacy and service roles in 2016. Professor Kavanagh became a member of the Queensland Mental Health and Drug Advisory Council which provides advice to the Queensland Mental Health Commission on mental health and substance misuse issues. He also became a member of the Digital Mental Health Advisory Committee, Commonwealth Department of Health and Ageing. In my role as the QLD representative of the Australasian Professional Society on Alcohol and Other Drug Use (APSAD) Council, I joined the advisory committee of the Queensland Network of Alcohol and other Drug Agencies (QNADA), the peak organisation representing the non-government alcohol and drug sector in Queensland. I also developed a new partnership between APSAD and the Queensland Health INSIGHT Training and Education Unit aimed at increasing APSAD members' access to professional development opportunities and lifting the national profile of the INSIGHT webinar program. In support of this partnership, APSAD has provided funding for three high profile national speakers to present seminars in Brisbane each year for national broadcast.

The CYSAR team had a strong presence at the 8th World Congress of Behavioural and Cognitive Therapies in Melbourne, with QUT staff involved in six symposia.

Several members of the team also attended the Australasian Professional Society on Alcohol & Other Drugs (APSAD) National Conference in Sydney, with all three QUT based PhD students presenting their work. All three students are progressing well with their PhD projects, with two due to submit in 2017.

In 2016, I was awarded a 5-year NHMRC Senior Research Fellowship entitled *Early Interventions for Primary and Comorbid Substance Use in Young People: Engagement, Innovation, Technology and Translation*. I was also the successful applicant for the 5-year Lives Lived Well Professor of Alcohol, Drugs and Mental Health position at The University of Queensland. Lives Lived Well is the ideal clinical and research partner for my research fellowship and CYSAR, as the major provider of addiction prevention and treatment services across Queensland including both residential and community based programs.

Due to my move to The University of Queensland, this will be my last report as the QUT Deputy Director of CYSAR.

Over the past 6 years, I have thoroughly enjoyed the opportunity to help establish the first youth focused substance use research centre in Australia. Professor David Kavanagh will take up the Deputy Director role in 2017, ensuring CYSAR's strengths in eHealth and clinical trials research will continue to flourish.

The QUT team would like to thank Professor Wayne Hall for his inspiring leadership in transforming CYSAR into a world class research centre over the past 3 years.

We would also like to warmly welcome Professor Jason Connor back as the Director of CYSAR, and are looking forward to working with Professors Hall, Connor and the rest of the team to continue bringing CYSAR's vision to fruition.



**Professor Leanne Hides,**  
**Queensland University of Technology**

**We welcome David Kavanagh as the new CYSAR Deputy Director, and look forward to continue working with him over the coming years.**





# Strategic overview

## Mission statement

- To promote the health and well-being of young people by increasing Australia's capacity to respond effectively to any harm arising from substance use
- Finding solutions, improving futures, partnering with young people

## Aims

- Understand the pathways to harmful substance use
- Research on innovative ways of preventing and treating substance misuse
- Support development and evaluation of potential evidence-based improvements to youth substance use services
- Influence state and national approaches to the prevention and treatment of problematic substance use by young people through
  - information dissemination
  - policy refinement and public advocacy
- Involve young people in the Centre's research

FINDING

SOLUTIONS



IMPROVING  
FUTURES

PARTNERING

WITH

YOUNG  
PEOPLE







BROAD  
RANGE

RESEARCH PROGRAMS

*making*

DIRECT



TANGIBLE

IMPACTS ON

SUBSTANCE USE

*in*

YOUNG PEOPLE

The Centre for Youth Substance Abuse Research (CYSAR) is the only youth-focused substance use research centre in Australia.

Established with philanthropic funding in partnership with QUT, this initiative seeks to understand, prevent and enhance evidence-based strategies, programs and policies for youth substance use. Since 2008, CYSAR has leveraged research funds three times the initial contribution. The University of Queensland Endowment Fund support, combined with the University's commitment, has established UQ as the institution of choice for industry and non-government organisation funding of research in this area. UQ has recently attracted separate philanthropic funding to support a Chair in Alcohol, Drugs and Mental Health from Lives Lived Well (LLW), the Queensland auspicing body for the non-government drug and alcohol treatment sector, with a strong focus on young people and families.

CYSAR has developed broad-range research programs that are making direct and tangible impacts on substance use in young people.

Programs are strategically targeted at different levels, from supporting individuals and families who are in need of help, to engaging in policy and population research to enhance knowledge of youth substance use and inform health policy. The Centre has received continuous Australian Research Council and National Health and Medical Research Council funding since it was founded and currently hosts 11 PhD students. These students represent Australia's next generation of youth substance abuse researchers.



The Centre has two of the world's most highly recognised alcohol and drug researchers on staff, Professor Wayne Hall and Professor John B. Saunders (Honorary). Both have been identified in the top 0.5% of researchers worldwide. They are actively involved in Centre research and youth advocacy and provide mentoring to junior and senior staff.

CYSAR is an ideal research environment for cutting-edge research that produces real change in the health of young Australians.

# 2016 Key Achievements

131

PEER-REVIEWED

PUBLICATIONS



*an average of*

18

PAPERS PER FULL-TIME STAFF MEMBER

27

BOOK  
CHAPTERS



COMMISSIONED REPORT



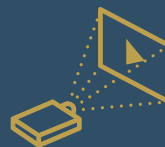
17

CONFERENCE PRESENTATIONS

AND



INVITED TALKS



NEW GRANTS

AND

\$5,445,794



new funding



22

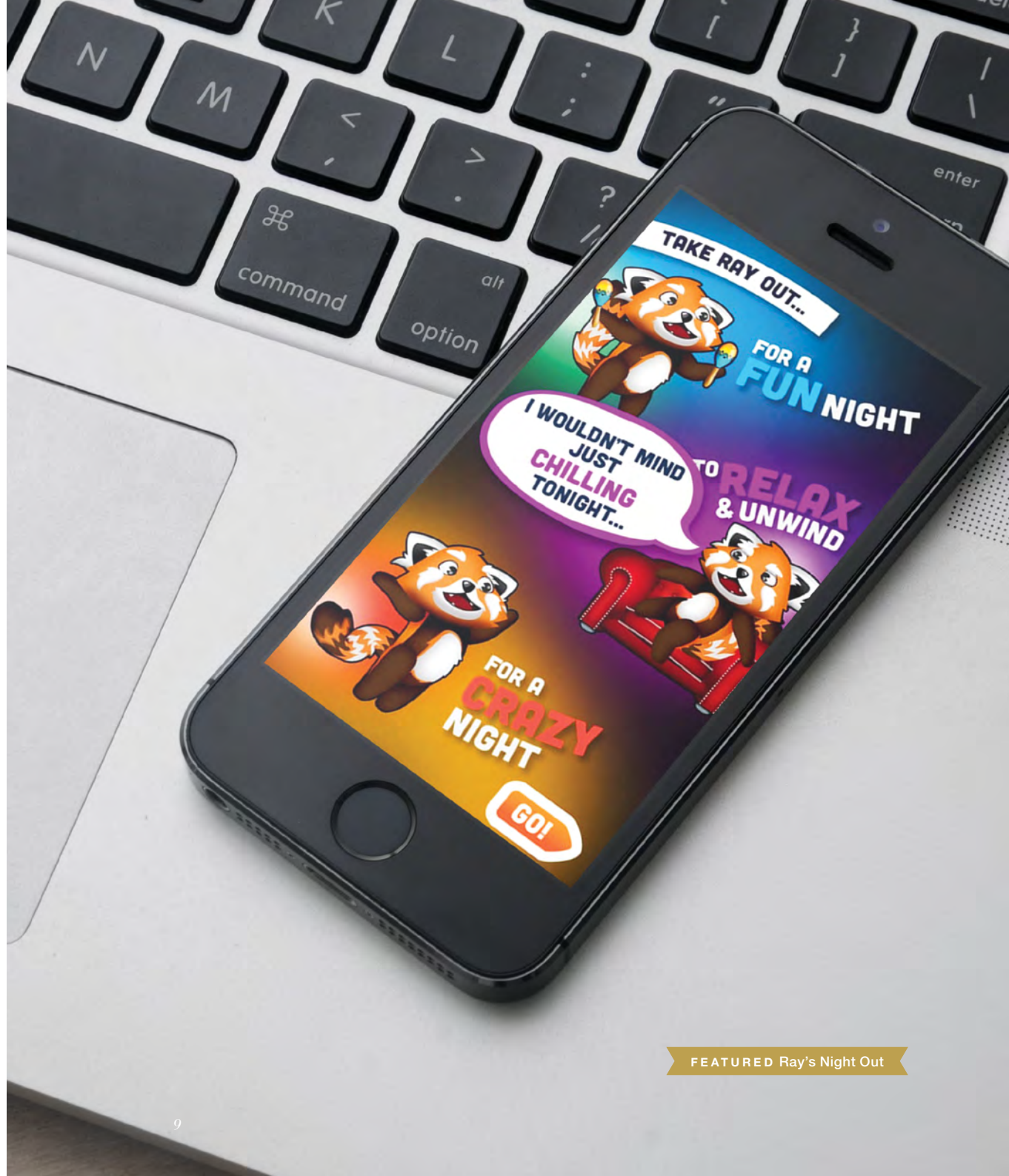
ON-GOING PROJECTS



# Centre highlights

## eTools for Wellbeing wins best project

In 2016, the Young and Well Cooperative Research Centre was wound up after 5 years (2011–2016) of operation. The aim of the Centre was to research the role technology could play in improving the mental health and wellbeing of young people. CYSAR Deputy Director Professor Leanne Hides led the QUT arm of the Young and Well CRC in developing a mobile app – ‘Ray’s Night Out’ – to assist teenagers in learning safe drinking behaviours in a fun and interactive environment. In 2016, the innovative work led by Professor Hides and QUT was recognised at the Mental Health Services Conference of Australia and New Zealand, and was awarded the best promotion or prevention project. The award recognises the work by Professor Hides and her team in engaging with young people to design effective and useful tools to prevent harms associated with alcohol use.



FEATURED Ray's Night Out



## Early career success

CYSAR postdoctoral research fellows Dr Catherine Quinn and Dr Gary Chan both exhibited their research capacity and potential in 2016 with the award of early career development awards.

Dr Quinn was awarded the QUT Institute of Health and Biomedical Innovation Early Career Researcher Development Scheme award. The funded project aimed to evaluate two school-based interventions which aim to increase safe partying and drinking behaviours by school leavers at Schoolies (read more on page 13).

Dr Chan was awarded the UQ Early Career Researcher Grant, with a project titled 'Informing future policies on cannabis in Australia. Lessons from new trends in the USA and from the history of tobacco control.' The project aims to look at the health impacts of certain new types of cannabis products (e.g. cannabis concentrates). These products have been gaining popularity among users in the US after the legalization of medical cannabis.

Dr Chan's project also aims to examine the trend of cannabis use in Australia, and investigate if the trends are the same across different socioeconomic groups. The findings of these studies can have important impact on both Australian drug policy, and how drug treatment and prevention interventions are administered to people who have problematic patterns of cannabis use. Gary says: "Australia now faces a revival of long-running debates on cannabis policy. In the four US states that have legalised recreational cannabis use, products such as Butane Hash Oil (BHO) have become readily available. As BHO is 10 times more potent than herbal cannabis, we need to understand how this product is used and by whom. Analysis of user profiles of BHO in the light of health inequities seen in past trends in tobacco use will help Australian policy makers minimise the impact on public health."

## Staff awards and recognition

Staff awards consistently exhibit the valuable work that staff at CYSAR are conducting that have an impact on prevention, intervention and policy for alcohol and other drug research.

- Professor David Kavanagh was elected a Fellow of the Academy of the Social Sciences in Australia
- Professor Leanne Hides was awarded an NHMRC Senior Research Fellowship
- Professors David Kavanagh and Leanne Hides received QUT Vice Chancellor's Performance Awards
- Professor Wayne Hall delivered the Society for the Study of Addiction Annual Lecture (SSA, founded 1884) in York, UK following a year of invited lectures and participation in expert panels at internationally leading US and UK research institutes at John Hopkins University, Columbia University, RAND Corporation, University of Washington, Seattle; and Kings College London

EXAMINES *the* **HEALTH IMPACTS** *AND* *the trends* *OF* CANNABIS PRODUCTS



## Farewell

Professor Rosa Alati has been part of the Centre since its beginnings in 2009. Professor Alati has contributed to the drug and alcohol research field by conducting longitudinal research following maternal alcohol use and child outcomes. The MUSP (Mater University Study of Pregnancy) is now following the outcomes of children in the study who are now in their 30's, and investigates the impact of intimate partner violence and relationship quality, antisocial behaviour, and the role of other types of addiction, while also tracking the development of alcohol use disorders over the lifespan. Professor Alati has attracted over \$10 million in competitive funding, and has contributed significantly to the multidisciplinary field of drug and alcohol research.

**\$10M** in **COMPETITIVE FUNDING**

At the end of 2016, Professor Alati accepted a UQ Development Fellowship at the UQ Institute for Social Science Research. The staff at CYSAR wish Rosa all the best for her fellowship, and look forward to continuing to work with her in the future.

## Three-minute thesis

The Three Minute Thesis (3MT) competition was first started at UQ in 2008, and has since become an international competition and opportunity for PhD students to develop and communicate their research project in a way that is both succinct and clear to a general audience. Transforming an 80,000 word thesis dissertation into a 3 minute speech can seem daunting, but competitors report the challenge to be a valuable experience to assist in refining their ideas as they write their thesis.

PhD student Kiri Patton was the winner of the 2016 UQ School of Psychology 3MT competition. Kiri's talk, titled '*Can we teach adolescents psychological skills that will reduce hazardous alcohol use?*' presented the work she has been undertaking delivering mindfulness training to school students, with the aim of developing better coping and response strategies when they have the opportunity to consume alcohol. Kiri went on to represent the School of Psychology at the Faculty of Health and Behavioural Sciences semi-final.







**ABOVE** In 2016 Professor Saunders led publication of the 2nd Edition of Addiction Medicine, part of the successful Oxford Specialist Handbooks series. The 1st Edition was widely regarded internationally as the most complete and concise clinical guide for up-to-date practical assessment, diagnosis, treatment and management of addictive disorders. The 2nd Edition includes contributions from addiction professionals across 25 countries, including Professor Jason Connor, Professor Wayne Hall and Associate Professor Gerald Feeney from CYSAR.

## Thanks, John!

John B. Saunders is one of Australia's most eminent scientists and brings significant expertise in generating research capacity. He has contributed significantly to public debate and policy change in the field of substance use disorders, including youth substance abuse.

John has made an invaluable contribution to the Centre over many years. He has mentored and guided senior staff as they established the centre's national and international youth drug addiction research profile. He worked with the Centre in identifying key issues and challenges concerning youth substance use research, and how these challenges can be constructively and innovatively addressed.

John is a professor and consultant physician in internal medicine and addiction medicine, with appointments at The University of Queensland (CYSAR) and University of Sydney, and with several private hospital groups, including the Wesley Hospitals, St. John of God Health Care, and South Pacific Private Hospital in New South Wales, Australia.

After a period as an academic and medical specialist in the UK, John took up an appointment at Royal Prince Alfred Hospital and the University of Sydney in 1984. He was appointed to the Chair of Alcohol and Drug Studies at The University of Queensland in 1996, and was Director of Alcohol and Drug Services for the Royal Brisbane and Prince Charles Hospitals and Brisbane North community services until 2005.

His career as a clinician, service director, researcher and academic in internal medicine and addictive disorders now extends back 40 years. He has extensive clinical experience in hospital and community settings and in the public and private health sector, and currently has a large consulting practice. His research has included screening and early diagnosis, brief interventions, assessment instruments, susceptibility to alcohol- and drug-related disorders, alcohol- and drug-related liver disease and alcohol-related heart and circulatory disease, the treatment of alcohol, opioid and psychostimulant dependence, and medical education in addiction studies. John has published four books and over 300 peer-reviewed scientific papers, reviews and book chapters.

He has worked with the World Health Organization since the early 1980s and was responsible for developing the Alcohol Use Disorders Identification Test (AUDIT) questionnaire. He is a member of WHO's Expert Advisory Panel on Substance Abuse, the Expert Committee on Drug Dependence (2012), and the ICD 11 Substance-Related and Addictive Disorders Workgroup. He was Co-Chair of the DSM-5 Substance Use Disorders Workgroup from 2003 to 2008. He is Founding and Emeritus Editor-in-Chief of Drug and Alcohol Review, and Section Editor for Addictive Disorders for Current Opinion in Psychiatry. He has been a member of many state and federal Australian Government committees, including the Australian National Council on Drugs (2001-2007).

# Features

## Quikfix dissemination

The Quikfix early intervention model of care is aimed at increasing identification and referral of young people with alcohol and other drug injuries and illness. Nationally, 10,000 young Australians present to EDs with alcohol-related injuries and illnesses each month. Telephone-delivered BIs provide an innovative, youth friendly and accessible way of delivering treatment. In 2016, the Drug and Alcohol Brief Intervention (DABIT) teams at Logan, Robina and Gold Coast hospitals were trained in the delivery of the QuikFix intervention in order to trial its use as part of routine clinical care. This project was funded by the NHMRC.

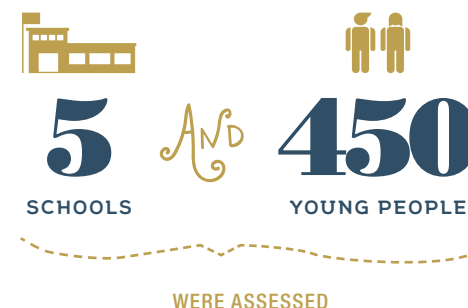
\*\*\*\*\*

**CYSAR STAFF** Professor Leanne Hides, Professor David Kavanagh, Professor Jason Connor

## Evaluation of two interventions to increase safe behaviours at Schoolies

In November each year, tens of thousands of final year high school students attend Schoolies Week on the Gold Coast to celebrate the completion of their schooling. Many young people engage in risk-taking behaviours including alcohol and other drug use at Schoolies. Red Frogs, a not-for-profit organization, provides a range of diversionary activities at the Schoolies festival to increase positive experiences and reduce the risk of negative outcomes for young people at the event. Red Frogs also provides school seminars to over 30,000 Grade 12 students across Australia to educate them about safe partying behaviours. The effectiveness of these seminars on young people's alcohol knowledge, use and related-harm at Schoolies week is yet to be evaluated.

Dr Catherine Quinn, under the mentorship of Professor Leanne Hides, has been undertaking a pilot study to evaluate the effectiveness of the Red Frogs school psychoeducation seminar. The seminar is being compared to a control condition, and an enhanced version of the seminar incorporating the critical reasoning components of social cognitive theory and the evidence-based "Ray's Night Out" alcohol harm reduction app.



Five schools and over 450 young people were recruited into the study and completed baseline assessment prior to Schoolies. Follow-up, immediately post-Schoolies and three months later immediately following orientation-week at universities, has been completed with over 70% of students completing at least one follow-up assessment. The efficacy of the original and enhanced version of the seminar will be assessed relative to a no seminar control condition in terms of: 1) The primary outcomes of alcohol knowledge, use and related harms and harm minimisation techniques; and 2) The secondary outcomes of psychological distress, illicit drug use and wellbeing.

////////////////////////////////////

**CYSAR STAFF** Dr Catherine Quinn, Professor Leanne Hides

## Development of short-form adolescent Drinking Expectancy and Drinking Refusal Self-Efficacy Questionnaires

Targeting cognitive change processes in adolescents can assist in developing more effective prevention and treatment approaches to reduce alcohol related harm. CYSAR PhD student Kiri Patton is interested in secondary school students and how they navigate opportunities to consume alcohol.

Kiri says "I am interested in three risk factors for adolescent alcohol use - how impulsive we are, what we think will happen when we drink, and how confident we feel saying no to alcohol, that is, impulsivity, alcohol expectancies, and drinking-refusal self-efficacy, and how targeting these factors through psychological intervention may be useful for prevention."

In collaboration with Professor Sharyn Rundle-Thiele and Dr Timo Dietrich from Griffith University, Kiri's project has involved developing and testing two shortened versions of an established adult alcohol expectancies and drinking self-refusal scale, specific to adolescents. The scale was originally developed by Professor Ross Young, and is currently being tested on over 2,000 Queensland Secondary School Students.

"We hope the scales will be useful in research and possibly for risk screening in adolescent populations," Kiri said. "In already drinking clinical populations they may be useful as indicators of maintaining unhelpful alcohol-related cognitions and thus possible treatment target areas."

CYSAR STAFF AND STUDENTS Ms Kiri Patton, Dr Matthew Gullo, Professor Jason Connor





## Changing Australian drinking with social marketing programs



LEFT Timo Dietrich

(Photo credit: ABC Online)

Dr Timo Dietrich, Professor Jason Connor, and Dr Matthew Gullo, led by Professor Sharyn Rundle-Thiele from Griffith University, have just completed an alcohol prevention RCT with 2500 QLD secondary school students, average age 14. Positive outcomes were achieved for drinking and change across key outcomes. The trial was funded by an ARC Linkage grant with Catholic Education. Components of the intervention are now included in 183 secondary schools in QLD.

On the basis of this successful trial, a subsequent ARC linkage grant has been awarded. The new program is called Blurred Minds and uses gamification to inform students about alcohol in an engaging and interactive way. Centred on user feedback and design, the Blurred Minds Program delivers five lessons that aim to change expectancies, attitudes and behavioural intentions towards binge drinking; reduce susceptibility to peer pressure; and equip students with strategies on how to abstain or moderate their alcohol consumption. Starting in 2017 Blurred Minds will also deliver a program to parents.



VR example

The project has also developed a world's first virtual reality house party which allows students to experience an immersive 'chase your own adventure' simulation. This prototype was co-produced with the Griffith Film School (Live Lab), Learning Futures and ICT's Idea Lab. The VR House Party can be downloaded free of charge from the Google and Apple store. The new Blurred Minds Program is being rolled out as a cluster stratified randomised controlled trial that will be delivered to adolescents and their parents in 36 Queensland Catholic Education schools throughout 2017.

CYSAR STAFF Dr Timo Dietrich, Professor Jason Connor, Dr Matthew Gullo

### Lancet Psychiatry series

CYSAR Director, Professor Wayne Hall was one of three leading authors on a commissioned series for the high-impact Lancet Psychiatry, for a series on youth substance use. The series covered the increasing global priority for understanding youth substance use, and carried out a systematic review on the effectiveness of evidence for prevention, early intervention, harm reduction, and treatment of problematic drug and alcohol use in young people. Considering the range of evidence that exists, ranging from interventional to epidemiological is necessary to determine what the biggest challenges health practitioners, researchers, and policy makers are facing when aiming to reduce problematic youth substance use. The series was released to coincide with the 2016 UN General Assembly on the World Drug Problem in the United States.

XXXXXXXXXXXXXXXXXXXXXXXXXXXX

**CYSAR STAFF** Professor Wayne Hall,  
Dr Megan Weier

### Teaching

Teaching and guest lecturing to university students is a valuable way to both disseminate the work being done at CYSAR, and attracting new students and affiliations to the Centre. In 2016, staff engaged in several teaching engagements that exhibited the broad range of skills that are utilised at the Centre.

- Dr Gary Chan developed teaching materials on advanced statistical modelling techniques and gave a series of intensive training workshops to over 40 research higher degree students and academics in 2016. Gary gave the first five-day workshop in the school of psychology in February on advanced statistical methods ('A gentle introduction to R: using R for basic statistics and multilevel modelling'), and was brought back by popular demand for a second session in December.
- Dr Chan was also appointed as a statistical advisor at the School of Psychology and has provided specialist advice on statistical modelling to over 20 researchers in 2016. On the basis of his teaching abilities, Gary was asked to teach a high-level statistics course to the UQ school of psychology clinical Masters students in 2017.
- Professor Wayne Hall gave two lectures to the Masters of Public Health Psychology course regarding developments in cannabis and tobacco policy
- Professor Jason Connor lectured for both Australian Psychological Society accredited psychology postgraduate programs, and also presented a guest lecture to UQ second year Nursing and Midwifery students
- Dr Megan Weier gave guest lectures to third year health psychology, and second year Nursing and Midwifery.
- Dr Matthew Gullo gave a guest lecture to fourth-year psychology Honours students, applying his research to the scientist-practitioner model.
- Dr Catherine Quinn presented lectures to both undergraduate and post-graduate psychology student at QUT, including an all-day session teaching Cognitive Behaviour Therapy interventions for addictive behaviours
- Associate Professor Adrian Kelly, Dr Gullo, Dr Quinn and Dr Chan all supervised fourth year Honours students



BETWEEN 2004–2013

*there was a significant*

**DROP**



[ PARENTS SUPPLYING ALCOHOL ]



*TO THEIR CHILDREN*



**THIS  
COINCIDED**

*with*

*reduced adolescent*

**ALCOHOL USE**

### Tracking trends: changes to parental supply of alcohol to underage drinkers

Parents are a common source of first alcohol for teenagers. There is debate about whether parents providing alcohol to their teenagers under the legal drinking age contributes to later alcohol related harm. To better understand this relationship, analysing trends in parental supply in alcohol over a number of years can give insight into whether behaviours are changing.

Associate Professor Adrian Kelly, along with other staff members at CYSAR, published a report in BMC Public Health, titled 'Parental supply of alcohol in Australian minors: an analysis of six nationally representative surveys spanning 15 years'. The study found that, between 2004 and 2013, there was a significant drop in the number parents supplying their children alcohol. This change coincided with a downwards trend of adolescent experimentation, quantity, and frequency of alcohol use. The results of this study were of interest to both the academic and general community. The findings were featured heavily in national media outlets such as ABC Online, SBS, The Sydney Morning Herald, Brisbane Times, and magazines such as The Australian Women's Weekly. The findings of the study can be used to assist in policy making decisions regarding how adolescents access alcohol.

**CYSAR STAFF** Associate Professor Adrian Kelly, Dr Gary Chan, Dr Megan Weier, Dr Catherine Quinn, Dr Matthew Gullo, Professor Jason Connor, Professor Wayne Hall



# Community engagement

As part of CYSAR's mission, engaging with the community – both individuals and organisations – remains an imperative part of the research process. In 2016, staff continued their outreach and service work within the community through a number of initiatives:

- Professor David Kavanagh became a member of the Queensland Mental Health and Drug Advisory Council. He also became a member of the Digital Mental Health Advisory Committee, Commonwealth Department of Health and Ageing.
- Professor Leanne Hides joined the Advisory Committee of the Queensland Network of Alcohol & other Drug Agencies (QNADA) in her capacity as Queensland representative of the Australasian Professional Society on Alcohol and Other Drug Use (APSAD) Council.
- Professor Wayne Hall was invited to join an expert group at the National Drug and Alcohol Research Centre in a review of evidence on the medical value of cannabinoids for the Therapeutic Goods Administration to inform the Commonwealth's regulation of medical cannabis.
- Professor Wayne Hall was invited to join the Queensland Medicinal Cannabis Guidance Reference Group by the Prevention Division of the Queensland Department of Health.
- Professor Wayne Hall gave a UQ School of Psychology Seminar in August on 'What can we learn from USA cannabis policy experiments?'
- Dr Matthew Gullo was an invited speaker at the August 2016 Brisbane Boys College Parents & Friends Annual Forum on Drugs and Alcohol.
- Dr Megan Weier conducted focus groups with Brisbane Youth Service and Dovetail to evaluate current youth drug and alcohol services in Queensland. She was also invited to be part of a panel organised by the UQ Student Union to talk with students about current Queensland and Australian drug laws and harm reduction strategies.
- Dr Megan Weier assisted Brisbane Youth Service with the design, roll out, analysis and reporting of a revised drug and alcohol survey that can be completed by BYS clients on a mobile or tablet device. The online survey also allows for more secure storage of data, and tracking long-term clients and changes in their substance use over time.



YOUNG PEOPLE

ARE

SMOKING  
LESS

DRINKING  
LESS

and

USING FEWER  
ILLICIT DRUGS

IN 2016 COMPARED TO 2001

SOURCE Australian Institute of Health and Welfare National Drug Strategy Household Survey

# Staff profiles



**Wayne Hall, *Director***

Wayne is Professor, Director and Inaugural Chair of CYSAR and a Visiting Professor at the National Addiction Centre, Institute of Psychiatry, Kings College London; The London School of Hygiene and Tropical Medicine; and National Drug and Alcohol Research Centre at UNSW. He was formerly an NHMRC Australia Fellow in addiction neuroethics at The University of Queensland Centre for Clinical Research (UQCCR) and The Queensland Brain Institute (QBI) (2009-14); Professor of Public Health Policy in the UQ School of Population Health (2005-09); Director of the Office of Public Policy and Ethics at the Institute for Molecular Bioscience (2001-05) at UQ; and Director of NDARC at UNSW (1994-2001).

Over the past 20 years Wayne has worked in the fields of addiction, mental health and public health, addressing socially important and intellectually challenging scientific and policy questions that lie at the intersection between human biology and history. In 2001, he moved to UQ to work on the public policy and ethics of new biotechnologies arising from the sequencing of the human genome. He has advised the World Health Organization on: the health effects of cannabis use; the effectiveness of drug substitution treatment; the scientific quality of the Swiss heroin trials; the contribution of illicit drug use to the global burden of disease; and the ethical implications of genetic and neuroscience research on addiction.

////////////////////////////////////

EMAIL [w.hall@uq.edu.au](mailto:w.hall@uq.edu.au)



**Leanne Hides, *Deputy Director***

Leanne is an ARC Future Fellow and clinical psychologist with expertise in the assessment and treatment of primary and co-occurring substance use disorders in young people. Her main areas of research interest include the efficacy of early interventions for primary and comorbid substance misuse, including the development of web- and mobile phone-based interventions.

Professor Hides concluded her tenure as Deputy Director of CYSAR in 2016, to move to UQ to take up the Lives Lived Well Professor of Alcohol, Drugs & Mental Health position.

////////////////////////////////////

EMAIL [l.hides@uq.edu.au](mailto:l.hides@uq.edu.au)



## Rosa Alati

Rosa is an NHMRC Career Development Fellow (Level 2) with a background in Indigenous health research and the life course epidemiology of alcohol and mental health disorders. Since the award of her PhD in 2004, she has made significant contributions to the fields of maternal substance use and offspring outcomes and cognate aspects of developmental and life course epidemiology. Her research interests range from methodological issues in longitudinal studies, to the developmental origin of health, mental health and addictions. She has published on the impact of maternal alcohol use on offspring cognition and alcohol use, birth weight on depression and prenatal factors for neuro-development. She has an international reputation in these fields. She is a visiting professor at Oxford and Bologna Universities. In 2008, Rosa won the Australian 2008 National Drug and Alcohol Award for 'Excellence in Research' in recognition of her long term contribution to the field of substance use research.

Rosa has received national and international competitive grants of up to \$10 million to pursue her research. She is a principal investigator of the Mater University Study of Pregnancy (MUSP) and other large epidemiological studies, to investigate causal pathways to substance use and mental health outcomes in populations. One international study is the highly regarded ALSPAC study based in Bristol (UK), where upon she studies the effects of prenatal alcohol consumption on child neuro-developmental growth. Other studies are the 'PASSPORT' study of prisoners and the 'CATS' study of pubertal transitions. Other areas of current investigation include fetal influences on the development of alcohol and mental health disorders and persistence of alcohol use problems in adulthood.

At the end of 2016, Professor Alati moved to the UQ Institute for Social Science Research to take up a UQ Development Fellowship.

XXXXXXXXXXXXXXXXXXXXXXXXXXXXXXXXXXXX

EMAIL [r.alati@uq.edu.au](mailto:r.alati@uq.edu.au)



## Dominique de Andrade

Dr Dominique de Andrade is a justice-health researcher with a particular focus on substance misuse in high risk populations and in high risk settings. Dominique is continuing her research on substance misuse in young prisoners. She has also been working with a multi-university research team on the Queensland Alcohol-related Violence and Night-Time Economy Monitoring (QUANTEM) project. Headed by Prof. Peter Miller (Deakin University) and Dr. Jason Ferris (University of Queensland), the team is conducting a comprehensive evaluation of the impact of the Queensland Government's Tackling Alcohol-fuelled Violence Policy on alcohol-related harms and alcohol consumption patterns in Queensland. Dominique's contribution is specifically related to examining the impact and utilisation of police banning orders and premise-based ID scanners.

////////////////////////////////////

EMAIL [d.deandrade@qut.edu.au](mailto:d.deandrade@qut.edu.au)



## Gary Chan

Gary is a UQ Early Career Research Fellow. Gary joined CYSAR in 2010 as a PhD student with Associate Professor Adrian Kelly as the primary supervisor. Gary has a background in both psychology and statistics, and has a strong desire to make a meaningful contribution in preventing problematic and risky drinking during adolescence. His PhD project focused on the developmental trajectories of alcohol use, and examined how risk and protective factors in family, peers and school contributed to the initiation and escalation of alcohol use.

In 2014, following the awarding of his PhD Dr Chan was appointed as a Postdoctoral Research fellow in CYSAR. His current projects focus on the epidemiology of polydrug use, and its development over the course of adolescence and young adulthood.

-----

EMAIL [c.chan4@uq.edu.au](mailto:c.chan4@uq.edu.au)





### Jason Connor

Professor Jason Connor is the Director of the Centre for Youth Substance Abuse Research as of 2017.

Jason is a clinical psychologist by training and a Fellow of the Australian Psychological Society (APS). He has specialist membership in the APS Health and Clinical Colleges. Jason commenced his academic career after being awarded a National Health and Medical Research Council (NH&MRC) doctoral scholarship (PhD, 2002) for research into substance use disorders. Since moving from full-time clinical practice to academia, he has successfully combined teaching responsibilities with research publishing over 150 peer reviewed papers and receiving \$10 million in research funding as Chief Investigator.

His main research focus is substance use disorders. Research areas include substance use assessment and treatment, novel psychological models of problem drinking, addiction epidemiology and the prevention of youth substance abuse.

Jason has received awards for his research (NH&MRC Career Development Fellow; Australian Psychological Society Early Career Research Award), teaching (National Carrick Institute Citation for Excellence in Teaching and Learning) and service to the profession of psychology (Australian Psychological Society Health College Award of Distinction). In addition to his academic roles, he has an appointment with Queensland Health and continues to offer clinical services.

---

EMAIL [jason.connor@uq.edu.au](mailto:jason.connor@uq.edu.au)



### Timo Dietrich

Timo has a joint position with Griffith University and The University of Queensland as a Postdoctoral Research Fellow. He holds a Doctoral degree in Social Marketing from Griffith University which examined how segmentation and co-design can improve the effectiveness of school-based alcohol prevention programs. The consumer insights gained throughout his PhD are now being used to develop a new range of alcohol prevention programs aimed at Australian high school students. Timo is currently collaborating on an alcohol and drug intervention project with Queensland Catholic Education Commission, a project to increase hand washing in Malawi with UNICEF, is the project manager for SocialMarketing4Change.com, and he is developing a pilot project to improve financial decision making of young adults. Timo has published over 23 refereed papers and he has been personally acknowledged by the Queensland Premier for assistance to officers of the Department of Education, Training and Employment during consultation and development of alcohol education resources in 2014.

---

EMAIL [t.dietrich@griffith.edu.au](mailto:t.dietrich@griffith.edu.au)



### Matthew Gullo

Matthew is a Senior Research Fellow and Clinical Psychologist who conducts research on impulsivity and substance use. His research focuses on the cognitive and neuropsychological mechanisms that convey risk for substance abuse and how they can best be targeted in treatment. Recently, Matthew has been leading research that is investigating the application of the first human laboratory model of impulsive drinking in adolescents, to delineate key therapeutic mechanisms in cognitive-behavioural treatments. The model helps identify better ways to target early intervention and prevention efforts. Matthew is supported by an NHMRC Early Career Fellowship (Tier 2, Clinical). He maintains his clinical practice as a Visiting Senior Clinical Psychologist at the Alcohol and Drug Assessment Unit, Princess Alexandra Hospital, and holds an Honorary Research Fellowship at the School of Psychology at The University of Queensland. Matthew has collaborations and partnerships with international organisations such as Yale University (USA), University of Liverpool (UK), Goldsmiths College (UK), and Plymouth University (UK).

---

EMAIL [m.gullo@uq.edu.au](mailto:m.gullo@uq.edu.au)



## Adrian Kelly

Adrian is a clinical psychologist with expertise in the development, prevention and treatment of youth substance abuse and related problems. His primary interest is in how family interactions and emotional climate contribute to and protect young people from alcohol and drug-related harm. Adrian is also examining how the characteristics of communities, schools and families interact to predict substance use experimentation. Adrian has received approximately \$4million in first or senior authored nationally competitive research grants, including several Australian Research Council (ARC) Discovery Projects, National Health & Medical Research Council (NHMRC) Projects, and NHMRC Fellowship funding (Career Development Award). His ARC funded research programs highlight key windows of risk for the development of substance use, and the role of parents and family environments in protecting children through high-risk transitions.

Adrian was awarded Joint Winner of the prize for Excellence in Research, National Drug and Alcohol Awards (NDAA's, 2013). The award was presented at Parliament House by the Alcohol and other Drugs Council of Australia (ADCA). The award recognised Adrian's research on the social determinants of alcohol and other drug use during early adolescence, and his contributions to research on prevention and early intervention programs.

EMAIL [a.kelly@uq.edu.au](mailto:a.kelly@uq.edu.au)



## Catherine Quinn

Catherine Quinn is a Postdoctoral Research Fellow at the Centre for Youth Substance Abuse Research at Queensland University of Technology. Catherine completed her Ph.D. in Psychology at Macquarie University, where she received the Macquarie University Research Excellence Scholarship. Her PhD focused on two social cognitive processes (moral disengagement and anticipated social outcomes) and how they relate to adolescents' engagement in underage drinking and experience of alcohol-related harm.

Catherine also recently completed her Clinical Masters in psychology. Through her clinical training Catherine worked with younger and older adults who have abused alcohol and other drugs at St John of God Hospital. She also worked in community health placements and acute adolescent units with high-risk youth, who were often disengaged from school, depressed, and engaging in risky behaviours including self-harming and substance misuse.

Past experiences include working as a Youth Officer at Juniperina Juvenile Justice Centre and working at Ltyentye Apurte Community Education Centre, Northern Territory, re-engaging a group of young aboriginal girls in education. Catherine is also actively involved in the Mitchell Youth Leadership Forum, an annual forum for student leadership groups. In addition to building leadership skills, this forum provides mediation between the students and key school staff, enhancing communication and advocating for student ideas on ways to improve their school environment.

EMAIL [catherine.quinn@uq.edu.au](mailto:catherine.quinn@uq.edu.au)



## Megan Weier

Megan is a senior research assistant working at the Centre under the primary supervision of Professor Hall. She has a background in psychology, and is trained in both quantitative and qualitative research methods. Her involvement with the Centre has included large-scale epidemiology research on cannabis use in Australian young people using the National Drug Strategy Household Survey; writing about the policy implications of both alcohol and medicinal cannabis laws; conducting qualitative analysis of the experience of e-cigarette users, family members of addicted individuals, and interviews with addicted individuals themselves; and has been responsible for the management of the production and editing of the annual report and website content.

In 2016, Megan completed and was conferred her PhD through UQ School of Psychology. Her thesis focused on modern transitions into and understandings of adulthood.

EMAIL [m.weier1@uq.edu.au](mailto:m.weier1@uq.edu.au)



## Sarah Yeates

Sarah is a senior research assistant and executive assistant to the director at the Centre. Sarah's background in Library and Information Science assists in the publication and dissemination of research findings from the Centre. Sarah is also a PhD candidate through UQ School of Communication and Arts, focusing on alcohol promotion and policy.

EMAIL [s.yeates@uq.edu.au](mailto:s.yeates@uq.edu.au)



ABOVE Professor Leanne Hides (left), with Lives Lived Well's research manager Sandy Sacre and Lives Lived Well's Clinical Director David Mooney. (Photo credit: Lives Lived Well)



ABOVE David Kavanagh presenting his keynote address at the 2016 Australian Psychological Society's Annual Congress. (Photo credit: APS)



# Student profiles



**Laura Anderson**

Laura is a PhD candidate at the University of Queensland, and holds a Research Training Program Scholarship and a Children's Hospital Foundation top-up scholarship. Her PhD research investigates the psychological factors that convey risk for unsafe sexual behaviours during adolescence, particularly impulsivity and social cognition. Laura is passionate about translating research into practical efforts, and hopes to evaluate a prevention program to reduce rates of unsafe sex during adolescence. Laura is also a tutor at UQ.

////////////////////  
**CYSAR ADVISORS** Dr Matthew Gullo and  
Dr Genevieve Dingle

**EMAIL** [laura.anderson@uq.net.au](mailto:laura.anderson@uq.net.au)



**Jason Coates**

Jason is enrolled in a combined Masters (Clinical Psychology) and PhD at The University of Queensland. Jason's PhD research looks at psychological mechanisms which perpetuate alcohol dependence and may consequently be targeted by psychological interventions. The project focuses on mechanisms such as craving, impulsivity, and expectancies related to alcohol consumption. In his PhD, Jason is collaborating with the Alcohol and Drug Assessment Unit at the Princess Alexandra Hospital where he is able to collect information pertaining to these mechanisms and how they relate to treatment outcome. Ultimately the intention of Jason's work is to facilitate personally tailored interventions for the patient based on the most influential psychological mechanisms maintaining alcohol misuse.

-----  
**CYSAR ADVISORS** Professor Jason Connor,  
Dr Matthew Gullo, Dr Genevieve Dingle

**EMAIL** [j.coates@uq.edu.au](mailto:j.coates@uq.edu.au)



**Daniel Demant**

Daniel has been a PhD candidate with Queensland University of Technology (QUT) since September 2014 and holds a CYSAR PhD Scholarship. Daniel possesses an undergraduate degree in Social Work and Applied Social Sciences as well as a Master in Public Health with a major in Epidemiology and Research Methods. Daniel's PhD project, 'Substance Use among Lesbians, Bisexuals, and Gays: The Influence of Social Identities and Community Attitudes,' focuses on substance use among lesbian, gay, bisexual and transgender (LGBT) people with a focus on social identities and communities. Daniel will conduct three studies for his PhD. In the first study, he will undertake a thematic analysis of qualitative interviews with LGBT adolescents and young adults, to gain a deeper insight into interactions between different social identities and crowd affiliations and substance use and abuse in LGBT young people.

His second study will focus on stakeholders of the LGBT community such as health care workers, LGBT venue owners/operators and political activists to identify the potential relationship between the different subgroups of the community and their influence on substance use. These studies will be used to develop research hypotheses for a third quantitative study in the form of an online questionnaire. Daniel's study will also compare the frequency of use of 17 different types of drugs between LGBT young people with their heterosexual counterparts worldwide using data from the Global Drug Survey. Daniel also works as a research assistant and tutor for QUT.

////////////////////////////////////  
**CYSAR ADVISORS** Professor Leanne Hides

**EMAIL** [d.demant@uq.edu.au](mailto:d.demant@uq.edu.au)



## Nicole Guse

Nicole is a Senior Psychologist in the Mental Health, Alcohol, Tobacco and Other Drugs Service (MHATODS) and Forensic Adolescent Mental Health, Alcohol and Other Drugs Service (FAMHAODS). She is a registered psychologist and, in 2014, was awarded a Masters in Criminology from Griffith University. Nicole is completing an MPhil (part-time) at CYSAR in which she will investigate the role of impulsivity and social cognition in methamphetamine use among adolescents involved in the juvenile justice system. Her research seeks to develop and evaluate a new treatment program designed specifically for this population.



**CYSAR ADVISORS** Dr Matthew Gullo, Professor Jason Connor

**EMAIL** nguse1@hotmail.com

## Charmaine Jensen

The term 'pharmaceutical cognitive enhancement (PCE)' is generally defined as the non-medical use of prescription stimulants (e.g. Ritalin) by healthy people, in an attempt to enhance alertness, focus, memory, mood and other cognitive functions. Charmaine is doing her PhD as part of an ARC-funded research study that aims to describe the extent and nature of PCE among Australian university students. The studies that make up this research project are designed to provide an understanding of how common PCE is in student populations, who engages in it, with what frequency, in what circumstances, and with what effects. Three studies will be conducted in this project in an attempt to reduce the dearth of knowledge regarding PCE amongst Australian tertiary students.

It will do this by: interviewing tertiary students with the objective of describing the student context within which PCE takes place; conducting an online survey of tertiary students to estimate the prevalence of PCE and explanatory factors associated with PCE behaviours; and having in-depth semi-structured interviews with student PCE users to understand the patterns and consequences of their use, their attitudes towards PCE and motivations for use.



**CYSAR ADVISORS** Professor Wayne Hall, Dr Gary Chan

**EMAIL** c.jensen2@uq.edu.au



## Zoë Papinczak

Zoë completed a Bachelor of Psychological Science (Honours) at the University of Queensland in 2013. She commenced a PhD in Psychology at the University of Queensland in January 2016. Her research is supported by the Centre for Youth Substance Abuse Research, under the supervision of Dr. Matthew Gullo and Professor Jason Connor.

Zoë's PhD – entitled "A Bio-Social Cognitive Model of Youth Cannabis Dependence" will examine the role of several psychological and biological mechanisms involved in cannabis dependence and identify how they interact to predict treatment outcomes. Her research aims to identify key variables which can be targeted during psychological interventions with cannabis dependent youth, and test whether this can serve to improve treatment outcomes.



**CYSAR ADVISORS** Dr Matthew Gullo and Professor Jason Connor

**EMAIL** z.papinczak@uq.edu.au



### Kiri Patton

Kiri Patton is undertaking a concurrent Masters of Clinical Psychology and PhD program at The University of Queensland which she started in 2014. Her PhD furthers previous work by the Centre on the impact of impulsivity and alcohol-related cognitions in youth on their current and future alcohol use. As a component of her PhD, Kiri will develop and implement a school-based intervention targeting these factors and evaluate potential effects on adolescent alcohol misuse. Kiri hopes that the combination of her clinical and research skills will help her PhD project to facilitate positive real-world outcomes for teenagers by reducing possible alcohol-related harm.

**CYSAR ADVISORS** Dr Matthew Gullo and Professor Jason Connor

**EMAIL** [k.patton@uq.edu.au](mailto:k.patton@uq.edu.au)



### Timothy Piatkowski

Timothy Piatkowski completed a Bachelor of Exercise Science, and Bachelor of Applied Science (Honours) at Queensland University of Technology. He has been involved in teaching and unit coordination work across various schools for several years. Additionally, he has worked in a number of research assistant roles for several years - including neurological disease based research, muscular injury and rehabilitation research, and alcohol and drug abuse treatment projects. This has eventuated in publications, conference presentations, continued education program (CEP) workshop management, and specialised rehabilitation training and research with sporting teams ranging from Queensland Reds, to Carlton Football Club, and the Brisbane Roar. He is currently undertaking a PhD entitled: Understanding what motivates young men's lifestyle choices for enhancing their appearance including steroid use.

**CYSAR ADVISORS** Professor Leanne Hides

**EMAIL** [t.piatkowski@qut.edu.au](mailto:t.piatkowski@qut.edu.au)



### Nina Pocuca

Nina is a PhD candidate at Queensland University of Technology (QUT) and holds an Australian Postgraduate Award and CYSAR top-up PhD scholarship. Nina previously completed a Bachelor of Behavioural Science (Honours Psychology) at QUT. Nina's PhD project 'Examination of Personality Substance Use Risk Profiles and Alcohol Use Trajectories from Early to Late Adolescence' focuses on the role of personality and other demographic and environmental factors on alcohol uptake and trajectories, throughout adolescence. This PhD comprises of four studies. Study one will cross-sectionally examine the moderating effect of environmental factors on the relationship between personality and alcohol use, and explore the relative influence of anxiety sensitivity vs. social anxiety proneness on alcohol use, in early adolescence.

The second study will utilise self-report and behavioural assessments in order to create a new personality risk profile scale for substance use in young people. The third study will examine the reliability and validity of the scale developed in study two, within an adolescent cohort.

Finally, study four will utilise longitudinal data to examine the effects of the interaction between personality and environmental variables on alcohol use trajectories throughout adolescence. Nina is currently also employed as a Research Assistant and Tutor at QUT.

XXXXXXXXXXXXXXXXXXXXXXXXXXXXXXXXXXXX

**CYSAR ADVISORS** Professor Leanne Hides, Dr Catherine Quinn

**EMAIL** [n.pocuca@qut.edu.au](mailto:n.pocuca@qut.edu.au)





### Anna Ralph

Anna is a PhD candidate at the University of Queensland. Anna is based at and supported by CYSAR, and is under the joint supervision of Dr Matthew Gullo, Dr Paul Harnett and Professor Jason Connor. Anna is looking at the pathways from adverse childhood experiences to problematic substance use in adolescents, specifically looking at the role of emotional dysregulation and impulsivity - constructs known to be influential in the development and maintenance of problematic substance use. The overall aim of Anna's PhD is to investigate a potential adjunct treatment for problematic substance use that may improve impulsivity and emotional regulation in at risk populations. To this end, Anna is collaborating with Queensland Health Metro North Alcohol and Drug Services to examine these potential mechanisms of action and intervention in treatment-seeking adolescents.

---

**CYSAR ADVISORS** Dr Matthew Gullo, Professor Jason Connor

**EMAIL** [annaketurah@gmail.com](mailto:annaketurah@gmail.com)



### Rebekah Thomas

Rebekah Thomas is a PhD candidate at the University of Queensland. Her PhD project is titled 'Socio-emotional contexts and the development of eating disorders throughout adolescence'. Her research aims to examine how emotional and familial factors are associated with early signs of eating disorders, in particular, preoccupations with weight, weight control and diet. Rebekah's research also examines the links between EWAs and other health risk behaviours, particularly substance use. Rebekah hopes to further the understanding on the development of eating and weight loss attitudes in adolescence, and the associated relationships with substance use and mental health.

---

**CYSAR ADVISORS** Associate Professor Adrian Kelly and Dr Gary Chan

**EMAIL** [r.thomas@uq.edu.au](mailto:r.thomas@uq.edu.au)



### Freya Young

Freya is a PhD candidate and Clinical Psychology Masters student at the University of Queensland, and holds a Research Training Program Scholarship. Her PhD research investigates the social-cognitive factors that affect treatment outcomes in patients with alcohol use disorders. Freya is particularly interested in improving treatment outcomes by tailoring interventions to fit patients' needs. Freya is also a tutor at UQ.

---

**CYSAR ADVISORS** Dr Matthew Gullo and Professor Jason Connor

**EMAIL** [freya.young@uqconnect.edu.au](mailto:freya.young@uqconnect.edu.au)

# Advisory board

Strategic guidance and support is provided by an Advisory Board, consisting of senior academic, health, youth, clinical and media representatives.

In 2016, Ms Rebecca Lang, Mr Cameron Francis, and Ms Liz Minchin joined the Board. Board members Ms Carrie Fowlie and Mr Francis were appointed as UQ affiliates in CYSAR.

At the end of 2016, Professor Wayne Hall and Professor Leanne Hides stepped down from Advisory Board service along with handing over the Directorship and Deputy Directorship to Professor Jason Connor and Professor David Kavanagh. Professor Connor will resume his Board service in 2017.

## Board membership:

- Chair: **Professor Christina Lee** (Associate Dean [Research], Faculty of Health & Behavioural Sciences, UQ)  
[Click to view profile](#)
- **Professor Doune Macdonald** (Pro-Vice-Chancellor [Teaching and Learning], UQ)  
[Click to view profile](#)
- **Professor Ross Young** (Executive Dean, Faculty of Health, QUT)  
[Click to view profile](#)
- **Professor David Kavanagh** (Deputy Director, Institute of Health and Biomedical innovation, QUT)  
[Click to view profile](#)
- **Professor Jason Connor** (Director, Centre for Youth Substance Abuse Research, UQ)  
[Click to view profile](#)
- **Dr Nicholas Carah** (Senior Lecturer, School of Communication and Arts, UQ)  
[Click to view profile](#)
- **Rebecca Lang** (Chief Executive Officer, Queensland Network of Alcohol and Other Drug Agencies)  
[Click to view profile](#)
- **Ms Carrie Fowlie** (Executive Officer, Alcohol Tobacco and Other Drug Association, ACT)  
[Click to view profile](#)
- **Mr Cameron Francis** (Director, 'Dovetail' [drug and alcohol youth engagement service], Queensland Health).  
[Click to view profile](#)
- **Ms Liz Minchin** (Queensland Editor, The Conversation)  
[Click to view profile](#)



# Major partners and collaborations

## Research

CYSAR has extensive collaborations and links with other national and international researchers in the alcohol and other drug field. Some examples include:

### National

- National Drug and Alcohol Research Centre (NDARC) (NSW)  
[Click to learn more](#)
- Turning Point Alcohol and Drug Centre (Vic)  
[Click to learn more](#)
- Commonwealth Department of Health and Ageing
- Centre for Adolescent Health, Murdoch Children's Research Institute (Vic)  
[Click to learn more](#)
- Orygen Youth Health Research Centre (Vic)  
[Click to learn more](#)

### International

- Kings College London (National Addiction Centre, Institute of Psychiatry)
- London School of Hygiene & Tropical Medicine
- RAND Corporation Drug Policy Research Centre, Santa Monica, California
- World Health Organization (Expert Committee on Drug Dependence)
- World Bank
- United Nations (Office on Drugs and Crime)
- European Monitoring Centre on Drugs and Drug Addiction
- Alcohol and Drug Abuse Institute (University of Washington)

## Industry and Clinical

CYSAR has a number of well-established industry and clinical partners across the drug and alcohol, mental health, emergency, housing and social support sectors. Representatives of many of these services are represented on the CYSAR Advisory Board and have formal UQ affiliate joint appointments with the Centre. These include:

### Brisbane Youth Services (BYS)

BYS supports homeless and disadvantaged young people (aged 12-25 years) and their children, to secure and maintain housing. They provide emergency support and a range of services to assist young people to address physical and mental health issues, establish successful relationships and support networks, and access education and long term employment.

[Click to learn more](#)

### ChaplainWatch Inc.

ChaplainWatch is an independent Brisbane-based charity, focused on public safety in public spaces. It provides a unique, non-authoritarian service, which encompasses crisis intervention, conflict resolution, front-line first aid, counselling and guidance, secondary victim support, and welfare assistance. This rapid response service works in partnership with other official services. ChaplainWatch are a key partner in the Quikfix early intervention project.

[Click to learn more](#)

### CHQ Children & Youth Mental Health Services (CYMHS)

CYMHS at Children's Health Queensland specialises in helping infants, children and young people up to the age of 18 years who have complex mental health and drug and alcohol needs. CYMHS are a key partner on the Quikfix early intervention research program.

[Click to learn more](#)

## Industry and Clinical (continued)

### **Dovetail**

Dovetail is the auspicing body that provides clinical advice and professional support to workers, services and communities across Queensland who engage with young people affected by alcohol and other drug use.

[Click to learn more](#)

### **Drug & Alcohol Brief Intervention Team (DABIT; Queensland Health)**

Based at key QLD hospitals, the DABIT service model is based on successful services overseas, and targets people with alcohol and drug problems not currently in treatment. Young people attending emergency departments often have substance use problems. For example, road trauma, assaults and injuries are often associated with high risk drinking and other drug usage. By providing targeted brief interventions, DABIT can reduce the likelihood of patients progressing from substance use to substance dependence. Professor Hides will implement and evaluate the evidence-based Quikfix early intervention model in these services.

### **Lives Lived Well (LLW)**

LLW is the body that auspices the non-government drug and alcohol treatment sector in Queensland. It has a strong focus on young people, Aboriginal and Torres Strait Islander people, and families.

[Click to learn more](#)

### **Mater Health Adolescent Drug & Alcohol Withdrawal Service (ADAWS)**

ADAWS supports young people through individualised and group support, brief interventions, relapse prevention planning and alternative drug-free activities. The service also aims to reduce drug-related harm by utilising harm reduction strategies that take into account personal goals and choices. ADAWS is a key implementation site of the Quikfix early intervention program and is involved in a number of other treatment studies.

[Click to learn more](#)

### **Queensland Alcohol & Drug Information Service (ADIS; Queensland Health)**

ADIS provides people with a range of interventions that influence and support the decision to reduce or cease harmful substance use. Referrals to alcohol and other drugs services come from the individual experiencing the problem, family and friends, community services, Hospital and Health Services, GPs, Police, Courts and Corrective Services

### **Queensland Injury Surveillance Unit (QISU; Queensland Health/Mater Health)**

Since 1988, Queensland Injury Surveillance Unit (QISU) continuously collects urban injury data from major Brisbane's hospitals, as well as periodically collecting rural data. It has strong collaborations with CYSAR and Prof Hides in her work on preventable youth alcohol and drug injuries.

# Appendices

## 2016 Research Publications

Does not include Honorary, Affiliate or Adjunct staff.

CYSAR staff and student names in BOLD.

### Full Peer Reviewed Manuscripts

1. Abajobir A, Maravilla J, **Alati R**, Najman J. A systematic review and meta-analysis of the association between unintended pregnancy and perinatal depression. *Journal of Affective Disorders* 2016; 192: 56-63.
2. **Alati R**. Should we revisit the 'age at first drink' concept in alcohol research? *Addiction* 2016; 111: 970-1.
3. **Alati R**, Betts K, Williams G, Najman J, Zalbahar N, Mamun A. Generational increase in obesity among young women: a prospective analysis of mother-daughter dyads. *International Journal of Obesity* 2016; 40: 176-80.
4. Armstrong R, Scott J, Copland D, McMahon K, Khan A, Najman J, **Alati R**, Arnott W. Predicting receptive vocabulary change from childhood to adulthood: a birth cohort study. *Alcoholism, Clinical and Experimental Research* 2016; 64: 78-90.
5. Baranoff J, Hanrahan S, Burke A, **Connor JP**. Changes in acceptance in a low-intensity, group-based acceptance and commitment therapy chronic pain intervention. *International Journal of Behavioral Medicine* 2016; 23: 30-8.
6. Betts K, Baker P, **Alati R**, McIntosh J, Macdonald J, Letcher P, Olsson C. The natural history of internalizing behaviours from adolescence to emerging adulthood: findings from the Australian Temperament Project. *Psychological Medicine* 2016; 46: 2815-27.
7. Betts K, **Chan GCK**, McLlwraith F, Dietze P, Whittaker E, Burns L, **Alati R**. Differences in polysubstance use patterns and drug-related outcomes between people who inject drugs receiving and not receiving opioid substitution therapies. *Addiction* 2016; 111: 1214-23.
8. Betts K, Williams G, Najman J, **Alati R**. Predicting spectrums of adult mania, psychosis and depression by prospectively ascertained childhood neurodevelopment. *Journal of Psychiatric Research* 2016; 72: 22-9.
9. Borschmann R, Thomas E, Moran P, Carroll M, Heffernan E, Spittal M, Sutherland G, **Alati R**, Kinner S. Self-harm following release from prison: a prospective data linkage study. *Australian and New Zealand Journal of Psychiatry* 2016; March 24: online before print.
10. Bulley A, **Gullo MJ**. The influence of episodic foresight on delay discounting and demand for alcohol. *Addictive Behaviors* 2016; 66: 1-6.
11. Bulley A, Miloyan B, Brilot B, **Gullo MJ**, Suddendorf T. An evolutionary perspective on the co-occurrence of social anxiety disorder and alcohol use disorder. *Journal of Affective Disorders* 2016; 196: 62-70.
12. Campbell G, Bruno R, Darke S, Shand F, **Hall WD**, Farrell M, Degenhardt L. Prevalence and correlates of suicidal thoughts and suicide attempts in people prescribed pharmaceutical opioids for chronic pain. *Clinical Journal of Pain* 2016; 32: 292-301.
13. Campbell G, Bruno R, Lintzeris N, Cohen M, Nielsen S, **Hall WD**, Larance B, Mattick R, Blyth F, Farrell M, Degenhardt L. Defining problematic pharmaceutical opioid use among people prescribed opioids for chronic noncancer pain: do different measures identify the same patients? *Pain* 2016; 157: 1489-98.
14. Campbell G, Nielsen S, Larance B, Bruno R, Mattick R, **Hall WD**, Lintzeris N, Cohen M, Smith K, Degenhardt L. Opioiddosis korreliert mit Medikamentenmissbrauch. *Journal Club Schmerzmedizin* 2016; 5: 23.
15. Capon H, **Hall WD**, Fry C, Carter A. Realising the technological promise of smartphones in addiction research and treatment: an ethical review. *International Journal of Drug Policy* 2016; 36: 47-57.
16. Carter A, Hendrikse J, Lee N, Yucel M, Verdejo-Garcia A, Andrews Z, **Hall WD**. The neurobiology of "food addiction" and its implications for obesity treatment and policy. *Annual Review of Nutrition* 2016; 36: 105-28.
17. **Chan GCK**, **Kelly AB**, Carroll A, Williams J. Peer drug use and adolescent polysubstance use: do parenting and school factors moderate this association? *Addictive Behaviors* 2016; August 31: 78-81.
18. **Chan GCK**, **Kelly AB**, **Connor JP**, **Hall WD**, Young RMCD, Toumbourou J, Williams J. Regional versus urban differences in teenage alcohol use: does parental disapproval account for these differences? *Australian Journal of Rural Health* 2016; 24: 3-8.
19. **Chan GCK**, **Kelly AB**, **Connor JP**, **Hall WD**, Young RMCD, Williams J. Does parental monitoring and disapproval explain variations in alcohol use among adolescents from different countries of birth? *Drug and Alcohol Review* 2016; 35: 741-49.



20. **Chan GCK, Kelly AB, Hides L, Quinn CA**, Williams J. Does gender moderate the relationship between polydrug use and sexual risk-taking among Australian secondary school students under 16 years of age? *Drug and Alcohol Review* 2016; 35: 750-54.
21. **Chan GCK**, Leung J, **Quinn CA, Connor JP, Hides L, Gullo MJ, Alati R, Weier M, Kelly AB, Hall WD**. Trends in alcohol use in Australia over 13 years: has there been a trend reversal? *BMC Public Health* 2016; 16: 1070.
22. **Chan GCK**, Leung J, **Quinn CA, Kelly AB, Connor JP, Weier M, Hall WD**. Rural and urban differences in adolescent alcohol use, alcohol supply, and parental drinking. *Journal of Rural Health* 2016; 32: 280-6.
23. **Coates JM, Gullo MJ**, Feeney GFX, Kavanagh DJ, Young RMCD, Dingle G, May J, Andrade J, Statham D, **Connor JP**. The Mini Alcohol Craving Experience Questionnaire: development and clinical application. *Alcoholism, Clinical and Experimental Research* 2016; December 26: 156-64.
24. Connell M, Betts K, McGrath J, **Alati R**, Najman J, Clavarino A, Mamun A, Williams G, Scott J. Hallucinations in adolescents and risk for mental disorders and suicidal behaviour in adulthood: prospective evidence from the MUSP birth cohort study. *Schizophrenia Research* 2016; 176: 546-51.
25. **Connor JP**, Haber P, **Hall WD**. Seminar: Alcohol use disorders. *Lancet* 2016; 387: 988-98.
26. Cotton S, Lambert M, Schimmelmann B, Filia K, Rayner V, **Hides L**, Foley D, Ratheesh A, Watson A, Rodger P, McGorry P, Conus P. Predictors of functional status at service entry and discharge among young people with first episode psychosis. *Social Psychiatry and Psychiatric Epidemiology* 2016: submitted for publication.
27. Courtney R, Clare P, Boland V, Martire K, Bonevski B, **Hall WD**, Siahpush M, Borland R, Doran C, West R, Farrell M, Mattick R. Predictors of retention in a randomised trial of smoking cessation in low-socioeconomic status Australian smokers. *Addictive Behaviors* 2016; August: online before print.
28. Cullen A, Barnett A, Komesaroff P, Brown W, O'Brien K, **Hall WD**, Carter A. A qualitative study of overweight and obese Australians' views of food addiction. *Appetite* 2016: accepted for publication.
29. Darharaj M, Habibi M, **Kelly AB**, Edalatmehr Z, Kazemitabar M. Predisposing personality traits and socio-familial factors of tendency toward substance use among soldiers. *Journal of Substance Use* 2016; July 6: online before print.
30. Degenhardt L, Charlson F, Stanaway J, Larney S, Alexander L, Hickman M, Cowie B, **Hall WD**, Strang J, Whiteford H, Vos T. Estimating the burden of disease attributable to injecting drug use as a risk factor for HIV, hepatitis C, and hepatitis B: findings from the Global Burden of Disease Study 2013. *Lancet Infectious Diseases* 2016; 16: 1385-98.
31. Degenhardt L, Larney S, **Chan GCK**, Dobbins T, **Weier M**, Roxburgh A, **Hall WD**, McKetin R. Estimating the number of regular and dependent methamphetamine users in Australia, 2002-2014. *Medical Journal of Australia* 2016; 204: 153.
32. Degenhardt L, Sara G, McKetin R, Roxburgh A, Dobbins T, Farrell M, Burns L, **Hall WD**. Crystalline methamphetamine use and methamphetamine-related harms in Australia. *Drug and Alcohol Review* 2016; June 11: online before print.
33. Degenhardt L, Stockings E, Patton G, **Hall WD**, Lynskey M. The increasing global health priority of substance use in young people. *Lancet Psychiatry* 2016; 3: 251-64.
34. **Demant D, Hides L**, Kavanagh D, White K, Winstock A, Ferris J. Differences in substance use between sexual orientations in a multi-country sample: findings from the Global Drug Survey 2015. *Journal of Public Health* 2016; August 2: online before print.
35. **Dietrich T**, Rundle-Thiele S, Schuster L, **Connor JP**. A systematic literature review of alcohol education programmes in middle and high school settings (2000-2014). *Health Education* 2016; 116: 50-68.
36. **Dietrich T**, Rundle-Thiele S, Schuster L, **Connor JP**. Co-designing social marketing programs. *Journal of Social Marketing* 2016; 6: 41-61.
37. Domnich A, Arata L, Amicizia D, Signori A, Patrick B, Stoyanov S, **Hides L**, Gasparini R, Panatto D. Development and validation of the Italian version of the Mobile Application Rating Scale and its generalisability to apps targeting primary prevention. *BMC Medical Informatics and Decision Making* 2016; 16: 83.
38. Erskine H, Norman R, Ferrari A, **Chan GCK**, Copeland W, Whiteford H, Scott J. Long-term outcomes of attention-deficit/hyperactivity disorder and conduct disorder: a systematic review and meta-analysis. *Journal of the American Academy of Child and Adolescent Psychiatry* 2016; 55: 841-50.
39. Ferro M, Van Lieshout R, Scott J, **Alati R**, Mamun A, Dingle K. Condition-specific associations of symptoms of depression and anxiety in adolescents and young adults with asthma and food allergy. *Journal of Asthma* 2016; 53: 282-8.
40. Forlini C, **Hall WD**. The 'is' and 'ought' of the ethics of neuroenhancement: mind the gap. *Frontiers in Psychology* 2016; 6: 1998.
41. Foulstone A, **Kelly AB**, Kifle T. Partner influences on smoking cessation: a longitudinal study of couple relationships. *Journal of Substance Use* 2016; October 21: online before print.
42. Foulstone A, **Kelly AB**, Kifle T, Baxter J. Heavy alcohol use in the couple context: a nationally representative longitudinal study. *Substance Use and Misuse* 2016; 51: 1441-50.
43. Gartner C, **Hall WD**. Assessing the place of nicotine vaporisers in tobacco control. *Tobacco Control* 2016; 25: e1-2.

44. **Gullo MJ**, Matveeva M, Feeney GFX, Young RMcD, **Connor JP**. Social cognitive predictors of treatment outcome in cannabis dependence. *Drug and Alcohol Dependence* 2016; 170: 74-81.
45. **Hall WD**. The burden of disease attributable to cannabis-implications for policy. *Addiction* 2016; 111: 663-4.
46. **Hall WD**. Alcohol and cannabis: comparing their adverse health effects and regulatory regimes. *International Journal of Drug Policy* 2016; November 28: online before print.
47. **Hall WD**, Carter A, Barnett A. Disease or developmental disorder: competing perspectives on the neuroscience of addiction. *Neuroethics* 2016: accepted for publication.
48. **Hall WD, Chan GCK**. Explaining increased alcohol-related harm and stable per capita consumption in Australia. *Addiction* 2016; 111: 635-6.
49. **Hall WD**, Doran C. How much can the USA reduce health care costs by reducing smoking? *PLoS Medicine* 2016; 13: e1002021.
50. **Hall WD**, Lynskey M. Long-term marijuana use and cognitive impairment in middle age. *JAMA Internal Medicine* 2016; 176: 362-3.
51. **Hall WD**, Lynskey M. Why it is probably too soon to assess the public health effects of legalisation of recreational cannabis use in the USA. *Lancet Psychiatry* 2016; 3: 900-6.
52. **Hall WD**, Lynskey M. Evaluating the public health impacts of legalizing recreational cannabis use in the USA. *Addiction* 2016; 111: 1764-73.
53. **Hall WD**, Patton G, Stockings E, **Weier M**, Lynskey M, Morley K, Degenhardt L. Why young people's substance use matters for global health. *Lancet Psychiatry* 2016; 3: 265-79.
54. **Hall WD**, Strang J. Value for money in reducing opioid-related deaths. *Lancet Public Health* 2016: invited to submit.
55. **Hall WD, Weier M**. Lee Robins' studies of heroin use among US Vietnam veterans. *Addiction* 2016; 112: 176-80.
56. **Hall WD, Weier M**. Has marijuana legalization increased marijuana use among US youth? *JAMA pediatrics* 2016; December 27: online before print.
57. **Hall WD, Weier M**. Reducing alcohol-related violence and other harm in Australia. *Medical Journal of Australia* 2016: invited to submit.
58. **Hall WD**, Yeates S. Alcohol and drug prohibition. *Oxford Bibliographies in Criminology* 2016; June 28: published online.
59. Hamilton K, Kavanagh D, Connolly J, Davis L, Fisher J, Halford K, **Hides L**, Milgrom J, Rowe H, Sanders D, Scuffham P, Tjondronegoro D, Walsh A, White K, Wittkowski A. Baby Steps - an online program promoting the well-being of new mothers and fathers: a study protocol. *JMIR Research Protocols* 2016; 5: e140.
60. **Hides L, Quinn CA**, Stoyanov S, Cockshaw W, Mitchell T, Kavanagh D. Is the mental wellbeing of young Australians best represented by a single, multidimensional or bifactor model? *Psychiatry Research* 2016; 241: 1-7.
61. **Hides L**, Wilson H, **Quinn CA**, Sanders D. QuikFix: enhanced motivational interviewing interventions for youth substance use. *Advances in Dual Diagnosis* 2016; 9: 53-65.
62. Hinchliff G, **Kelly AB, Chan GCK**, Patton G, Williams J. Risky dieting amongst adolescent girls: associations with family relationship problems and depressed mood. *Eating Behaviours* 2016; 22: 222-4.
63. **Jensen C**, Forlini C, Partridge B, **Hall WD**. Australian university students' coping strategies and use of pharmaceutical stimulants as cognitive enhancers. *Frontiers in Psychology* 2016; 7: 277.
64. Johnson D, Deterding S, Kuhn K, Staneva A, Stoyanov S, **Hides L**. Gamification for health and wellbeing: a systematic review of the literature. *Internet Interventions* 2016; 6: 89-106.
65. Keane H, **Weier M**, Fraser D, Gartner C. 'Anytime, anywhere': vaping as social practice. *Critical Public Health* 2016; November 1: online before print.
66. **Kelly AB, Chan GCK, Weier M, Quinn CA, Gullo MJ, Connor JP, Hall WD**. Parental supply of alcohol to Australian minors: an analysis of six nationally representative surveys spanning 15 years. *BMC Public Health* 2016; 16: 325.
67. **Kelly AB**, Mason W, Chmelka M, Herrenkohl T, Kim M, Patton G, Hemphill S, Toumbourou J, Catalano R. Depressed mood during early to middle adolescence: a bi-national longitudinal study of the unique impact of family conflict. *Journal of Youth and Adolescence* 2016; 45: 1604-13.
68. Kinner S, **Alati R**, Longo M, Spittal M, Boyle F, Williams G, Lennox N. Low-intensity case management increases contact with primary care in recently released prisoners: a single-blinded, multisite, randomised controlled trial. *Journal of Epidemiology and Community Health* 2016; 70: 683-8.
69. Kitunen A, Rundle-Thiele S, Kubacki K, **Dietrich T**. Generating consumer insights into physical activity patterns for three different segments. *Journal of Strategic Marketing* 2016; July 11: online before print.
70. Knox K, Schmidtke D, **Dietrich T**, Rundle-Thiele S. "Everyone was wasted"! Insights from adolescents' alcohol experience narratives. *Young Consumers* 2016; 17: 321-36.
71. Lai FY, O'Brien J, Bruno R, **Hall WD**, Prichard J, Kirkbride P, Gartner C, Thai P, Carter S, Lloyd B, Burns L, Mueller J. Spatial variations in the consumption of illicit stimulant drugs across Australia: a nationwide application of wastewater-based epidemiology. *Science of the Total Environment* 2016; 568: 810-18.
72. Lai FY, O'Brien J, Thai PK, **Hall WD, Chan GCK**, Bruno R, Ort C, Prichard J, Carter S, Anuj S, Kirkbride K, Gartner C, Humphries M, Mueller J. Cocaine, MDMA and methamphetamine residues in wastewater: consumption trends (2009-2015) in South East Queensland, Australia. *Science of the Total Environment* 2016; 568: 803-09.

73. Lai FY, O'Brien J, Thai PK, **Hall WD**, Mueller J. Trends in methamphetamine residues in wastewater in metropolitan and regional cities in south-east Queensland, 2009-2015. *Medical Journal of Australia* 2016; 204: 151-2.
74. Larance B, Campbell G, Peacock A, Nielsen S, Bruno R, **Hall WD**, Lintzeris N, Cohen M, Degenhardt L. Pain, alcohol use disorders and risky patterns of drinking among people with chronic non-cancer pain receiving long-term opioid therapy. *Drug and Alcohol Dependence* 2016; 162: 79-87.
75. Lau WYP, Peterson C, Attwood T, Garnett M, **Kelly AB**. Parents on the autism continuum: links with parenting efficacy. *Research in Autism Spectrum Disorders* 2016; 26: 57-64.
76. Law B, **Gullo MJ**, Daglish M, Kavanagh D, Feeney GFX, Young RMcD, **Connor JP**. Craving mediates stress in predicting lapse during alcohol dependence treatment. *Alcoholism: Clinical and Experimental Research* 2016; 40: 1058-64.
77. Lawford B, Barnes M, Morris C, Noble E, Nyst P, Heslop K, Young RMcD, Voisey J, **Connor JP**. Dopamine 2 Receptor genes are associated with raised blood glucose in schizophrenia. *Canadian Journal of Psychiatry* 2016; 61: 291-7.
78. Leamy T, **Connor JP**, Voisey J, Young RMcD, **Gullo MJ**. Alcohol misuse in emerging adulthood: association of dopamine and serotonin receptor genes with impulsivity-related cognition. *Addictive Behaviors* 2016; 63: 29-36.
79. Luo W, Harvey R, Tran T, Phung D, Venkatesh S, **Connor JP**. Consistency of the Health of the Nation Outcome Scales (HoNOS) at inpatient-to-community transition. *BMJ Open* 2016; 6: e010732.
80. Lynskey M, **Hall WD**. Cannabis use and cannabis use disorders. *Lancet Psychiatry* 2016; August 31: online before print.
81. Mann K, Fauth-Bühler M, Higuchi S, Potenza M, **Saunders JB**. Pathological gambling: a behavioral addiction. *World Psychiatry* 2016; 15: 297-98.
82. Maravilla J, Betts K, Abajobir A, Couto E, **Alati R**. The role of community health workers in preventing adolescent repeat pregnancies and births. *Journal of Adolescent Health* 2016; 59: 378-90.
83. McGrath J, **Alati R**, Clavarino A, Williams G, Bor W, Najman J, Connell M, Scott J. Age at first tobacco use and risk of subsequent psychosis-related outcomes: a birth cohort study. *Australian and New Zealand Journal of Psychiatry* 2016; 50: 577-83.
84. McKetin R, Dawe S, Burns R, **Hides L**, Kavanagh D, Teesson M, Young RMcD, Voce A, Saunders JB. The profile of psychiatric symptoms exacerbated by methamphetamine use. *Drug and Alcohol Dependence* 2016; 161: 104-9.
85. McKetin R, Degenhardt L, **Hall WD**. Estimating the number of regular and dependent methamphetamine users in Australia, 2002-2014: letter. *Medical Journal of Australia* 2016; 205: 426.
86. Meier M, **Hall WD**, Caspi A, Belsky D, Cerda M, Harrington H, Houts R, Poulton R, Moffitt T. Which adolescents develop persistent substance dependence in adulthood? Using population-representative longitudinal data to inform universal risk assessment. *Psychological Medicine* 2016; 46: 877-89.
87. Meurk C, Fraser D, **Weier M**, Lucke J, Carter A, **Hall WD**. Assessing the place of neurobiological explanations in accounts of a family member's addiction. *Drug and Alcohol Review* 2016; 35: 461-9.
88. Meurk C, Leung J, **Hall WD**, Head B, Whiteford H. Establishing and governing e-mental health care in Australia: a systematic review of challenges and a call for policy-focussed research. *Journal of Medical Internet Research* 2016; 18: e10.
89. Meurk C, Morphett K, Carter A, **Weier M**, Lucke J, **Hall WD**. Scepticism and hope in a complex predicament: People with addictions deliberate about neuroscience. *International Journal of Drug Policy* 2016; 32: 34-43.
90. Mewton L, Kessler RC, Slade T, Hobbs M, Brownhill L, Birrell L, Tonks Z, Teesson M, Newton N, Chapman C, Allsop S, **Hides L**, McBride N, Andrews G. The psychometric properties of the Kessler Psychological Distress Scale (K6) in a general population sample of adolescents. *Psychological Assessment* 2016; 28: 1232-42.
91. Mills R, Kisely S, **Alati R**, Strathearn L, Najman J. Child maltreatment and cannabis use in young adulthood: a birth cohort study. *Addiction* 2016; October 14: online before print.
92. Mills R, Kisely S, **Alati R**, Strathearn L, Najman J. Self-reported and agency-notified child sexual abuse in a population-based birth cohort. *Journal of Psychiatric Research* 2016; 74: 87-93.
93. Morphett K, Carter A, **Hall WD**, Gartner C. A qualitative study of smokers' views on brain-based explanations of tobacco dependence. *International Journal of Drug Policy* 2016; 29: 41-8.
94. Morphett K, Carter A, **Hall WD**, Gartner C. Medicalisation, smoking and e-cigarettes: evidence and implications. *Tobacco Control* 2016; November 30: online before print.
95. Morphett K, Carter A, **Hall WD**, Gartner C. Framing tobacco dependence as a "brain disease": implications for policy and practice. *Nicotine and Tobacco Research* 2016: submitted for publication.
96. Najman J, Plotnikova M, Williams G, **Alati R**, Mamun A, Scott J, Clavarino A, Wray N. Maternal depression and family adversity: linked pathways to offspring depression? *Journal of Psychiatric Research* 2016 submitted: accepted for publication.
97. Najman J, Plotnikova M, Williams G, **Alati R**, Mamun A, Scott J, Wray N, Clavarino A. Trajectories of maternal depression: a 27-year population-based prospective study. *Epidemiology and Psychiatric Sciences* 2016; January 19: online before print.
98. Nasir B, **Hides L**, Kisely S, Ranmuthugala G, Nicholson G, Black E, Gill N, Kondalsamy-Chennakesavan S, Toombs M. The need for a culturally-tailored gatekeeper training intervention program in preventing suicide among Indigenous peoples: a systematic review. *BMC Psychiatry* 2016; 16: 357.



99. Nasstasia Y, Baker A, Halpin S, Lewin T, **Hides L**, Kelly B, Callister R. Pilot study of an exercise intervention for depressive symptoms and associated cognitive-behavioral factors in young adults with major depression. *Journal of Nervous and Mental Disease* 2016; October 31: online before print.
100. Nielsen S, Gisev N, Bruno R, **Hall WD**, Cohen M, Larance B, Campbell G, Shanahan M, Blyth F, Lintzeris N, Pearson S, Mattick R, Degenhardt L. Defined daily doses (DDD) do not accurately reflect opioid doses used in contemporary chronic pain treatment. *Pharmacoepidemiology and Drug Safety* 2016: accepted for publication.
101. **Papinczak ZE, Connor JP**, Feeney GFX, Young RMCD, **Gullo MJ**. Treatment seeking in cannabis dependence: the role of social cognition. *Drug and Alcohol Dependence* 2016; 170: 142-46.
102. **Patton K, Connor JP**, Rundle-Thiele S, **Dietrich T**, Young RMCD, **Gullo MJ**. Validation of the Adolescent Drinking Expectancy Questionnaire (DEQ-A) and development of a short form (DEQ-SA). *Drug and Alcohol Review* 2016: accepted for publication.
103. Peacock A, Degenhardt L, Campbell G, Larance B, Nielsen S, **Hall WD**, Mattick R, Bruno R. A typology of predictive risk factors for non-adherent medication-related behaviors among chronic non-cancer pain patients prescribed opioids: a cohort study. *Pain Physician* 2016; 19: E421-34.
104. **Pocuca N, Hides L**, Zelenko O, Quek L-H, Stoyanov S, Tulloch K, Johnson D, Tjondronegoro D, Kavanagh D. Initial prototype testing of "Ray's Night Out": a new mobile app targeting risky drinking in young people. *Computers in Human Behavior* 2016; 54: 207-14.
105. Price M, **Hides L**, Cockshaw W, Staneva A, Stoyanov S. Young love: romantic concerns and associated mental health issues among adolescent help-seekers. *Behavioral Sciences* 2016; 6: E9.
106. **Quinn CA**, Fitzpatrick S, Bussey K, **Hides L, Chan GCK**. Associations between the group processes of bullying and adolescent substance use. *Addictive Behaviors* 2016; 62: 6-13.
107. **Quinn CA, Hides L**, Harding A, **de Andrade D**, Wilson H. Alcohol-related risks and frontline care in entertainment districts. *Journal of Criminological Research, Policy and Practice* 2016: accepted for publication.
108. **Quinn CA**, Wilson H, Cockshaw W, Barkus E, **Hides L**. Development and validation of the Cannabis Experiences Questionnaire - Intoxication Effects Checklist (CEQ-I) short form. *Schizophrenia Research* 2016: accepted for publication.
109. Rebgetz S, **Hides L**, Kavanagh D, Choudhary A. Prospective recovery of cannabis use in a psychotic population: a qualitative analysis. *Addictive Behaviors Reports* 2016; 4: 31-36.
110. Rebgetz S, Kavanagh D, **Hides L**. Changes in cannabis use among psychotic clients without specialised substance use treatment. *Schizophrenia Research* 2016; 175: 136-41.
111. Robinson N, Kavanagh D, **Connor JP**, May J, Andrade J. Assessment of motivation to control alcohol use: the motivational thought frequency and state motivation scales for alcohol control. *Addictive Behaviors* 2016; 59: 1-6.
112. Salom C, Betts K, Williams G, Najman J, **Alati R**. Predictors of comorbid polysubstance use and mental health disorders in young adults-a latent class analysis. *Addiction* 2016; 111: 156-64.
113. Salom C, **Kelly AB, Alati R**, Williams G, Patton G, Williams J. Individual, school-related and family characteristics distinguish co-occurrence of drinking and depressive symptoms in very young adolescents. *Drug and Alcohol Review* 2016; 35: 387-96.
114. **Saunders JB**. Substance use and addictive disorders in DSM-5 and ICD 10 and the draft ICD 11. *Current Opinion in Psychiatry* 2016 in press.
115. **Saunders JB**, Degenhardt L, Farrell M. Excessive gambling and gaming: addictive disorders? *Lancet Psychiatry* 2016 in press.
116. Sharma R, Gartner C, **Hall WD**. The challenge of reducing smoking in people with serious mental illness. *Lancet Respiratory Medicine* 2016; 4: 835-44.
117. Stockings E, **Hall WD**, Lynskey M, Morley K, Reavley N, Strang J, Patton G, Degenhardt L. Prevention, early intervention, harm reduction, and treatment of substance use in young people. *Lancet Psychiatry* 2016; 3: 280-96.
118. Stoyanov S, **Hides L**, Kavanagh D, Wilson H. Development and validation of the user version of the Mobile Application Rating Scale (uMARS). *JMIR Mhealth Uhealth* 2016; 4: e72.
119. Sutherland R, Sindich N, Entwistle G, Whittaker E, Peacock A, Matthews A, Bruno R, **Alati R**, Burns L. Tobacco and e-cigarette use amongst illicit drug users in Australia. *Drug and Alcohol Dependence* 2016; 159: 35-41.
120. Swift W, Slade T, Carragher N, Coffey C, Degenhardt L, **Hall WD**, Patton G. Adolescent predictors of a typology of DSM-5 Alcohol Use Disorder symptoms in young adults derived by latent class analysis using data from an Australian cohort study. *Journal of Studies on Alcohol and Drugs* 2016; 77: 757-65.
121. Thai PK, Lai FY, Bruno R, van Dyken E, **Hall WD**, O'Brien J, Prichard J, Mueller J. Refining the excretion factors of methadone and codeine for wastewater analysis - Combining data from pharmacokinetic and wastewater studies. *Environment International* 2016; 94: 307-14.
122. Thai PK, Lai FY, Edirisinghe M, **Hall WD**, Bruno R, O'Brien J, Prichard J, Kirkbride K, Mueller J. Monitoring temporal changes in use of two cathinones in a large urban catchment in Queensland, Australia. *Science of the Total Environment* 2016; 545-546: 250-5.
123. Thomas E, Spittal M, Heffernan E, Taxman F, **Alati R**, Kinner S. Trajectories of psychological distress after prison release: implications for mental health service need in ex-prisoners. *Psychological Medicine* 2016; 46: 611-21.
124. Thomas HJ, **Chan GCK**, Scott J, **Connor JP, Kelly AB**, Williams J. Association of different forms of bullying victimisation with adolescents' psychological distress and reduced emotional wellbeing. *Australian and New Zealand Journal of Psychiatry* 2016; 50: 371-79.

125. Thomas HJ, **Connor JP**, Baguley C, Scott J. Two sides to the story: adolescent and parent views on harmful intention in defining school bullying. *Aggressive Behavior* 2016; December 20: online before print.
126. Thorberg F, Young RMCD, Lyvers M, Sullivan K, Hasking P, London E, Tyssen R, **Connor JP**, Feeney GFX. Alexithymia in relation to alcohol expectancies in alcohol-dependent outpatients. *Psychiatry Research* 2016; 236: 186-8.
127. Thorberg F, Young RMCD, Sullivan K, Lyvers M, Hurst C, **Connor JP**, Tyssen R, London E, Noble E, Feeney GFX. A longitudinal mediational study on the stability of alexithymia among alcohol-dependent outpatients in cognitive-behavioral therapy. *Psychology of Addictive Behaviors* 2016; 30: 64-72.
128. van Dyken E, Lai FY, Thai PK, Ort C, Bruno R, **Hall WD**, Kirkbride K, Mueller J, Prichard J. Challenges and opportunities in using wastewater analysis to measure drug use in a small prison facility. *Drug and Alcohol Review* 2016; 35: 138-47.
129. **Weier M**, Lee C. Stagnant or successful, carefree or anxious? Australian university students' goals and beliefs about adulthood and their current well-being. *Australian Psychologist* 2016; 51: 422-30.
130. Whiteford H, Meurk C, Carstensen G, **Hall WD**, Hill P, Head B. How did youth mental health make it onto Australia's 2011 federal policy agenda? *SAGE Open* 2016; 6: 4.
131. Young J, Cumming C, van Dooren K, Lennox N, **Alati R**, Spittal M, Brophy L, Preen D, Kinner S. Intellectual disability and patient activation after release from prison: a prospective cohort study. *Journal of Intellectual Disability Research* 2016: accepted for publication.
132. Zhang S, Dissanayaka N, Dawson A, O'Sullivan J, Mosley P, **Hall WD**, Carter A. Management of impulse control disorders in Parkinson's disease. *International Psychogeriatrics* 2016; 28: 1597-614.
133. Zimmerman D, Ownsworth T, O'Donovan A, Roberts J, **Gullo MJ**. Associations between executive functions and mental health outcomes for adults with autism spectrum disorder. *Psychiatry Research* 2016: submitted for publication.
134. Zimmerman D, Ownsworth T, O'Donovan A, Roberts J, **Gullo MJ**. Independence of hot and cold executive function deficits in high-functioning adults with autism spectrum disorder. *Frontiers in Human Neuroscience* 2016; 10: 24.

## Books and Book Chapters

### CYSAR staff and student names in BOLD.

1. Allsop D, **Hall WD**. International aspects of cannabis use and misuse: the Australian perspective. In: Preedy VR, editor. *Handbook of cannabis and related pathologies: biology, pharmacology, diagnosis and treatment*. London: Academic Press; 2016 in press.
2. Barnett A, **Hall WD**, Carter A. Disease model of addiction. *SAGE encyclopedia of abnormal and clinical psychology*. Thousand Oaks, California: Sage; 2016 in press.
3. Bell S, Lucke J, **Hall WD**. Lessons for enhancement from the history of cocaine and amphetamine use. In: ter Meulen R, Mohamed AD, **Hall WD**, editors. *Rethinking cognitive enhancement*. Oxford: Oxford University Press; 2016 in press.
4. Carter A, **Hall WD**. Ethical issues in addiction medicine and bioscience. In: Haber P, Day C, Farrell M, editors. *Addiction medicine: principles and practice* (55-63). Melbourne: IP Communications; 2016.
5. Casado F, Rundle-Thiele S, **Dietrich T**. Segmenting caregivers to gain insights for social marketing program design. In: **Dietrich T**, Rundle-Thiele S, Kubacki K, editors. *Segmentation in social marketing: methods and approaches*. Singapore: Springer Science; 2016 in press.
6. **Connor JP**, Feeney GFX, **Kelly AB**, **Saunders JB**. Polysubstance abuse In: Wolff K, White J, Karch S, editors. *Handbook of drug and alcohol studies*. Thousand Oaks, California: Sage; 2016 in press.
7. **Connor JP**, **Hall WD**. The age of onset of alcohol use disorders. In: de Girolamo G, McGorry P, Sartorius N, editors. *Age of onset of mental disorders: etiopathogenetic and treatment implications*. New York: Springer; 2016 in press.
8. Degenhardt L, Ferrari A, **Hall WD**. The global epidemiology and disease burden of cannabis use and dependence. In: Preedy VR, editor. *Handbook of cannabis and related pathologies: biology, pharmacology, diagnosis and treatment*. London: Academic Press; 2016 in press.
9. Degenhardt L, Gartner C, **Hall WD**. The epidemiology of tobacco, alcohol and illicit drug use and their contribution to the burden of disease. In: Haber P, Day C, Farrell M, editors. *Addiction medicine: principles and practice* (8-21). Melbourne: IP Communications; 2016.
10. Degenhardt L, **Hall WD**. Drugs and their impact on public health. In: Brownstein H, editor. *The Wiley handbook on drugs and society* (300-19). Wiley and Sons: New York; 2016.
11. Degenhardt L, **Hall WD**, Stone C. Illicit drugs: patterns of use, dependence and contribution to disease burden in developed countries. In: Sher KJ, editor. *The Oxford handbook of substance use and substance use disorders* (50-66). Oxford: Oxford University Press; 2016.
12. Degenhardt L, **Hall WD**, **Weier M**. Illicit drugs: patterns of use, dependence, and contribution to disease burden in developed countries. In: Quah SR, editor. *International encyclopedia of public health* 2nd ed. Oxford: Academic Press; 2016 in press.

13. Degenhardt L, Stockings E, Strang J, Marsden J, **Hall WD**. Illicit drug dependence. In: Patel V, Chisholm D, Dua T, Laxminarayan R, Medina-Mora M, Vos T, editors. *Disease control priorities, volume 4: mental, neurological, and substance use disorders* (109-26). 3rd ed. Washington, DC: World Bank; 2016.
14. **Dietrich T**. Segmentation in social marketing: five steps to success. In: **Dietrich T**, Rundle-Thiele S, Kubacki K, editors. *Segmentation in social marketing: methods and approaches*. Singapore: Springer Science; 2016 in press.
15. Feeney GFX, **Connor JP**. Polysubstance use. In: Saunders JB, Conigrave K, Latt N, Nutt D, Marshall E, Ling W, *et al.*, editors. *Addiction medicine: principles and practice* 2nd ed. Oxford: Oxford University Press; 2016.
16. **Gullo MJ, Coates JM, Patton K, Connor JP**. Beyond CBT: what is the future of alcohol use disorder treatment and prevention? In: Menzies R, Kyrios M, Kazantzis N, editors. *Innovations and future directions in the behavioural and cognitive therapies* (157-62). Brisbane: Australian Academic Press; 2016.
17. **Hall WD**, Degenhardt L. Cannabis-related disorders. In: Sadock B, Sadock V, Ruiz P, editors. *Kaplan and Sadock's comprehensive textbook of psychiatry* 10th (50th anniversary) ed. Philadelphia: Wolters Kluwer; 2016 in press.
18. **Hall WD, Alati R**. Gateway patterns of drug use. In: Levesque R, editor. *Encyclopedia of adolescence* 2nd ed. New York: Springer; 2016.
19. **Hall WD**, Strang J. Challenges in regulating the use of stimulant drugs for cognitive enhancement in normal individuals. In: ter Meulen R, Mohamed AD, **Hall WD**, editors. *Rethinking cognitive enhancement*. Oxford: Oxford University Press; 2016 in press.
20. **Jensen C**, Partridge B, Forlini C, Lucke J, **Hall WD**. Cognitive enhancement down under: an Australian perspective. In: Dubljevic V, editor. *Cognitive enhancement: ethical and policy issues in international perspective* (147-58). Oxford: Oxford University Press; 2016.
21. Kavanagh D, Connolly J, White A, **Kelly AB**, Parr J. Low-intensity Cognitive-Behavioural Therapies by Mail (M-CBT). In: Bennett-Levy J, Richards D, Farrand P, Christensen H, Griffiths K, Kavanagh D, *et al.*, editors. *The Oxford guide to low intensity CBT interventions*. Oxford: Oxford University Press; 2016 in press.
22. Kubacki K, **Dietrich T**, Rundle-Thiele S. Segmentation in social marketing: why we should do it more often than we currently do. In: **Dietrich T**, Rundle-Thiele S, Kubacki K, editors. *Segmentation in social marketing: methods and approaches*. Singapore: Springer Science; 2016 in press.
23. Rundle-Thiele S, **Dietrich T**, Kubacki K. Why we need segmentation when designing social marketing programs. In: **Dietrich T**, Rundle-Thiele S, Kubacki K, editors. *Segmentation in social marketing: process, methods and application*. Singapore: Springer Science; 2016 in press.
24. Saunders JB, **Connor JP**, Feeney GFX. Gamma-hydroxybutyric Acid (GHB) and analogues Gamma-butyrolactone (GBL) 1,4-butanediol (1,4-BD). In: Wolff K, White J, Karch S, editors. *Handbook of drug and alcohol studies*. Thousand Oaks, California: Sage; 2016 in press.
25. Steindl S, **Connor JP**. Enhancing treatment engagement through motivational interviewing. In: Hadler A, Sutton S, Osterberg L, editors. *The Wiley handbook of treatment engagement*. New York: John Wiley; 2016 in press.
26. ter Meulen R, Mohamed A, **Hall WD**. Introduction. In: ter Meulen R, Mohamed AD, **Hall WD**, editors. *Rethinking cognitive enhancement*. Oxford: Oxford University Press; 2016 in press.
27. **Saunders JB**, Conigrave K, Latt N, Nutt D, Marshall E, Ling W, Higuchi S, editors. *Addiction medicine*. Second edition. Oxford: Oxford University Press; 2016.
28. **Saunders JB**, Rey J, editors. *Young people and alcohol: impact, policy, prevention, treatment*. Chichester, UK: Wiley-Blackwell; 2011.
29. Thomas H, **Kelly AB**, Toumbourou J. Prevention of alcohol related harm for children and adolescents. In: Fitzgerald J, Byrne G, editors. *Psychosocial dimensions of medicine* (291-304). Lane Cove, NSW: IP Communications; 2016.



## Reports

### CYSAR staff and student names in BOLD.

The World Health Organization regularly commissions comprehensive reports on global health issues, including substance use. This report, in addition to a series of three papers for The Lancet Psychiatry focusing on youth substance use and global health, was released in time to inform debate at the United Nations General Assembly Special Session on the World Drug Problem. It was the third special session in UN history devoted to the drugs issue. Professor Hall has been an advisor to WHO on the health effects of cannabis since 1993 and a member of the WHO Expert Committee on Drug Dependence since 1996. WHO acknowledged the particular contribution of Professor Wayne Hall, Centre for Youth Substance Abuse Research, Australia, as the main writer and editor of this document.

**Hall WD**, Renström M, Poznyak V, editors. *The health and social effects of nonmedical cannabis use. Prepared by the Management of Substance Abuse unit in the Department of Mental Health and Substance Abuse*. Geneva: World Health Organization; 2016.

## Conference Presentations

### CYSAR staff and student names in BOLD.

1. Barnett A, Fry C, **Hall WD**, Carter A. The clinical impact of the Brain Disease Model of Addiction: a mixed methods study exploring alcohol and other drug treatment providers' attitudes. *Drug and Alcohol Review* 2016; 35 (s1): 24.
2. Birrell L, Newton N, Slade T, Chapman C, Andrews G, Mewton L, Allsop S, McBride N, **Hides L**, Shaw B, Te Pas N, **Pocuca N**, Firmin-Sarra S, Tonks Z, Teesson M. Innovative online prevention materials for substance use, anxiety and depression: an inside look into the Climate Schools Combined Study. *Drug and Alcohol Review* 2016; 35 (s1): 8.
3. Campbell G, Bruno R, Lintzeris N, Cohen M, Nielsen S, **Hall WD**, Larance B, Mattick R, Blyth F, Farrell M, Degenhardt L. Defining problematic pharmaceutical opioid use among people prescribed opioids for chronic non-cancer pain: Do different measures identify the same patients? *Drug and Alcohol Review* 2016; 35 (s1): 30.
4. **Chan GCK**, **Kelly AB**, **Connor JP**, **Hall WD**, Leung J. Prevalence of parental alcohol supply and adolescent alcohol use in 45 low and middle income countries. *Drug and Alcohol Review* 2016; (s1): 30.
5. Cotton S, Mackinnon A, Gleeson J, **Hides L**, Foley D, Herrman H, Filia K, Berk M, Conus P, Lambert M, Schimmelmann B, McGorry P. The First Episode Psychosis Outcome Study: preliminary data on the long-term follow-up of first episode psychosis patients who were treated at the early psychosis prevention and intervention centre between 1998-2000. *Early Intervention in Psychiatry* 2016; **10** (s1): 110.
6. **Hides L**. Impact of physical activity on the mental health and wellbeing of young people. *International Journal of Behavioral Medicine* 2016; **23**: S10.
7. **Hides L**, Cockshaw W, Stoyanov S, Kavanagh D. Keep it Real: a new web-based program for psychotic-like experiences in young cannabis users. *Early Intervention in Psychiatry* 2016; **10** (s1): 219.
8. **Hides L**, Cockshaw W, Stoyanov S, Kavanagh D. Feasibility and outcomes of a web based program targeting psychotic-like experiences among young cannabis users (Leanne Hides, presenter). *Drug and Alcohol Review* 2016; 35 (s1): 42.
9. **Hides L**, **Quinn CA**. Are Cannabis Induced Psychotic-Like Experiences (PLEs) associated with the frequency of cannabis use? *Early Intervention in Psychiatry* 2016; **10** (s1): 105.
10. **Hides L**, **Quinn CA**. Self-efficacy to control heavy drinking as a moderator of personality factors and problem drinkers. *Drug and Alcohol Review* 2016; (s1): 18.
11. **Jensen C**, **Hall WD**. The non-medical use of prescription stimulants by Australian university students for cognitive enhancement. *Drug and Alcohol Review* 2016; 35 (s1): 45.

12. Leung J, Santomauro D, Galasyuk N, **Kelly AB, Connor JP, Hall WD, Chan GCK**. Gender differences in binge drinking in 278 countries – a meta-analysis by global regions. *Drug and Alcohol Review* 2016; 35 (s1): 50.
13. Mewton L, Kessler R, Slade T, Hobbs M, Brownhill L, Birrell L, Tonks Z, Teesson M, Newton N, Chapman C, Allsop S, **Hides L**, McBride N, Andrews G. The psychometric properties of the Kessler Psychological Distress Scale (K6) in a general population sample of adolescents. *Drug and Alcohol Review* 2016; 35 (s1): 7.
14. **Pocuca N, Hides L, Quinn CA**, White M, Mewton L, Newton N, Slade T, Chapman C, Andrews G, Allsop S, Birrell L, Shaw B, Te Pas N, Firmin-Sarra S, Teesson M. The moderating effect of friends' drinking on the relationship between personality and drinker status in early adolescence. *Drug and Alcohol Review* 2016; 35 (s1): 18.
15. **Quinn CA, Hides L**. The interrelationship between impulsivity/sensation seeking and social cognitive processes on drinking initiation during early adolescence. *Drug and Alcohol Review* 2016; 35 (s1): 18.
16. **Quinn CA, Hides L, Pocuca N**, White M, Mewton L, Newton N, Slade T, Andrews G, Allsop S, McBride N, Birrell L, Shaw B, Te Pas N, Firmin-Sarra S, Teesson M. Personality risk profiles and drinking – moderators to consider. *Drug and Alcohol Review* 2016; 35 (s1): 17.
17. Shaw B, Slade T, Newton N, Chapman C, Mewton L, Andrews G, Allsop S, **Hides L**, McBride N, Birrell L, Te Pas N, **Pocuca N**, Firmin-Sarra S, Tonks Z, Teesson M. Drug and alcohol use and mental health problems among young Australians: a comparison of the Climate Schools Combined Study and nationally representative studies. *Drug and Alcohol Review* 2016; 35 (s1): 7.

## Conferences and presentations

A major theme in 2016 was youth health and wellbeing in an era of legalisation of medical and recreational cannabis despite the international drug treaty system. Professor Wayne Hall delivered the Society for the Study of Addiction Annual Lecture (SSA, founded 1884) in York, UK following a year of invited lectures and participation in expert panels at internationally leading US and UK research institutes at John Hopkins University, Columbia University, RAND Corporation, University of Washington, Seattle; and Kings College London. Wayne was invited to a meeting at Georgetown University School of Law, Washington, DC to produce an expert consensus document on regulating sales of cannabis to minimise harm.

## Director's invited international presentations

- What are the adverse health effects of cannabis? Bloomberg School of Public Health, John Hopkins University, Baltimore, March.
- Invited discussant: Regulating temptation goods panel convened by Jonathon Caulkins. Cannabis Policy Summit, New York University, April, to coincide with the UN General Assembly Special Session on the Drug Problem
- The challenges in formulating a more rational cannabis policy. Mailman School of Public Health, Columbia University, April.
- What is the future of the international drug control treaties? Drug Policy Research Center, RAND Corporation, Santa Monica, California, October.
- What have we learned about the adverse health effects of recreational cannabis use over the past 30 years? Alcohol and Drug Abuse Institute, University of Washington, Seattle, October.
- An update on the implementation of cannabis legalisation in Washington State, USA. National Addiction Centre, Institute of Psychiatry, Psychology and Neuroscience, Kings College London, October.
- The future of the international drug control treaties. Society for Study of Addiction Annual Lecture. York, UK, November.

## Research Grants and Contracts

*Does not include Honorary, Affiliate or Adjunct staff.*

### NEW in 2016

#### CYSAR led Chief Investigator

Years	Source	Type	Investigators	Title	Awarded
2016 awarded (2017-2021)	NHMRC	Senior Research Fellowship	<b>Hides</b>	Early interventions for primary and comorbid substance use in young people: engagement, innovation, technology and translation	\$706,370
2016-2018	UQ	UQ Fellowships - Early Career Researcher stream  (Mentor: <b>Kelly</b> )	<b>Chan</b>	Pathways to multiple substance use: informing the next generation of prevention science	\$197,818
2017	UQ	Early Career Researcher Grant	<b>Chan</b>	Informing future policies on cannabis in Australia. Lessons from new trends in the USA and from the history of tobacco control	\$33,000
2016	UQ Faculty of Health and Behavioural Sciences	Research Collaboration Seeding Grant	<b>Gullo, Connor</b> , Sheffield	A cluster randomised controlled trial of a brief mindfulness-enhanced intervention for adolescent alcohol use & wellbeing	\$33,852
2016-2017	QUT Institute of Health and Biomedical Innovation	ECR Development Scheme (Mentors: <b>Hides</b> , Kavanagh)	<b>Quinn</b>	Evaluation of two school-based interventions to increase safe partying behaviours at Schoolies and beyond	\$9,732
2017-2018	Qld Dept of Education and Training	Horizon Grant	<b>Hides, Quinn</b> , Kavanagh, Adsett	The RAW Wellbeing Program for adolescents at risk of disengaging from education and training	\$179,815
2016-2017	EMCDDA	Tender	<b>Hall</b>	Scientific writing support for European Monitoring Centre for Drugs and Drug Addiction scientific publication	\$85,391



## CYSAR Chief Investigators

Years	Source	Type	Investigators	Title	Awarded
2016-2019	NHMRC	Project Grant	Kavanagh, Graves, <b>Connor</b> , <b>Hides</b> , <b>Gullo</b> , Connolly, Andrade, May	A new, low-cost e-health treatment for Alcohol Use Disorder using mental imagery	\$895,032
2016-2018	ARC	Linkage Project in partnership with Catholic Education	Rundle-Thiele, Arli, Kubacki, <b>Connor</b> , <b>Gullo</b> , Percy	Changing Australian drinking: a comprehensive social marketing program	\$234,000 plus \$162,000 to partner Catholic Education
2016-2020	NHMRC	Project Grant	Borland, Gartner, <b>Hall</b> , Yong, Mundy, Courtney	Understanding the impacts of Vaporised Nicotine Products on smoking in Australia	\$1,603,155
2016-2018	ARC	Linkage Project in partnership with Queensland Health	Gallagher, <b>Connor</b> , Loveday, Ballantyne	Active and interactive analysis of prescription data for harm minimisation	\$191,000 plus \$200,000 to partner Qld Health
2016	University of Sunshine Coast	SOSS Collaborative Research Grant	Wood, Scott-Parker, <b>Gullo</b>	Time for change: understanding the mechanisms of treatment effectiveness in a community intervention program through the application of a biosocial cognitive model of problematic alcohol and cannabis use	\$8,000
2015-2016	UQ Faculty of Humanities and Social Sciences	Strategic Research Funding Scheme Program (School of Education)	Mills, Carroll, Keddie, <b>Kelly</b> , Lingard, Lynch, Mackinlay, Phillips, Dobson, Tomaszewski, Westoby	Creating a more inclusive and cohesive society – educational institutions engaging with community stakeholders	\$100,000
2016-2018	NHMRC	Targeted Call for Research: preventing obesity in 18-24 year olds	Collins, Truby, Attia, Hutchesson, Burrows, Callister, <b>Hides</b> , Bonevski, Doran	Efficacy and cost effectiveness of varying levels of technology-delivered personalised feedback on dietary patterns in motivating young Australian adults to improve diet quality and eating habits: The Advice, Ideas and Motivation for My Eating study	\$592,756
2016-2017	Dept. of Veterans' Affairs	Tender	Healthcare Management Advisors Consortium, Kinkade, Gibbs, <b>Hides</b> , Kavanagh, Redback Conferencing	Services to implement a 12 month webinar/podcast pilot series targeted at mental health providers providing services to veterans	\$356,037
2016-2017	Dept Veterans' Affairs	Tender	Kavanagh, <b>Quinn</b> , Young, <b>Hides</b> , White, Stoyanov, Shakespeare-Finch, Zelenko	Evaluation of the PTSD Coach Australia mobile application	\$219,836

## CYSAR Mentorship

2017-2019	UQ Fellowship to Professor Jochen Muller	Investigating relationships between chemical exposure and human and ecosystem health outcomes	\$347,015
-----------	--	---	-----------

Professor Wayne Hall supported this successful application for a UQ Fellowship to Professor Jochen Muller at the National Research Centre for Environmental Toxicology (Entox), now incorporated in the Queensland Alliance for Environmental Health Sciences. It is an example of CYSAR's collaboration with Entox, which has been funded by the Commonwealth to do national monitoring of illicit drug use, especially methamphetamine. Six peer reviewed papers from this collaboration in 2016 included a report in the *Medical Journal of Australia*.

## Active (Continuing) in 2016

### CYSAR Led Chief Investigator

Years	Source	Type	Investigators	Title	Awarded
2014-2018	UQef The University of Queensland Endowment Fund	Philanthropical Gift	<b>Connor</b> , on behalf of CYSAR	Gift to the Centre for Youth Substance Abuse Research from Graeme Wood and Andrew Brice	\$2,000,000
2012-2016	John Fitzgerald	Gift with supporting funds from The University of Queensland	<b>Connor</b>	Mindfulness in education research collaboration: shaping the future of education: pilot study (Mindfulness meditation in schools)	\$140,000 + \$20,000 from The University of Queensland
2012-2017	NHMRC	Career Development Fellowship Level 2: Clinical	<b>Connor</b>	Revolutionising alcohol dependence treatment: targeting individual genetic and psychological risk through Clinical Decision Support Systems	\$432,568
2012-2016	ARC	Future Fellowship	<b>Hides</b>	Promoting the positive mental health and well-being of young Australians	\$599,966
2012-2016	NHMRC	Early Career Fellowship TSP2: Clinical	<b>Gullo</b>	From the laboratory to the classroom: validation of an innovative laboratory model of adolescent impulsivity and alcohol use using a school-based randomised controlled trial	\$387,660
2012-2017	NHMRC	Targeted Call for Mental Health Research	<b>Hides</b> , Kavanagh, <b>Connor</b> , Daglish, Cotton, Barendregt, Witkiewitz, Young, White	Reducing alcohol use and related harm in young people accessing emergency departments (Brief telephone interventions)	\$702,461
2013-2017	NHMRC	Targeted Call for Mental Health Research	<b>Hides</b> , Stain, Baker, Jackson, Lenroot, Paulik, McElduff, Wolfenden	Social well-being and engaged living (SWEL) intervention for Australian youth at risk of mental health and other adverse outcomes	\$1,305,235

## CYSAR Chief Investigators

Years	Source	Type	Investigators	Title	Awarded
2015-2019	NHMRC	Project	Toumbourou, <b>Kelly</b> , Rowland, Williams, Kremer, Carter, Abraham	Estimating the contribution of adolescent alcohol misuse prevention to the reduction of alcohol-related harm in Australia	\$1,789,104
2015-2018	ARC	Linkage Project	Zelenko, Light, <b>Hides</b> , Dalglish	Kids Helpline	\$341,794
2014-2016	ARC	Linkage Project	Rundle-Thiele, <b>Connor</b> , Drennan, Russell-Bennett, Leo, Percy	Advancing prevention science: application of social marketing to change the drinking culture of young Australians	\$67,792
2015-2020	ARC	Linkage Projects	Mueller, Thai, Gartner, Prichard, <b>Hall</b> , Lai, Jiang, Kirkbride, Bruno, Ort, Covaci, Carter, Lubman	Estimating per capita use and release of chemicals by wastewater analysis	\$988,798
2013-2016	ARC	Linkage Project; matching funds from Queensland Health	Gallagher, Wiles, <b>Connor</b> , Loveday, Ballantyne	The development of automated advanced data analysis techniques for the detection of aberrant patterns of prescribing controlled drugs	\$391,000
2014-2018	NHMRC	Targeted Call for Mental Health Research	Toombs, Kisely, Hayman, <b>Hides</b> , Ranmuthugala, Chennakesavan, Brennan	Indigenous Network Suicide Intervention Skills Training (INSIST): can a community designed and delivered framework reduce suicide/self-harm in Indigenous youth?	\$40,000 (total amount to project \$AUD 824,163.36)
2011-2016	Inspire Foundation and the Young and Well Cooperative Research Centre	Program Grant	<b>Hides</b> , Kavanagh, Young, Shochet, Tjondronegoro, Johnson, Drennan	Etools for Wellbeing Project, "Rays Night Out" app & Keep it Real web-based program	\$2,400,000 (\$800,000 CYSAR)



## Active (Continuing) in 2016

### CYSAR Chief Investigators

Years	Source	Type	Investigators	Title	Awarded
2012-2017	NHMRC	Centres of Research Excellence	Whiteford, Degenhardt, Pirkis, Eagar, Andrews, Head, Gunn, Mihalopoulos, <b>Hall</b> , Patton	Evidence-based mental health planning: translating evidence into policy and services	\$2,442,370
2013-2016	NHMRC	Targeted Call for Mental Health Research	Teesson, Andrews, Newton, Slade, Chapman, Allsop, <b>Hides</b> , McBride	The Climate Schools combined study: Internet-based prevention for anxiety, depression and substance use in young Australians	\$1,400,000
2013-2018	NHMRC	Targeted Call for Mental Health Research	Cotton, McGorry, Mackinnon, Herrman, Gleeson, <b>Hides</b> , Foley	Rates, patterns and predictors of long-term outcome in a treated first-episode psychosis cohort	\$1,344,905
2015-2016	ARC	Discovery Project	Najman, <b>Alati</b>	Linked lives: antisocial behaviour across three generations	\$441,400
2015-2019	NHMRC	Project	Mamun, <b>Alati</b>	Generational and developmental pathways of childhood and adolescent obesity: a three generation cohort study	\$1,232,041
2015-2017	ARC	Discovery Project	<b>Alati</b> , Williams, Najman, Mamun, Clavarino	Into the thirties: persistence and social consequences of risky drinking	\$273,200
2015-2017	Asthma Foundation of Australia	Foundation grant	Forsyth, <b>Alati</b>	Understanding asthma related mortality in ex-prisoners	\$104,500
2013-2018	NHMRC	Centre for Research Excellence in Mental Health and Substance Use	Teesson, Baker, Mills, Kay-Lambkin, Haber, Baillie, Birchwood, Spring, Brady, ( <b>Hides</b> Al)	Translating innovative prevention and treatment	\$2,499,025

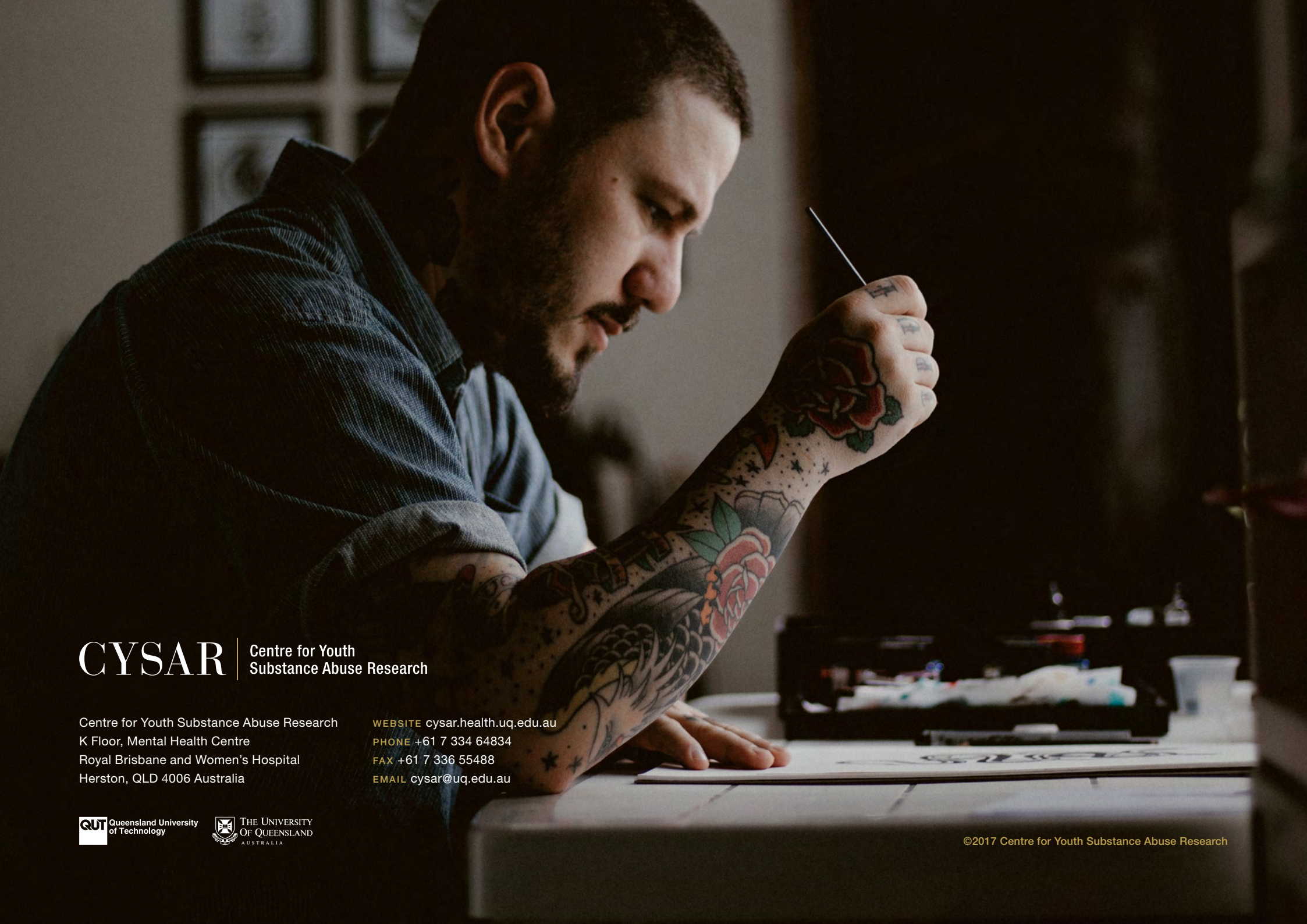
## 2016 Research Higher Degree Students: CYSAR

### Research Higher Degrees On-going

Name	Supervisors	Topic	Degree	Commenced
Ms Laura Anderson	Gullo, Dingle	Attachment and drinking refusal self-efficacy in adolescent alcohol use	1st Class Honours; enrolling PhD Jan 2017	2016
Mr Jason Coates	Connor, Gullo, Dingle	Targeting treatment in alcohol dependence	PhD	2014
Mr Daniel Demant	Hides	Substance use among lesbians, bisexuals, and gays: the influence of social identities and community attitudes	PhD	2015
Ms Nicole Guse	Gullo, Connor	Impact of ICE on the juvenile offending population	MPhil	2016
Ms Charmaine Jensen	Hall, Chan	Non-medical use of prescription stimulants by Australian university students: attitudes, prevalence, and motivation for use	PhD	2013
Mr Tim Piatkowski	Hides	Exploring the relationship between self-concept, social influences, body image, and substance use among young men within a Bruss sub-culture	PhD	2015
Ms Zoe Papinczak	Gullo, Connor, Harnett	A biosocial cognitive model of youth cannabis dependence	PhD	2016
Ms Kiri Patton	Gullo, Connor, Sheffield	Impulsivity as mechanism of risk and target for prevention in adolescent alcohol use	PhD	2014
Ms Nina Pocuca	Hides, Quinn, Mewton	Examination of personality substance use risk profiles and alcohol use trajectories from early to late adolescence	PhD	2016
Ms Annakaturah Ralph	Gullo, Connor, Harnett	The relationship between childhood trauma, attachment style, impulsivity and substance use disorders in adolescents	PhD	2016
Ms Rebekah Thomas	Kelly, Chan	Exploring socio-emotional markers and the development of emerging eating disorder throughout adolescence	PhD	2016
Ms Freya Young	Gullo, Connor, Harnett	Neuropsychologically targeted treatment approach for alcohol dependence	PhD	2017

## 2016 Other Research Higher Degree Students

Ms Megan Weier – PhD awarded October 2016, School of Psychology, Thesis title: *The problem with 'young people today': A critical and discursive exploration of Emerging Adulthood*



# CYSAR

Centre for Youth  
Substance Abuse Research

Centre for Youth Substance Abuse Research  
K Floor, Mental Health Centre  
Royal Brisbane and Women's Hospital  
Herston, QLD 4006 Australia

WEBSITE [cysar.health.uq.edu.au](http://cysar.health.uq.edu.au)

PHONE +61 7 334 64834

FAX +61 7 336 55488

EMAIL [cysar@uq.edu.au](mailto:cysar@uq.edu.au)

